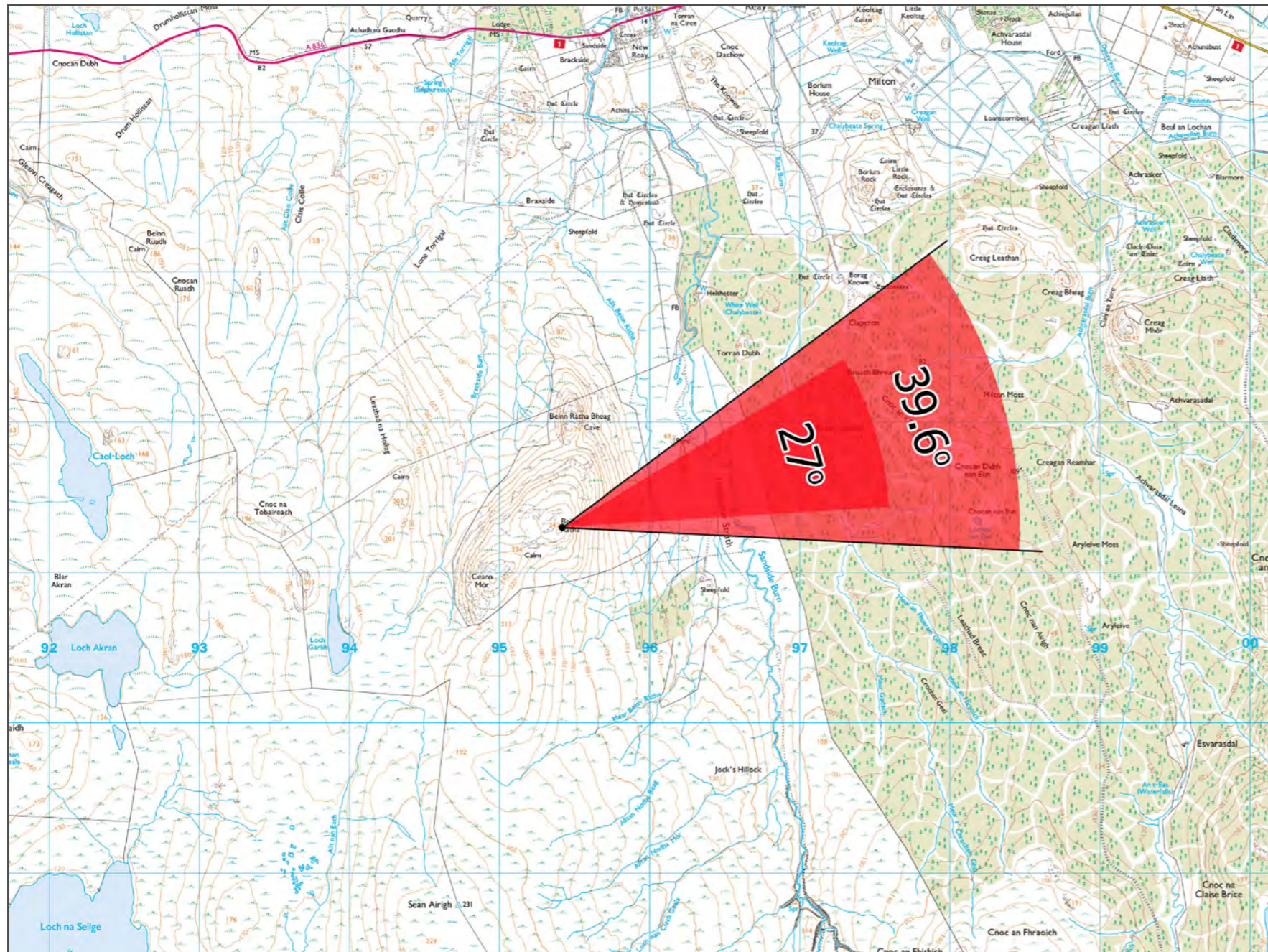


Figure 6.20g - Viewpoint 9: Summit of Beinn Ratha.



Grid Reference: 295417 961303      Distance to nearest turbine: 3450m      AOD: 241m

This viewpoint is located approximately 3.5km south of Reay.

Travelling on the A836 west from Thurso arrive at Reay. Pass the cemetery and golf course on your right and then continue past the small turning off right signposted towards Sandside Bay. Continue for approximately 250m after which the A836 starts to bend to the left. Just before it crosses over the stone walled bridge, turn left on to The Avenue. Drive towards the end and find a suitable place to park on the roadside near to Beinn Ratha Court

From this point on it is strongly recommended that the user sources designated mapping for this walk. There are several websites detailing walks to the summit of Beinn Ratha.

The camera location is on the summit at the stone cairn as shown in the adjacent photograph.

Extent of 50mm single frame image



**Figure 6.20h**  
**Viewpoint 9**  
**Summit of Beinn Ratha**

Distance to nearest turbine: 3450m      Camera: Nikon D610      Focal Length: 50mm vertical (27°) x 28mm horizontal (65.5°)      Camera height: 1.5m      Date: 12/07/2019 12:02

The images contained on this page and the following page are not representative of scale and distance from the actual viewpoint and show the wind farm development in its wider landscape context only.

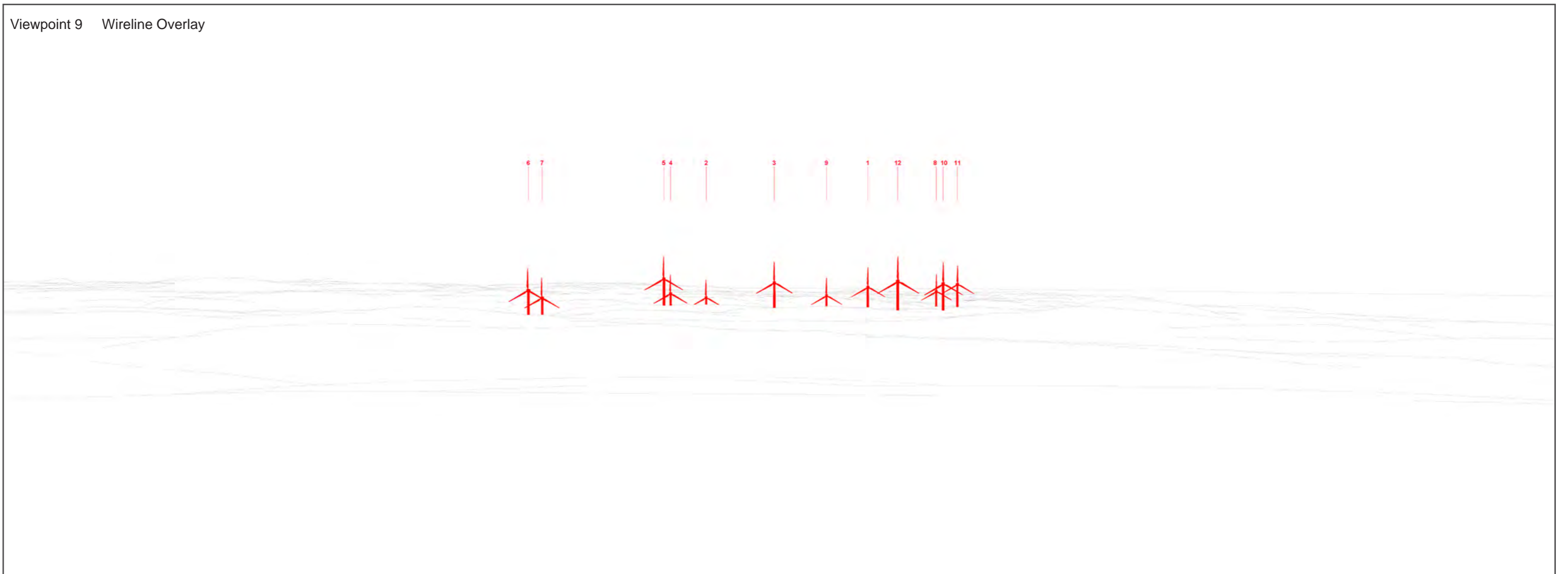
For empirical testing, the wireline image on the next page can be accurately assessed in the field when converted to a transparency. If viewed with one eye at a distance of 300mm from exactly the same location and height as the original camera lens, the image will fit the real landscape cues.

Figure 6.20i



Viewpoint 9 Existing View

Viewpoint 9 Wireline Overlay





**Viewpoint 9 (Figure 6.20j)**  
**Summit of Beinn Ratha**

Distance to nearest turbine: 3450m    Camera: Nikon D610    Focal Length: 50mm    Camera height: 1.5m    Date: 12/07/2019 12:02

This image should be viewed at a comfortable arms length (approx. 500mm)



**Viewpoint 9 (Figure 6.20k)**  
**Summit of Beinn Ratha**

Distance to nearest turbine: 3450m    Camera: Nikon D610    Focal Length: 75mm    Camera height: 1.5m    Date: 12/07/2019 12:02

This image should be viewed at a comfortable arms length (approx. 500mm)