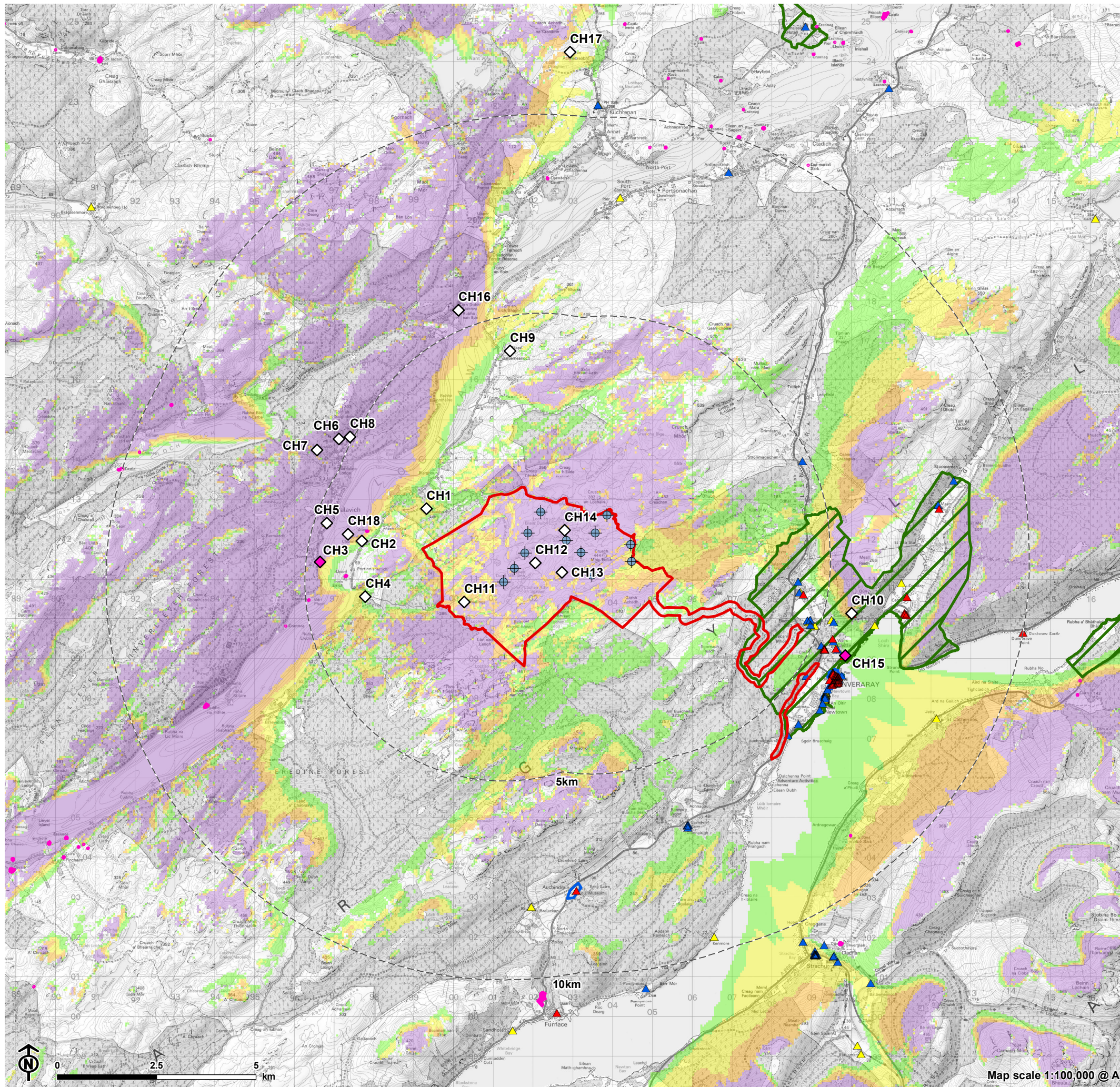


Figure 10.4: Zone of Theoretical Visibility (ZTV), Visualisation Locations, and Heritage Assets



- Site boundary
- Turbine
- 5km intervals from outermost turbines
- ▲ Category A Listed Building
- ▲ Category B Listed Building
- ▲ Category C Listed Building
- Scheduled Monument (SM)
- Conservation Area (CA)
- Garden and Designed Landscape (GDL)
- ◆ Photomontage visualisation
- Wireline visualisation only

- CH1: Ardchnonell long cairn (SM4173)
- CH2: Ardchnonell Castle/Innis Connel Castle from the wallhead (SM291)
- CH3: Ardchnonell Castle (SM291) and Innis Errich (SM4214) from New York Jetty
- CH4: Barr Mor dun (SM4159)
- CH5: Dalavich Kirk (LB11891)
- CH6: Kilmun chapel and burial ground (SM4104)
- CH7: Kilmun enclosure (SM4190)
- CH8: Kilmun enclosure (SM4189)
- CH9: Balliemanoich chapel and burial ground
- CH10: Tower, Dun Na Cuaiche, Inverary Castle Estate (LB11543)
- CH11: Allt Na h-Airigh Maldain (WoSAS 44789)
- CH12: Lochan Dubh Mhuilinn shielings (WK-3)
- CH13: Lochan Long shielings (WK-2)
- CH14: Loch an Eilein Duibh enclosures (WK-1)
- CH15: Inveraray Castle GDL (GDL00223) from Aray Bridge (LB11545)
- CH16: Carn Dubh, crannog E of Inverinan (SM4175)
- CH17: Caisteal Suidhe Cheannaidh, dun 470m NW of Achnacraobh (SM4120)
- CH18: Ardchnonell Castle (SM291)

**Theoretical blade tip visibility (180m)**

- 1-3 turbines visible
- 4-6 turbines visible
- 7-9 turbines visible
- 10-13 turbines visible

**Notes:**

The visualisations are not numbered sequentially as some have been scoped out.

The ZTV is calculated to turbine tip height (180m) from a viewing height of 2m above ground level. The terrain model assumes bare ground and is derived from OS Terrain 50 height data (obtained from Ordnance Survey in July 2019). Earth curvature and atmospheric refraction have been taken into account. The ZTV was calculated using ArcMap 10.8.1 software.