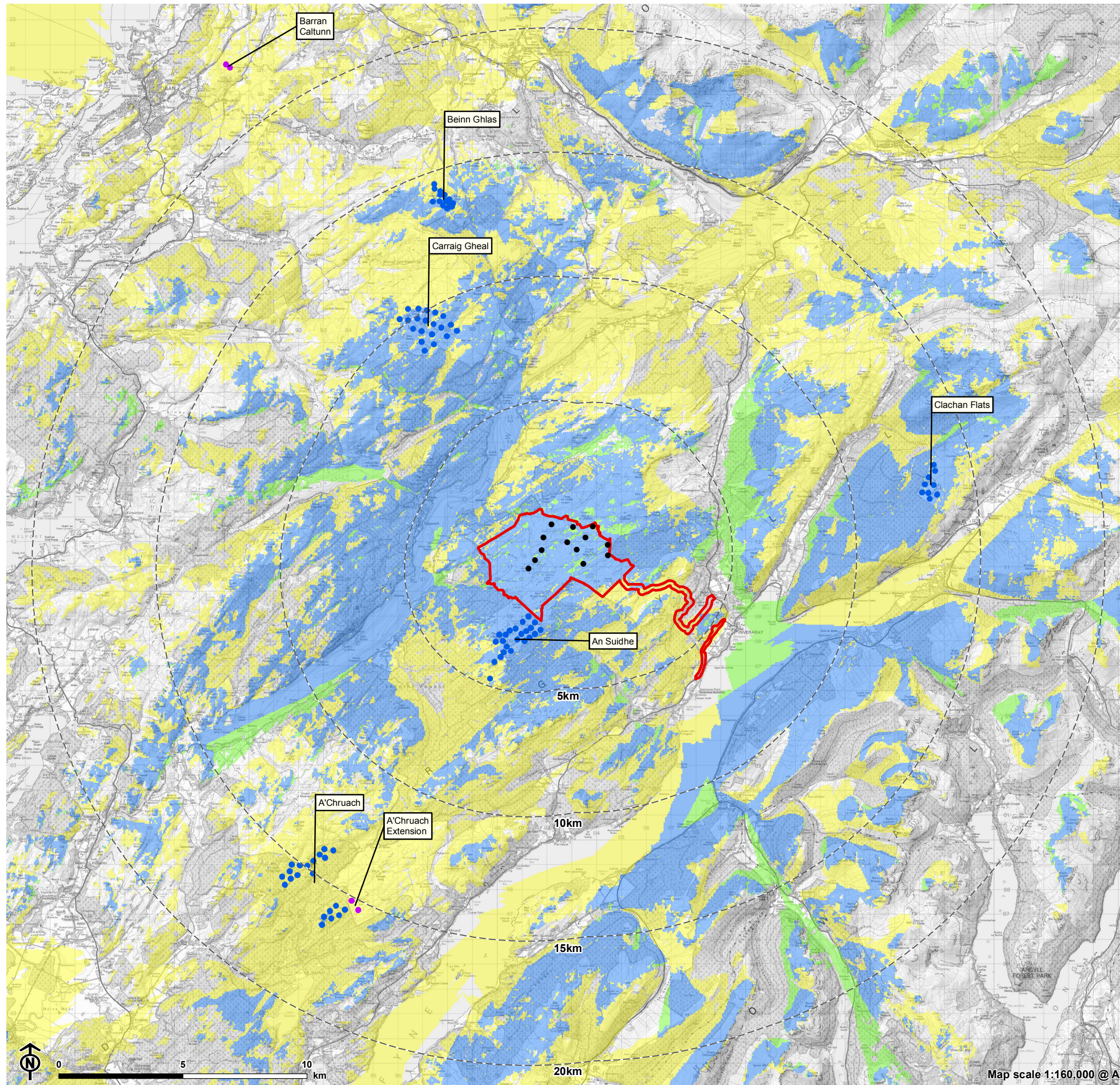


Figure 6.1.11: CZTV (Cumulative Zone of Theoretical Visibility) - Operational and Consented Wind Farms and An Carr Dubh (20 km)



- Site boundary
- Turbine
- 5km intervals from outermost turbines
- Wind farm (by status)**
- Operational
- Consented
- Only operational and consented schemes visible
- Only An Carr Dubh visible
- All schemes visible

The CZTV is calculated to turbine tip height from a viewing height of 2m above ground level. The terrain model assumes bare ground and is derived from OS Terrain 50 height data (obtained from Ordnance Survey in July 2019). Earth curvature and atmospheric refraction have been taken into account. The ZTV was calculated using ArcMap 10.8.1 software.