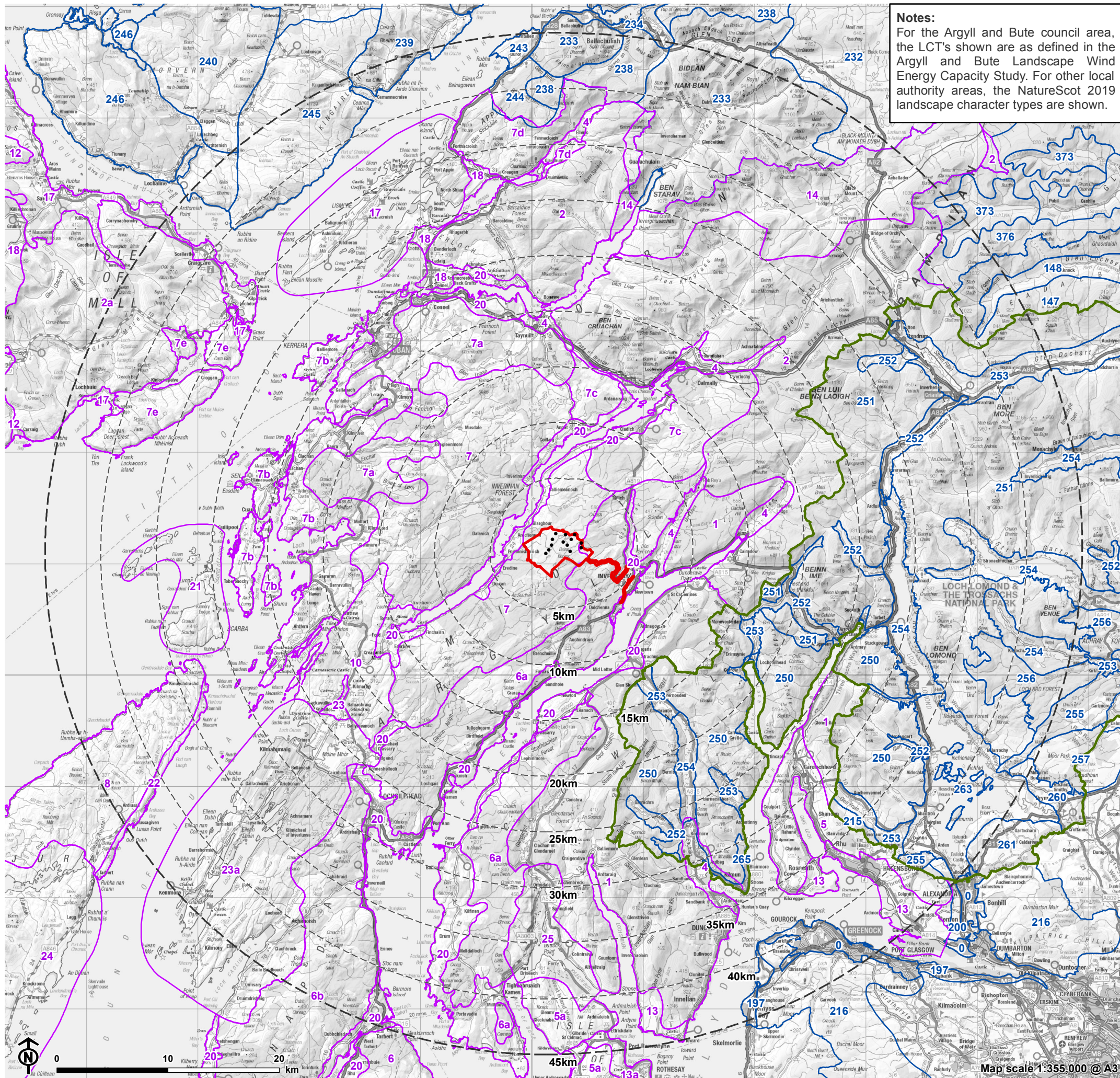


Figure 6.1.4: Landscape Character Types



Notes:
For the Argyll and Bute council area, the LCT's shown are as defined in the Argyll and Bute Landscape Wind Energy Capacity Study. For other local authority areas, the NatureScot 2019 landscape character types are shown.

- Site boundary
 - Turbine
 - 5km intervals from outermost turbines
 - 45km from outermost turbines
 - Loch Lomond and the Trossachs National Park
 - Argyll & Bute Landscape Wind Energy Capacity Study
 - NatureScot Landscape Character Type
- | | |
|---|--|
| <ul style="list-style-type: none"> 0: Urban 10: Upland Parallel Ridges 12: High Stepped Basalt 13: Rolling Farmland with Estates 13a: Bute Rolling Farmland with Estates 14: Summits and Plateaux - Central 148: Upland Glen - Central 14: Ben Nevis and Glen Coe 17: Lynn of Lorn 17: Mull Basalt Lowlands 18: Loch na Keal, Isle of Mull 18: Lowland Ridges and Moss 197: Raised Beach - Glasgow & Clyde Valley 19a: Bute Coastal Plain 1: Steep Ridgeland & Mountains 1: Steep Ridgeland and Mountains 200: Rolling Farmland - Glasgow & Clyde Valley 207: Upland River Valley - Glasgow & Clyde Valley 20: Rocky Mosaic 215: Open Ridgeland - Glasgow & Clyde Valley 216: Rugged Moorland Hills 21: Scarba, Lunga and the Garvellachs 22: Coastal Parallel Ridges 232: Boggy Moorland - Lochaber 233: Mountain Massif - Lochaber 234: Lochs with Settled Edges 238: Rugged Massif - Lochaber 23: Flat Moss and Mudflats 23a: Knapdale 240: Rugged Coastal Hills - Lochaber 243: Lowland Ridges and Moss - Lochaber 244: Craggy Upland - Lochaber 245: Plateau Moorland - Lochaber 246: Stepped Cliffs and Terraces - Lochaber 24: Jura 250: Steep Ridges and Hills 251: Highland Summits | <ul style="list-style-type: none"> 252: Upland Glens - Loch Lomond & the Trossachs 253: Straths and Glens 254: Straths and Glens with Lochs 255: Parallel Ridges - Loch Lomond & the Trossachs 256: Rolling Forested Plateau 257: Plateau Moor and Forest - Loch Lomond & the Trossachs 25: Kyles of Bute 260: River Valley Farmland and Estates 261: Rolling Farmland - Loch Lomond & the Trossachs 263: Lowland Loch Basin - Loch Lomond & the Trossachs 264: Lowland Loch Basin Islands 265: Settled Coastal Fringe 2: High Tops 2a: Mull High Tops 373: Upper Upland Glens with Lochs 376: Summits and Plateaux - Tayside 4: Mountain Glens 5: Open Ridgeland 5a: Bute Open Ridgeland 6: Upland Forest Moor Mosaic 6a: Loch Fyne Upland Forest-Moor Mosaic 6a: Loch Fyne Upland Forest-Moor Mosaic 6b: Knapdale Upland Forest Moor Mosaic 7: Craggy Upland 7a: Craggy Upland with Settled Glens 7b: Craggy Coasts & Islands 7c: North Loch Awe Craggy Upland 7d: Lorn Craggy Upland 7e: Mull Craggy Upland 8: Moorland Plateau |
|---|--|