

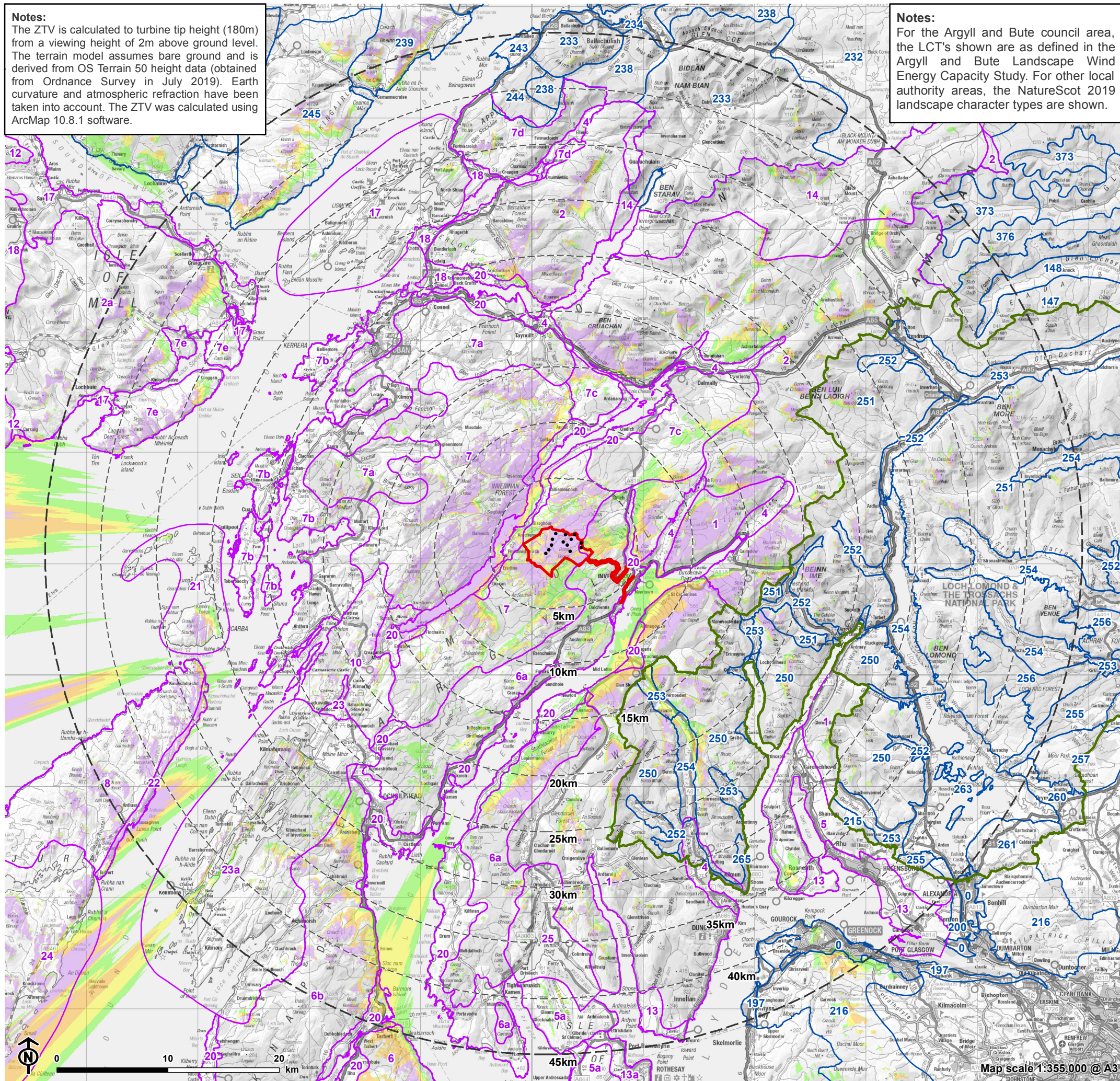
Notes:
The ZTV is calculated to turbine tip height (180m) from a viewing height of 2m above ground level. The terrain model assumes bare ground and is derived from OS Terrain 50 height data (obtained from Ordnance Survey in July 2019). Earth curvature and atmospheric refraction have been taken into account. The ZTV was calculated using ArcMap 10.8.1 software.

Notes:
For the Argyll and Bute council area, the LCT's shown are as defined in the Argyll and Bute Landscape Energy Capacity Study. For other local authority areas, the NatureScot 2019 landscape character types are shown.

An Càrr Dubh Wind Farm
for Car Duibh Wind Farm Ltd



Figure 6.1.5a: Landscape Character Types with Blade Tip Height (180m) Zone of Theoretical Visibility (ZTV)



- Site boundary
 - Turbine
 - 5km intervals from outermost turbines
 - 45km from outermost turbines
 - Loch Lomond and the Trossachs National Park
- Theoretical blade tip visibility (180m)**
- 1-3 turbines visible
 - 4-6 turbines visible
 - 7-9 turbines visible
 - 10-13 turbines visible
 - Argyll & Bute Landscape Wind Energy Capacity Study
 - NatureScot Landscape Character Type

- 0: Urban
- 10: Upland Parallel Ridges
- 12: High Stepped Basalt
- 13: Rolling Farmland with Estates
- 13a: Bute Rolling Farmland with Estates
- 14: Summits and Plateaux - Central
- 148: Upland Glen - Central
- 14: Ben Nevis and Glen Coe
- 17: Lynn of Lorn
- 17: Mull Basalt Lowlands
- 18: Loch na Keal, Isle of Mull
- 18: Lowland Ridges and Moss
- 197: Raised Beach - Glasgow & Clyde Valley
- 19a: Bute Coastal Plain
- 1: Steep Ridgeland & Mountains
- 1: Steep Ridgeland and Mountains
- 200: Rolling Farmland - Glasgow & Clyde Valley
- 20: Rocky Mosaic
- 215: Open Ridgeland - Glasgow & Clyde Valley
- 216: Rugged Moorland Hills
- 21: Scarba, Lunga and the Garvellachs
- 22: Coastal Parallel Ridges
- 232: Boggy Moorland - Lochaber
- 233: Mountain Massif - Lochaber
- 234: Lochs with Settled Edges
- 238: Rugged Massif - Lochaber
- 239: Interlocking Sweeping Peaks - Lochaber
- 23: Flat Moss and Mudflats
- 23a: Knapdale
- 240: Rugged Coastal Hills - Lochaber
- 243: Lowland Ridges and Moss - Lochaber
- 244: Craggy Upland - Lochaber
- 245: Plateau Moorland - Lochaber
- 246: Stepped Cliffs and Terraces - Lochaber
- 24: Jura
- 250: Steep Ridges and Hills
- 251: Highland Summits
- 252: Upland Glens - Loch Lomond & the Trossachs
- 253: Straths and Glens
- 254: Straths and Glens with Lochs
- 255: Parallel Ridges - Loch Lomond & the Trossachs
- 256: Rolling Forested Plateau
- 257: Plateau Moor and Forest - Loch Lomond & the Trossachs
- 25: Kyles of Bute
- 260: River Valley Farmland and Estates
- 261: Rolling Farmland - Loch Lomond & the Trossachs
- 263: Lowland Loch Basin - Loch Lomond & the Trossachs
- 264: Lowland Loch Basin Islands
- 265: Settled Coastal Fringe
- 2: High Tops
- 373: Upper Upland Glens with Lochs
- 376: Summits and Plateaux - Tayside
- 4: Mountain Glens
- 5: Open Ridgeland
- 5: Bute Open Ridgeland
- 6: Upland Forest Moor Mosaic
- 6a: Loch Fyne Upland Forest Moor Mosaic
- 6a: Loch Fyne Upland Forest-Moor Mosaic
- 6b: Knapdale Upland Forest Moor Mosaic
- 7: Craggy Upland
- 7a: Craggy Upland with Settled Glens
- 7b: Craggy Coasts & Islands
- 7c: North Loch Awe Craggy Upland
- 7d: Lorn Craggy Upland
- 7e: Mull Craggy Upland
- 8: Moorland Plateau

