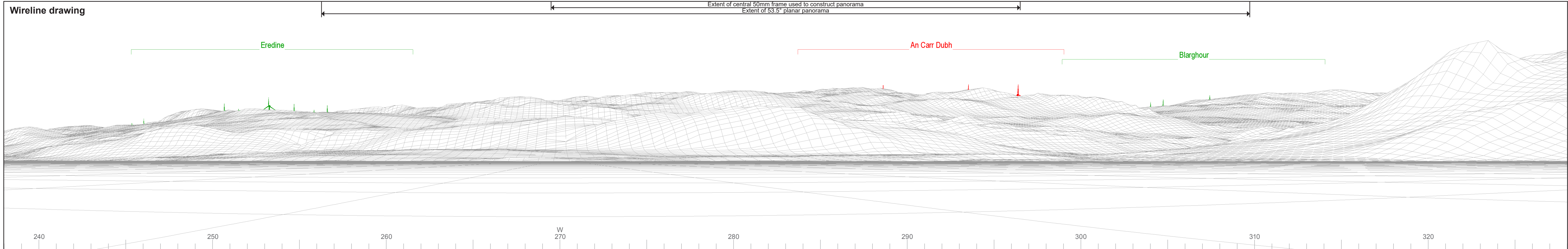


Figure 6.2.8:
Viewpoint 8 - Loch Fyne

- Site boundary
 - + Turbine
 - 5km intervals from outermost turbines
 - 45km from outermost turbines
 - o Viewpoint
- Theoretical blade tip visibility (180m)**
- 1-3 turbines visible
 - 4-6 turbines visible
 - 7-9 turbines visible
 - 10-13 turbines visible
 - ∇ 53.5° Field of View
 - ∇ 90° Field of View

The ZTV is calculated to turbine tip height (180m) from a viewing height of 2m above ground level. The terrain model assumes bare ground and is derived from OS Terrain 50 height data (obtained from Ordnance Survey in July 2019). Earth curvature and atmospheric refraction have been taken into account. The ZTV was calculated using ArcMap 10.8.1 software.



OS reference: 211310E 708460N
 AOD: 0 m
 Direction of view: 283°
 Nearest turbine: 7.45 km

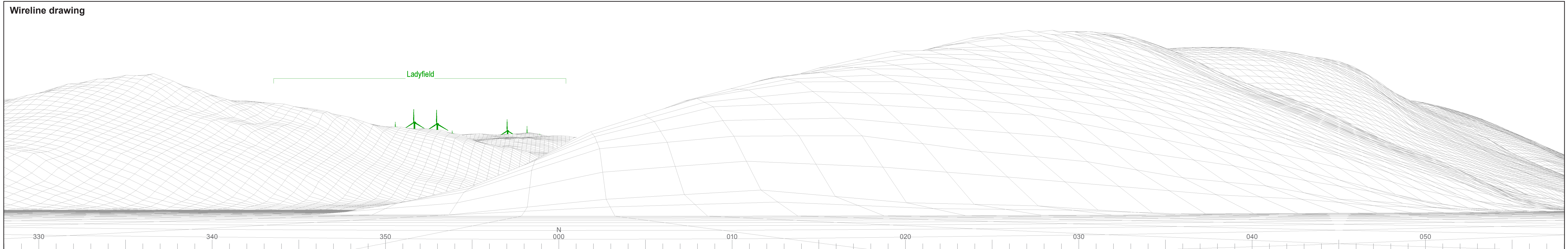
Horizontal field of view: 90° (cylindrical projection)
 Principal distance: 522 mm
 Paper size: 841 x 297 mm (half A1)
 Correct printed image size: 820 x 260 mm

Wind Farm Developments key
 (by status):

Proposed scheme Application
 Operational Scoping
 Under construction Appeal/PLI
 Consented

An Carr Dubh
Figure: 6.2.8a
 Viewpoint 8: Loch Fyne

© Crown copyright and database rights 2023. Ordnance Survey data. Licence number: 0100031673



Wireline drawing

© Crown copyright and database rights 2023. Ordnance Survey data. Licence number: 0100031073

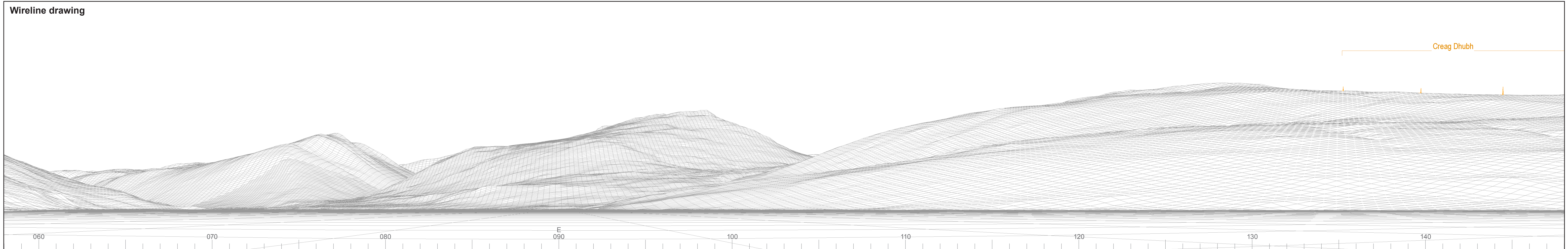


OS reference:	211310E 708460N	Horizontal field of view:	90° (cylindrical projection)
AOD:	0 m	Principal distance:	522 mm
Direction of view:	13°	Paper size:	841 x 297 mm (half A1)
Nearest turbine:	7.45 km	Correct printed image size:	820 x 260 mm

Wind Farm Developments key
(by status):

Proposed scheme	Application
Operational	Scoping
Under construction	Appeal/PLI
Consented	

An Carr Dubh
Figure: 6.2.8b
Viewpoint 8: Loch Fyne



Wireline drawing

Creag Dhubh

© Crown copyright and database rights 2023. Ordnance Survey data. Licence number: 0100031073



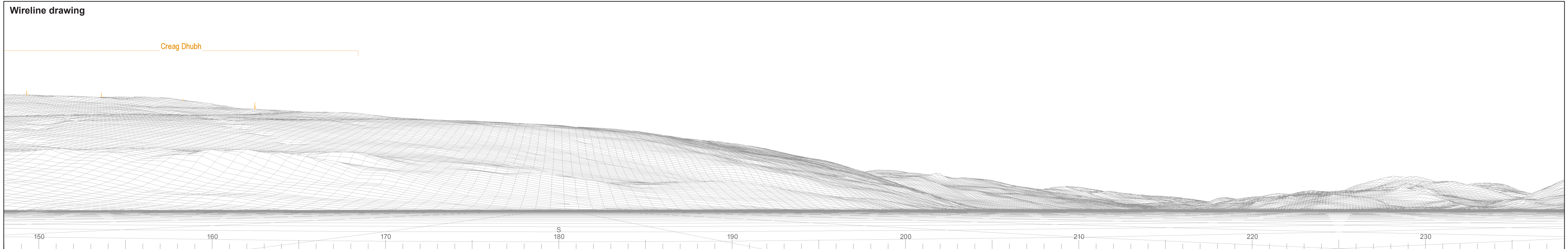
OS reference: 211310E 708460N
 AOD: 0 m
 Direction of view: 103°
 Nearest turbine: 7.45 km

Horizontal field of view: 90° (cylindrical projection)
 Principal distance: 522 mm
 Paper size: 841 x 297 mm (half A1)
 Correct printed image size: 820 x 260 mm

Wind Farm Developments key
 (by status):

- Proposed scheme Application
- Operational Scoping
- Under construction Appeal/PLI
- Consented

An Carr Dubh
Figure: 6.2.8c
Viewpoint 8: Loch Fyne



Wireline drawing

© Crown copyright and database rights 2023. Ordnance Survey data. Licence number: 0100031073

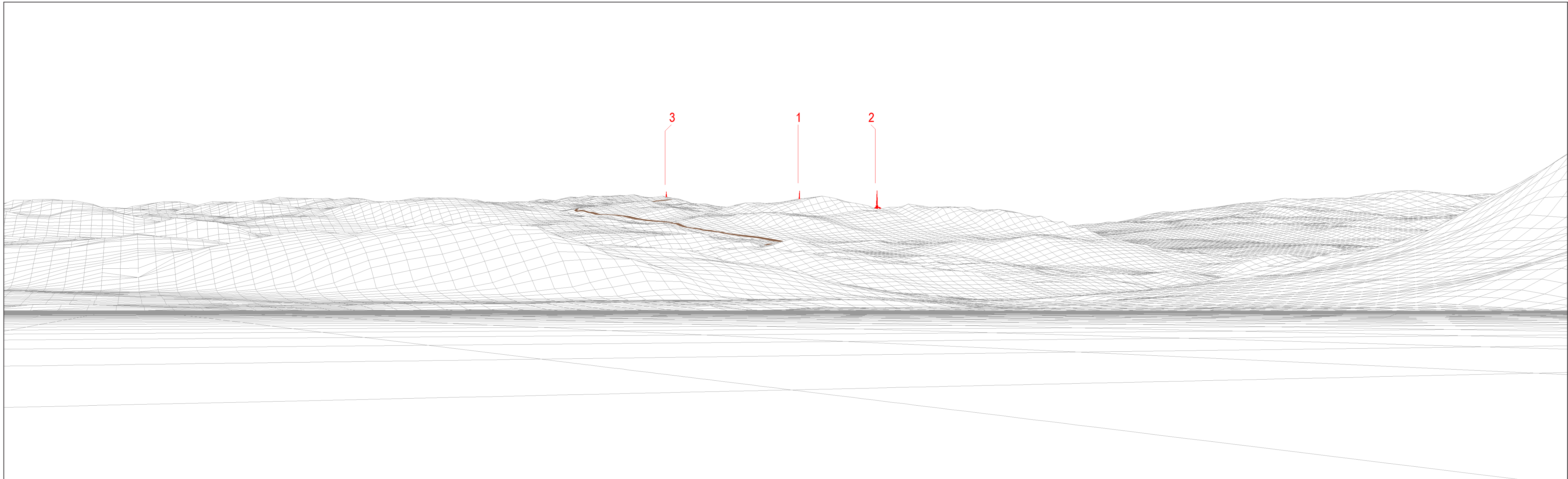


OS reference:	211310E 708460N	Horizontal field of view:	90° (cylindrical projection)
AOD:	0 m	Principal distance:	522 mm
Direction of view:	193°	Paper size:	841 x 297 mm (half A1)
Nearest turbine:	7.45 km	Correct printed image size:	820 x 260 mm

Wind Farm Developments key
(by status):

Proposed scheme	Application
Operational	Scoping
Under construction	Appeal/PLI
Consented	

An Carr Dubh
Figure: 6.2.8d
Viewpoint 8: Loch Fyne



Wireline drawing

View flat at a comfortable arm's length



OS reference: 211310E 708460N
 AOD: 0 m
 Direction of view: 293°
 Nearest turbine: 7.45 km

Horizontal field of view: 90° (cylindrical projection)
 Principal distance: 522 mm
 Paper size: 841 x 297 mm (half A1)
 Correct printed image size: 820 x 260 mm

Wind Farm Developments key
 (by status):

Proposed scheme
 Operational

An Cár Dubh
Figure: 6.2.8e
 Viewpoint 8: Loch Fyne

© Crown copyright and database rights 2023 Ordnance Survey data Licence number: 0100051673