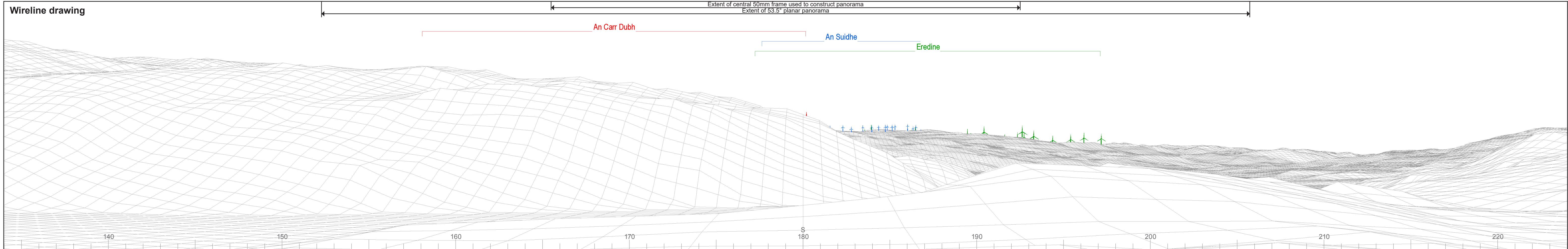


Figure 6.2.28: Viewpoint 28 - Road summit view travelling SW on minor road to west of Loch Awe

- Site boundary
- Turbine
- 5km intervals from outermost turbines
- 45km intervals from outermost turbines
- Viewpoint
- Theoretical blade tip visibility (180m)**
- 1-3 turbines visible
- 4-6 turbines visible
- 7-9 turbines visible
- 10-13 turbines visible
- 53.5° Field of View
- 90° Field of View

The ZTV is calculated to turbine tip height (180m) from a viewing height of 2m above ground level. The terrain model assumes bare ground and is derived from OS Terrain 50 height data (obtained from Ordnance Survey in July 2019). Earth curvature and atmospheric refraction have been taken into account. The ZTV was calculated using ArcMap 10.8.1 software.



Wireline drawing

Extent of central 50mm frame used to construct panorama
Extent of 53.5° planar panorama

An Carr Dubh

An Suidhe

Eredine

140 150 160 170 180 190 200 210 220



OS reference: 201300E 719720N
AOD: 73.1 m
Direction of view: 179°
Nearest turbine: 7.10 km

Horizontal field of view: 90° (cylindrical projection)
Principal distance: 522 mm
Paper size: 841 x 297 mm (half A1)
Correct printed image size: 820 x 260 mm

Wind Farm Developments key
(by status):

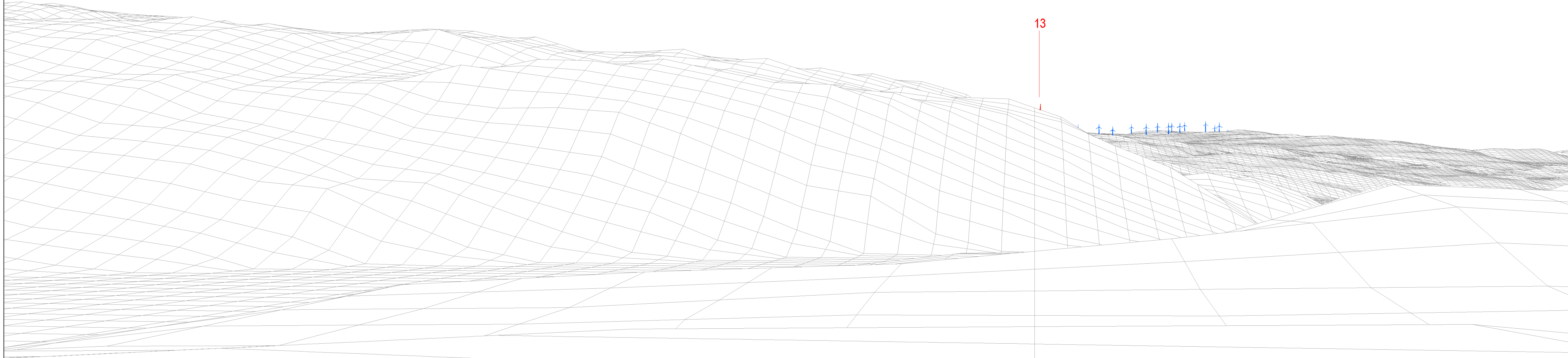
Proposed scheme	Application
Operational	Scoping
Under construction	Appeal/PLI
Consented	

Viewpoint 28: Road summit view travelling SW on minor road to west of Loch Awe

An Carr Dubh
Figure: 6.2.28a

© Crown copyright and database rights 2023. Ordnance Survey data. Licence number: 0100031073

© Crown copyright and database rights 2023 Ordnance Survey data. Licence number: 0100051673



Wireline drawing

View flat at a comfortable arm's length



OS reference:	201300E 719720N	Horizontal field of view:	90° (cylindrical projection)
AOD:	73.1 m	Principal distance:	522 mm
Direction of view:	179°	Paper size:	841 x 297 mm (half A1)
Nearest turbine:	7.10 km	Correct printed image size:	820 x 260 mm

Wind Farm Developments key
 (by status):
Proposed scheme
Operational

An Cár Dubh
Figure: 6.2.28b
Viewpoint 28: Road summit view travelling SW on minor road to west of Loch Awe