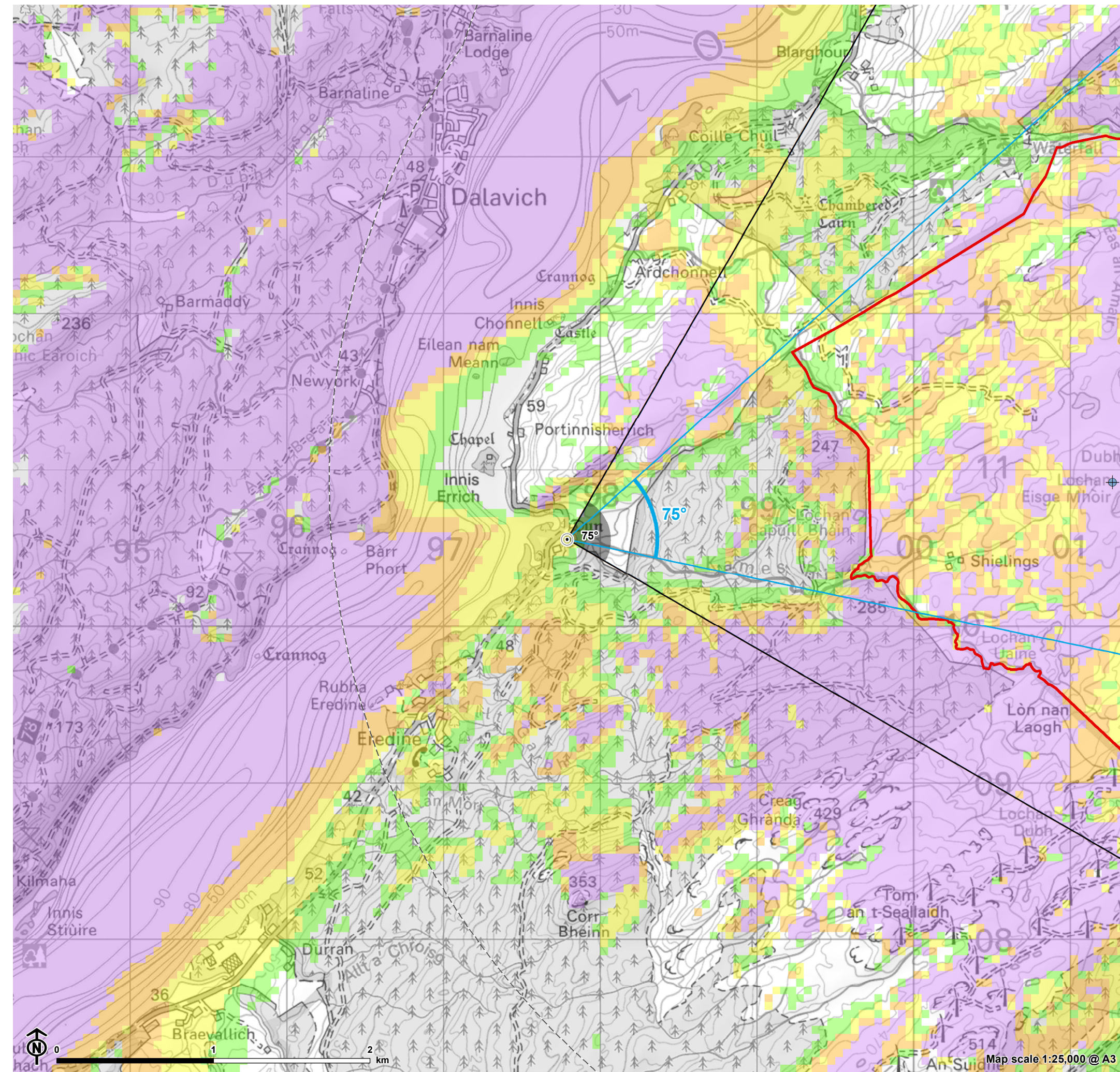
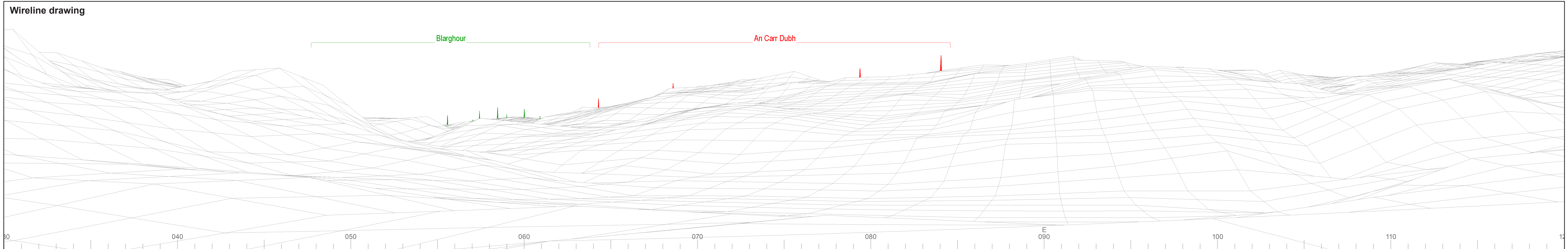


Figure 10.5.4:
Viewpoint CH4 - Barr Mor dun (SM4159)



- Site boundary
 - + Turbine layout
 - 5km intervals from outermost turbines
 - 45km from outermost turbines
 - o Viewpoint
- Theoretical blade tip visibility (180m)**
- 1-3 turbines visible
 - 4-6 turbines visible
 - 7-9 turbines visible
 - 10-13 turbines visible
 - ∠ 53.5° Field of View
 - ∠ 90° Field of View

The ZTV is calculated to turbine tip height (180m) from a viewing height of 2m above ground level. The terrain model assumes bare ground and is derived from OS Terrain 50 height data (obtained from Ordnance Survey in July 2019). Earth curvature and atmospheric refraction have been taken into account. The ZTV was calculated using ArcMap 10.8.1 software.



© Crown copyright and database rights 2023. Ordnance Survey data. Licence number: 0100031673

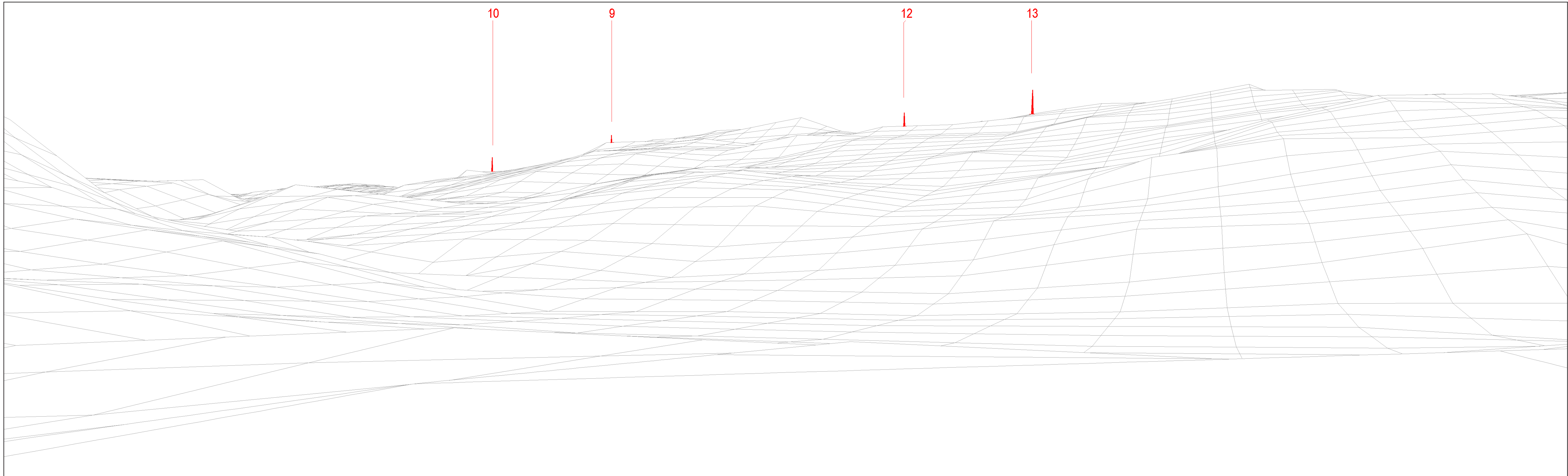


OS reference:	197790E 710556N	Horizontal field of view:	90° (cylindrical projection)
AOD:	50.89 m	Principal distance:	522 mm
Direction of view:	75°	Paper size:	841 x 297 mm (half A1)
Nearest turbine:	3.5 km	Correct printed image size:	820 x 260 mm

Wind Farm Developments key
(by status):

Proposed scheme	Application
Operational	Scoping
Under construction	Appeal/PLI
Consented	

An Càrr Dubh Wind Farm
Figure: CH4a
CHVP04: Barr Mor dun (SM4159)



Wireline drawing

View flat at a comfortable arm's length



OS reference:	197790E 710556N	Horizontal field of view:	53.5° (planar projection)
AOD:	50.89 m	Principal distance:	812.5 mm
Direction of view:	75°	Paper size:	841 x 297 mm (half A1)
Nearest turbine:	3.5 km	Correct printed image size:	820 x 260 mm

Wind Farm Developments key
(by status):

Proposed scheme
Operational

An Càrr Dubh Wind Farm
Figure: CH4b
CHVP04: Barr Mor dun (SM4159)

© Crown copyright and database rights 2023 Ordnance Survey data. Licence number: 0100051673