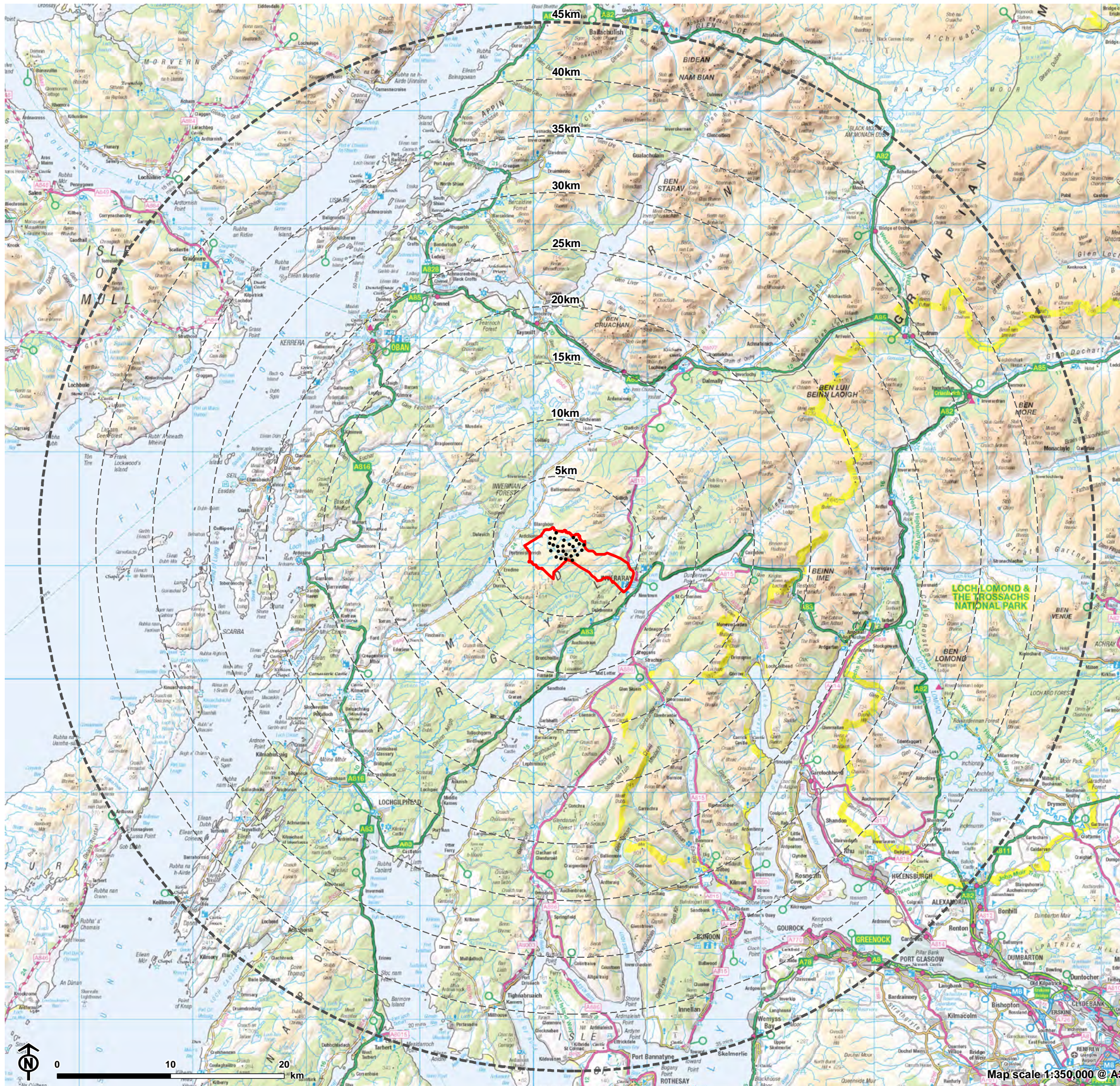


Figure 5.1: LVIA Study Area





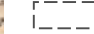

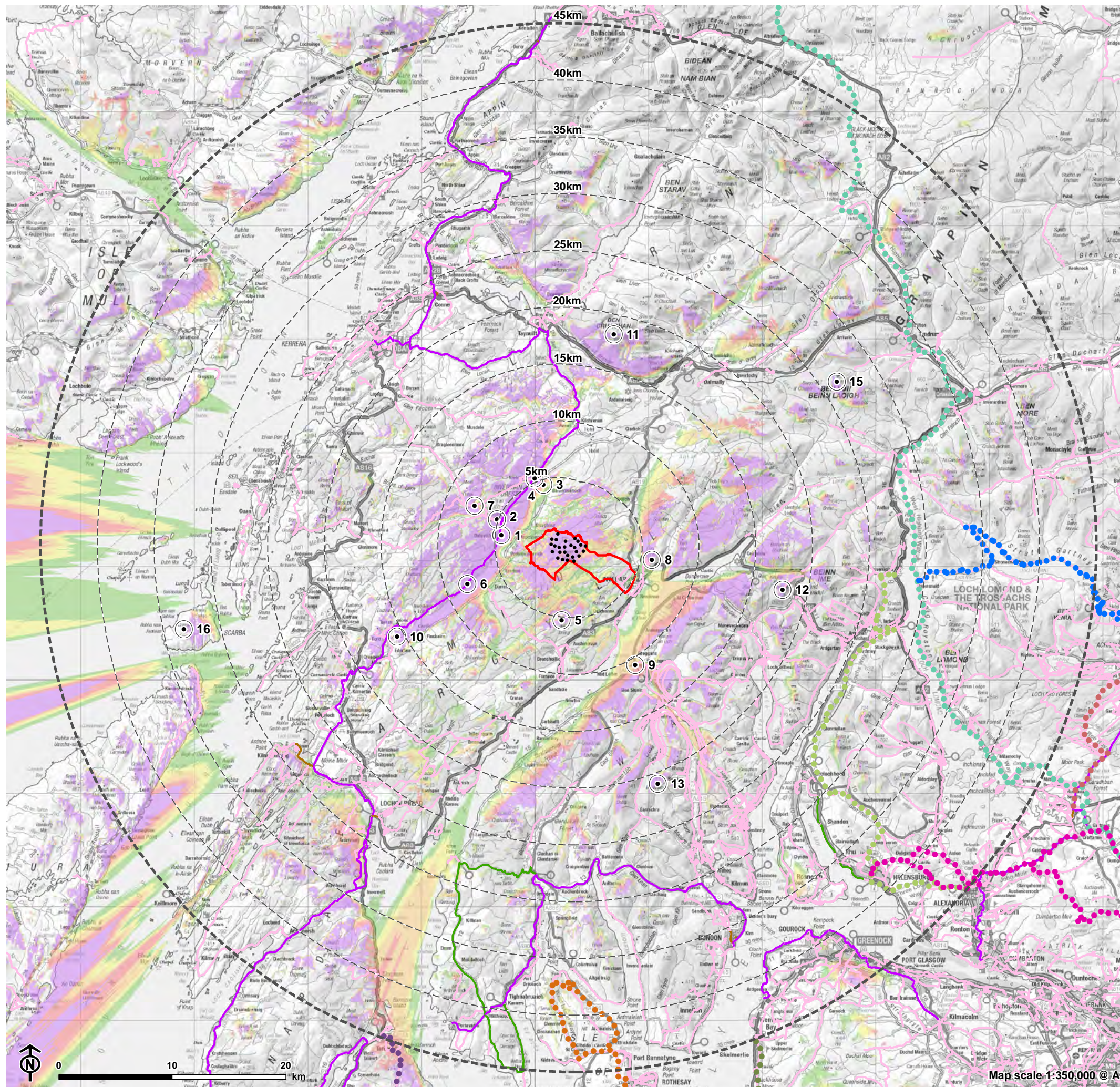
-  Site boundary
-  Turbine Layout (Scoping)
-  5km intervals from outermost turbine
-  45km from outermost turbine

Figure 5.2: ZTV tip height (200m) with Visual Receptors



- Site boundary
- Turbine Layout (Scoping)
- 5km intervals from outermost turbine
- 45km from outermost turbine

Recreational routes

- National Cycle Network (NCN)
- NCN Link
- Regional Cycle Network
- James Muir Way
- The Great Trossachs Path
- Ayrshire Coastal Path
- Kintyre Way
- Rob Roy Way
- Three Lochs Way
- West Highland Way
- West Island Way
- Core path

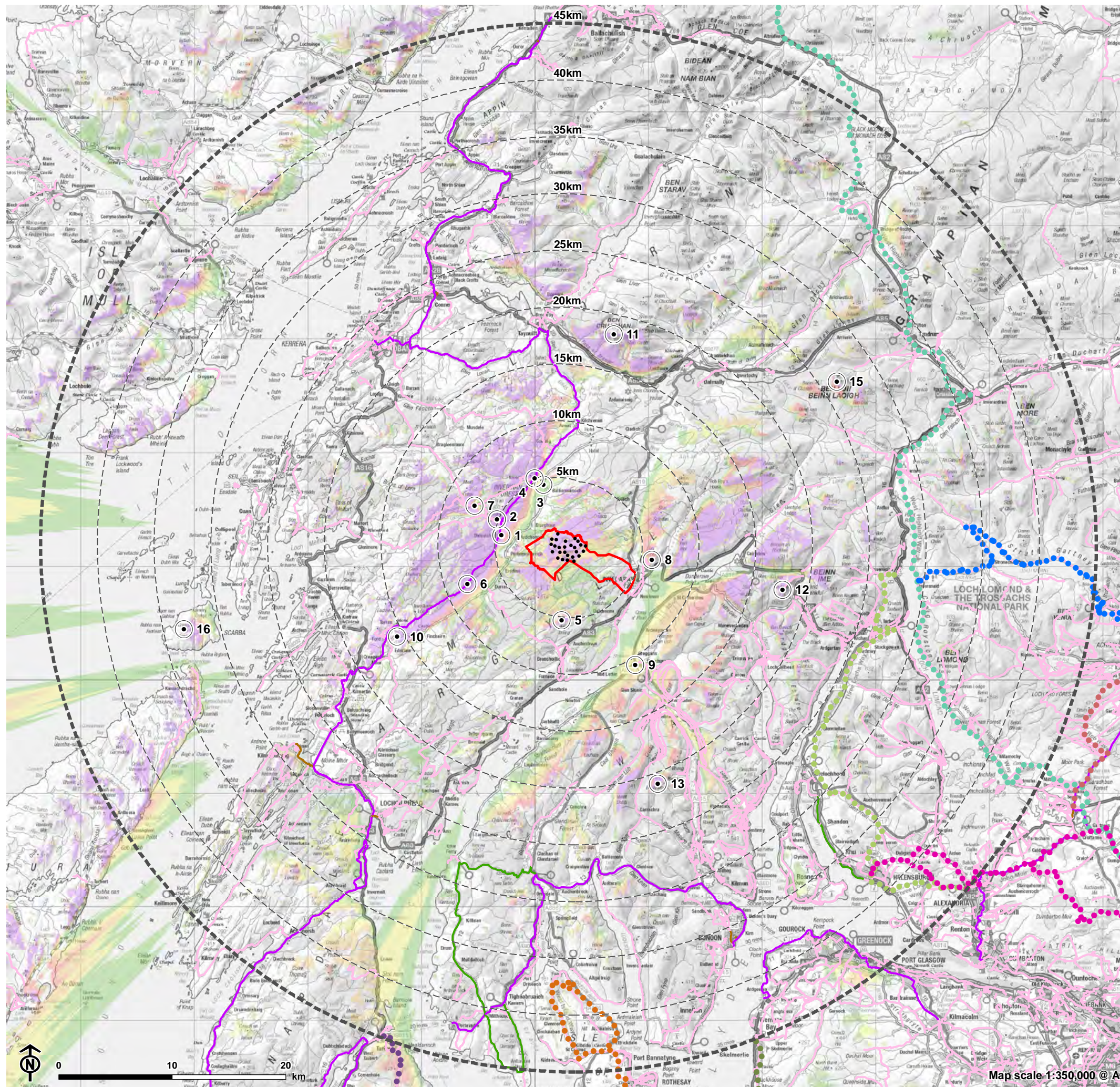
- Viewpoint
- 1: Dalavich Jetty
- 2: Loch Avich Road, north of Dalavich
- 3: B840, north of Balliemeanoch
- 4: Inverinan
- 5: Beinn Dearg
- 6: Kilmaha Viewpoint
- 7: Loch Avich, east of Loch Avich House
- 8: Dùn Còrr-Bhile (322m)
- 9: A886 at Strachur
- 10: B840, East of Ford
- 11: Ben Cruachan (1126m)
- 12: Beinn an Lochain hilltop (901m) (LLTNP)
- 13: Beinn Mhor (Cowl Peninsula and LLTNP)
- 15: Ben Lui hilltop (1130m) (LLTNP)
- 16: Cruach Scarba

Theoretical turbine visibility (200m)

- 1-6 turbines visible
- 7-11 turbines visible
- 12-16 turbines visible
- 17-21 turbines visible
- 22-26 turbines visible

The ZTV is calculated to turbine tip height (200m) from a viewing height of 2m above ground level. The terrain model assumes bare ground and is derived from OS Terrain 50 height data (obtained from Ordnance Survey in July 2019). Earth curvature and atmospheric refraction have been taken into account. The ZTV was calculated using ArcMap 10.5.1 software.

Figure 5.3: ZTV hub height (132m) with Visual Receptors



- Site boundary
- Turbine Layout (Scoping)
- 5km intervals from outermost turbine
- 45km from outermost turbine

Recreation

- National Cycle Network (NCN)
- NCN Link
- Regional Cycle Network
- John Muir Way
- The Great Trossachs Path
- Ayrshire Coastal Path
- Kintyre Way
- Rob Roy Way
- Three Lochs Way
- West Highland Way
- West Island Way
- Core path

Viewpoint

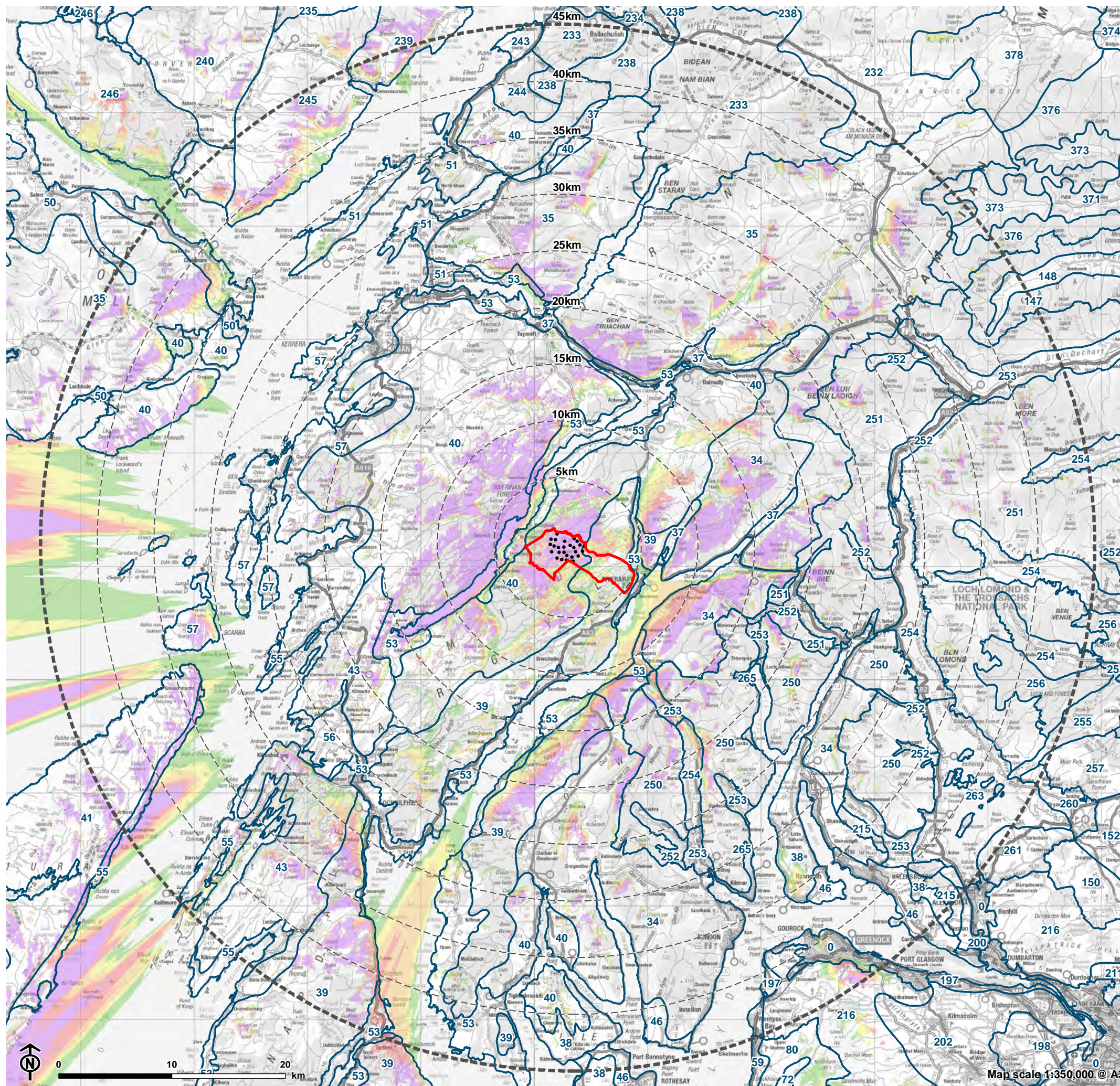
- Viewpoint
- 1: Dalavich Jetty
- 2: Loch Avich Road, north of Dalavich
- 3: B840, north of Balliemeanoch
- 4: Inverinan
- 5: Beinn Dearg
- 6: Kilmaha Viewpoint
- 7: Loch Avich, east of Loch Avich House
- 8: Dùn Còrr-Bhile (322m)
- 9: A886 at Strachur
- 10: B840, East of Ford
- 11: Ben Cruachan (1126m)
- 12: Beinn an Lochain hilltop (901m) (LLTNP)
- 13: Beinn Mhor (Cowl Peninsula and LLTNP)
- 15: Ben Lui hilltop (1130m) (LLTNP)
- 16: Cruach Scarba

Theoretical turbine visibility (132m)

- 1-6 turbines visible
- 7-11 turbines visible
- 12-16 turbines visible
- 17-21 turbines visible
- 22-26 turbines visible

The ZTV is calculated to an indicative hub height (132m) from a viewing height of 2m above ground level. The terrain model assumes bare ground and is derived from OS Terrain 50 height data (obtained from Ordnance Survey in July 2019). Earth curvature and atmospheric refraction have been taken into account. The ZTV was calculated using ArcMap 10.5.1 software.

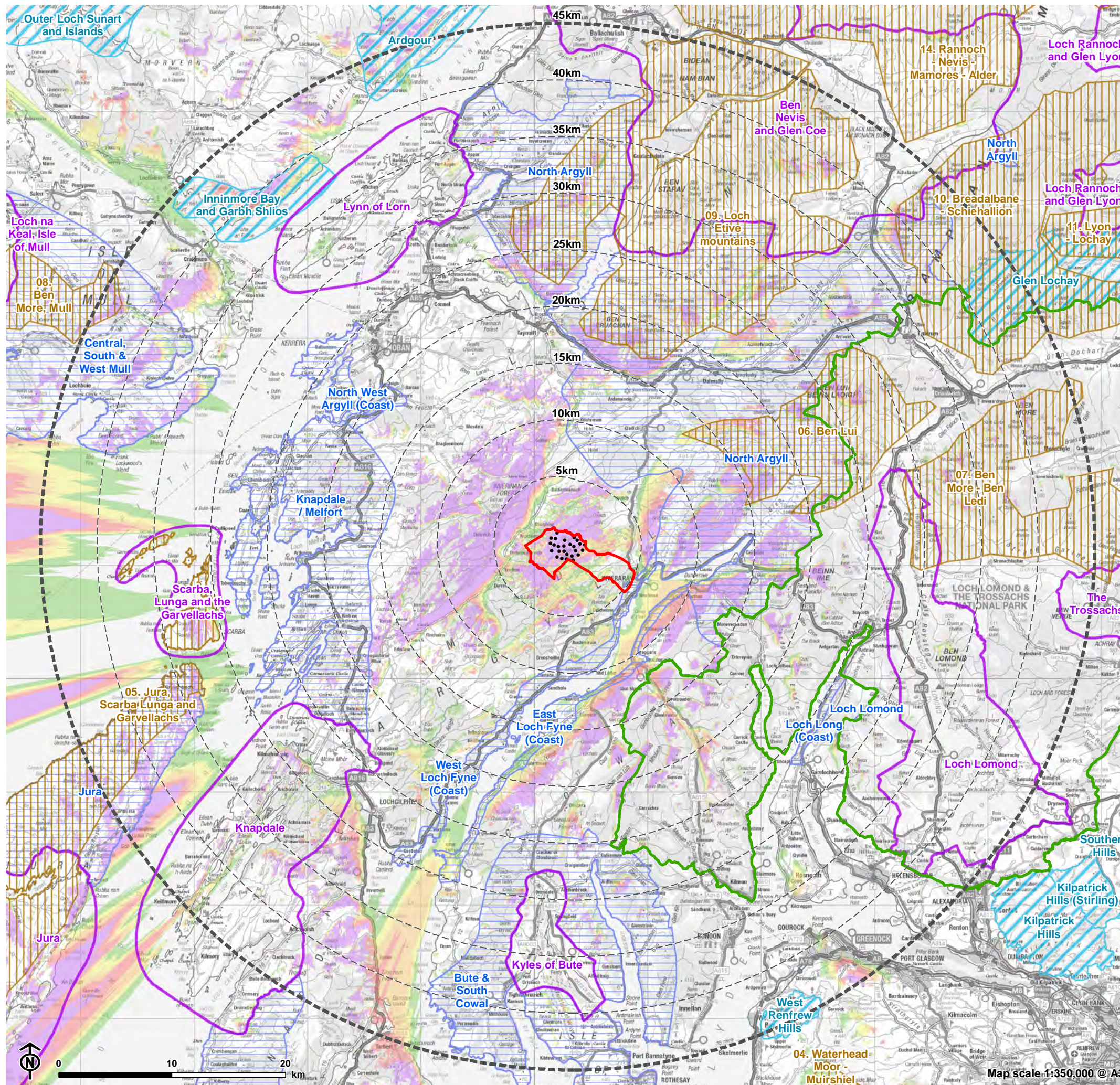
Figure 5.4: ZTV tip height (200m) with Landscape Character Types



- Site boundary
 - 5km intervals from outermost turbine
 - 45km from outermost turbine
 - Turbine Layout (Scoping)
 - Landscape Character Type
- Theoretical turbine visibility (200m)**
- 1-6 turbines visible
 - 7-11 turbines visible
 - 12-16 turbines visible
 - 17-21 turbines visible
 - 22-26 turbines visible

The ZTV is calculated to turbine tip height (200m) from a viewing height of 2m above ground level. The terrain model assumes bare ground and is derived from OS Terrain 50 height data (obtained from Ordnance Survey in July 2019). Earth curvature and atmospheric refraction have been taken into account. The ZTV was calculated using ArcMap 10.5.1 software.

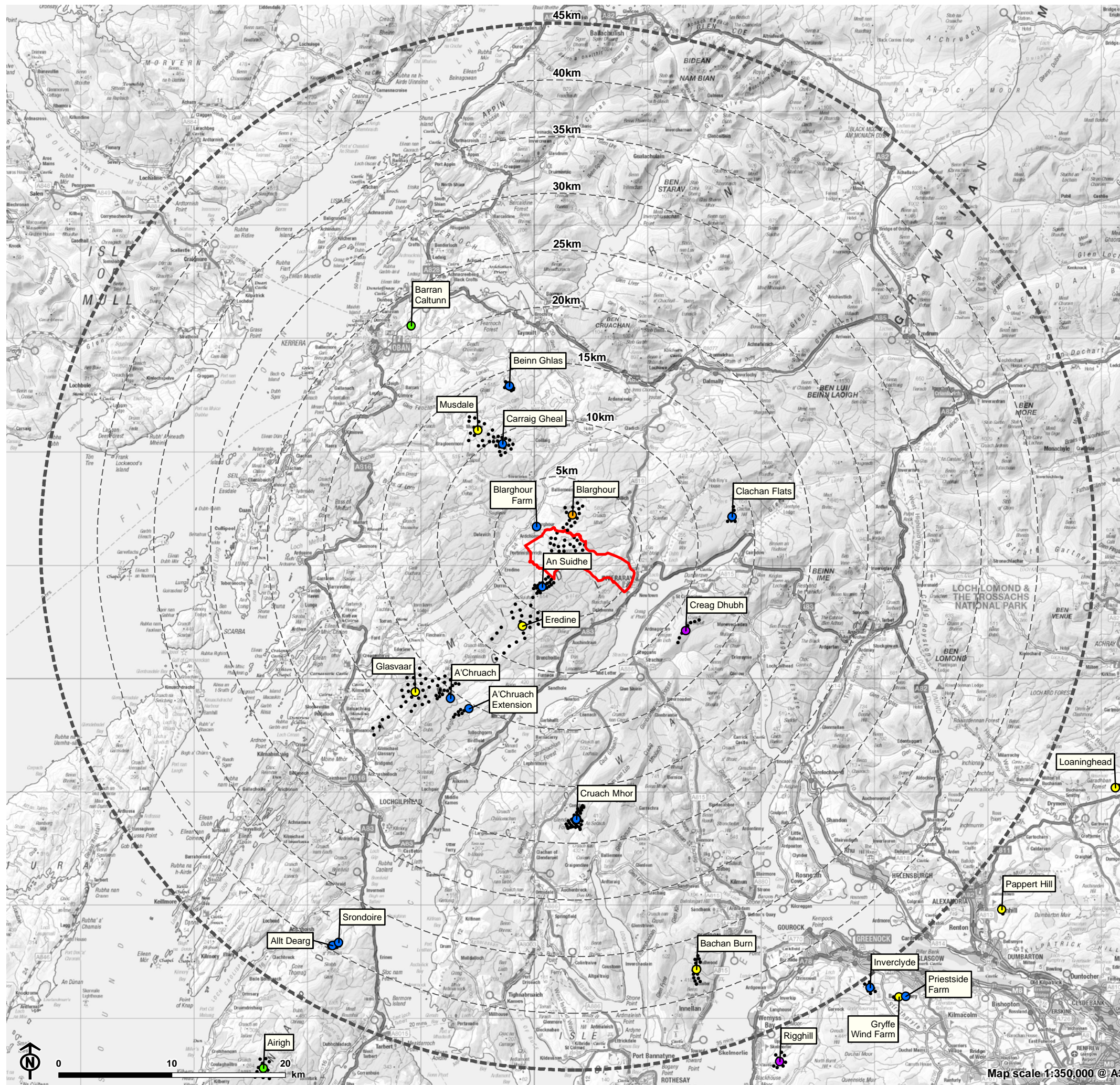
Figure 5.5: ZTV tip height (200m) with Landscape Designations



- Site boundary
 - Turbine Layout (Scoping)
 - 5km intervals from outermost turbine
 - 45km from outermost turbine
 - Special Landscape Area
 - National Scenic Area
 - Wild land
 - Area of Panoramic Quality
 - Loch Lomond and the Trossachs National Park
- Theoretical turbine visibility (200m)**
- 1-6 turbines visible
 - 7-11 turbines visible
 - 12-16 turbines visible
 - 17-21 turbines visible
 - 22-26 turbines visible

The ZTV is calculated to turbine tip height (200m) from a viewing height of 2m above ground level. The terrain model assumes bare ground and is derived from OS Terrain 50 height data (obtained from Ordnance Survey in July 2019). Earth curvature and atmospheric refraction have been taken into account. The ZTV was calculated using ArcMap 10.5.1 software.

Figure 5.6: Wind Farm Developments within 45km



- Site boundary
- Turbine layout
- 5km intervals from outermost Car Duibh turbine
- 45km from outermost Car Duibh turbine
- Wind farm status**
- Operational
- Under Construction
- Consented
- Appeal/Public Inquiry
- Application Submitted
- Design/Scoping

Wind farms shown on this map are based on information available to LUC as of 07/01/2021.

The following schemes are to be scoped out of the cumulative LVIA:

1. Turbines with a tip height of less than 50m
2. Single turbines situated 5km beyond the site boundary