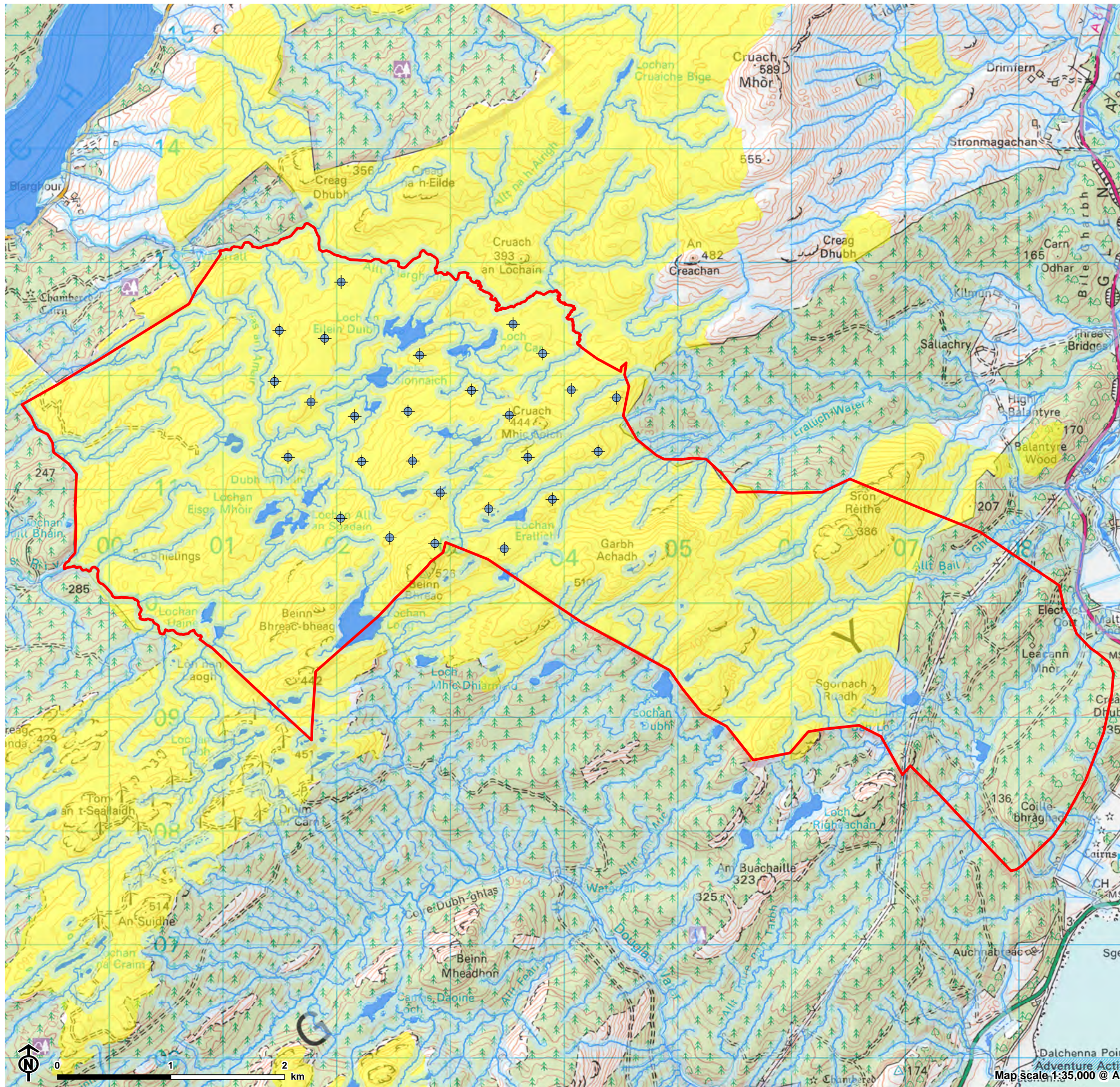
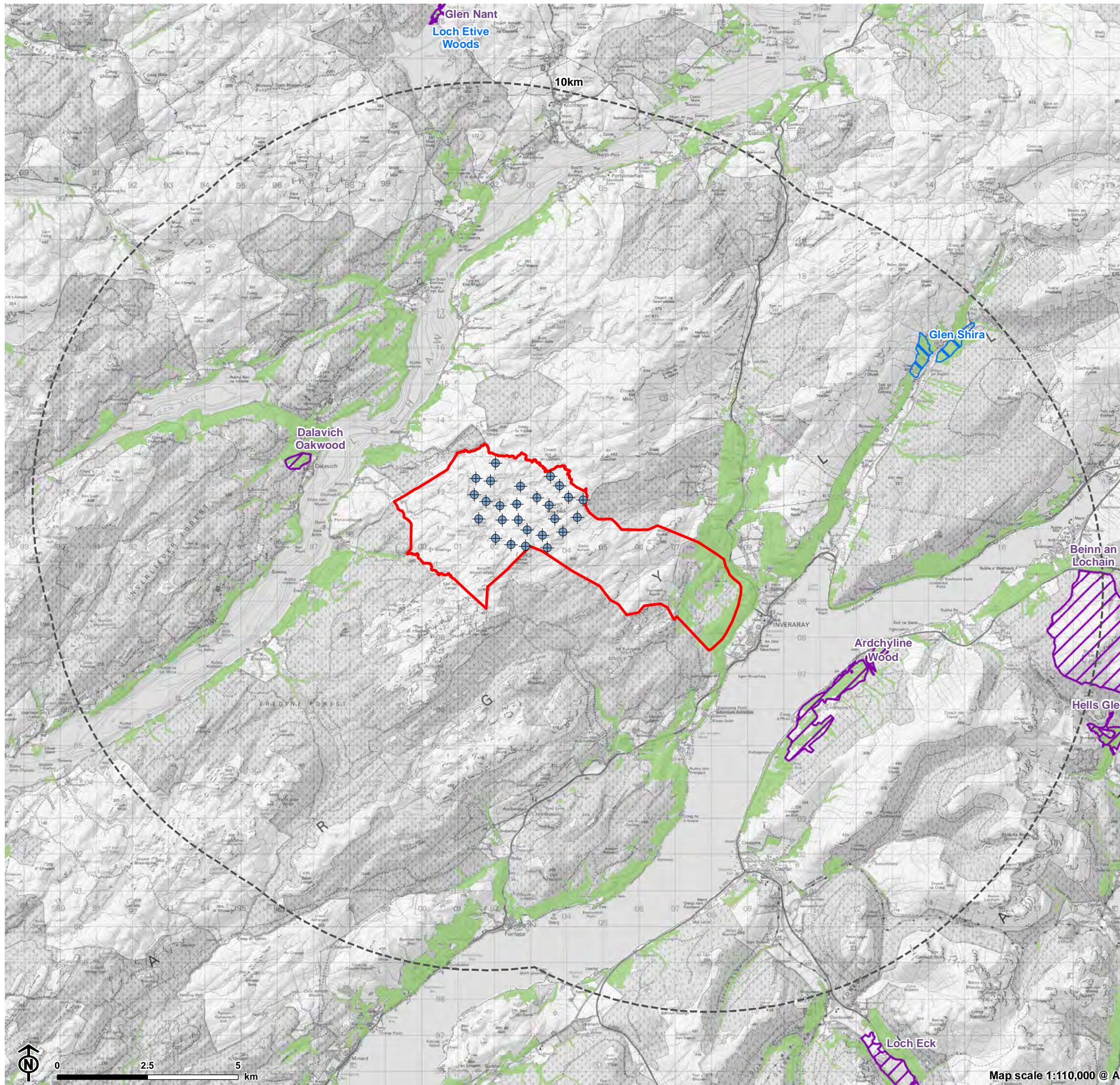


Figure 6.1: Hydrology and Peat Features



- Site boundary
- Turbine Layout (Scoping)
- Watercourse
- Waterbody
- 50m buffer of waterbodies and watercourses
- SNH Peat and Carbon Rich Soil (2016)**
- CLASS 2: Nationally important carbon-rich soils, deep peat and priority peatland habitat

Figure 7.1: Ecological Designated Sites

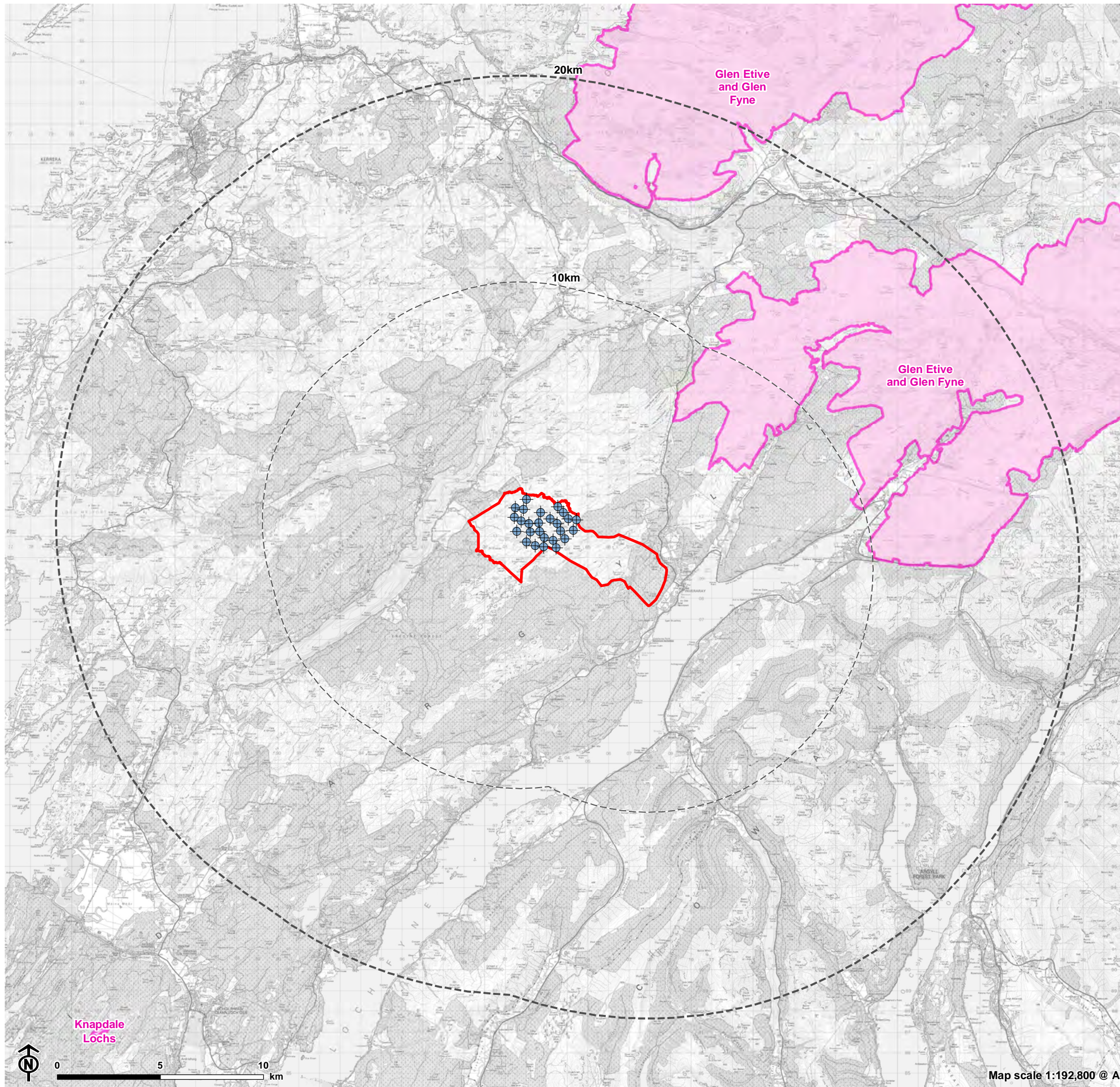


- Site boundary
- + Turbine Layout (Scoping)
- 10km from site boundary
- Statutory sites**
- Site of Special Scientific Interest (SSSI)
- Special Area of Conservation (SAC)
- Non-statutory sites**
- Ancient Woodland Inventory (AWI)



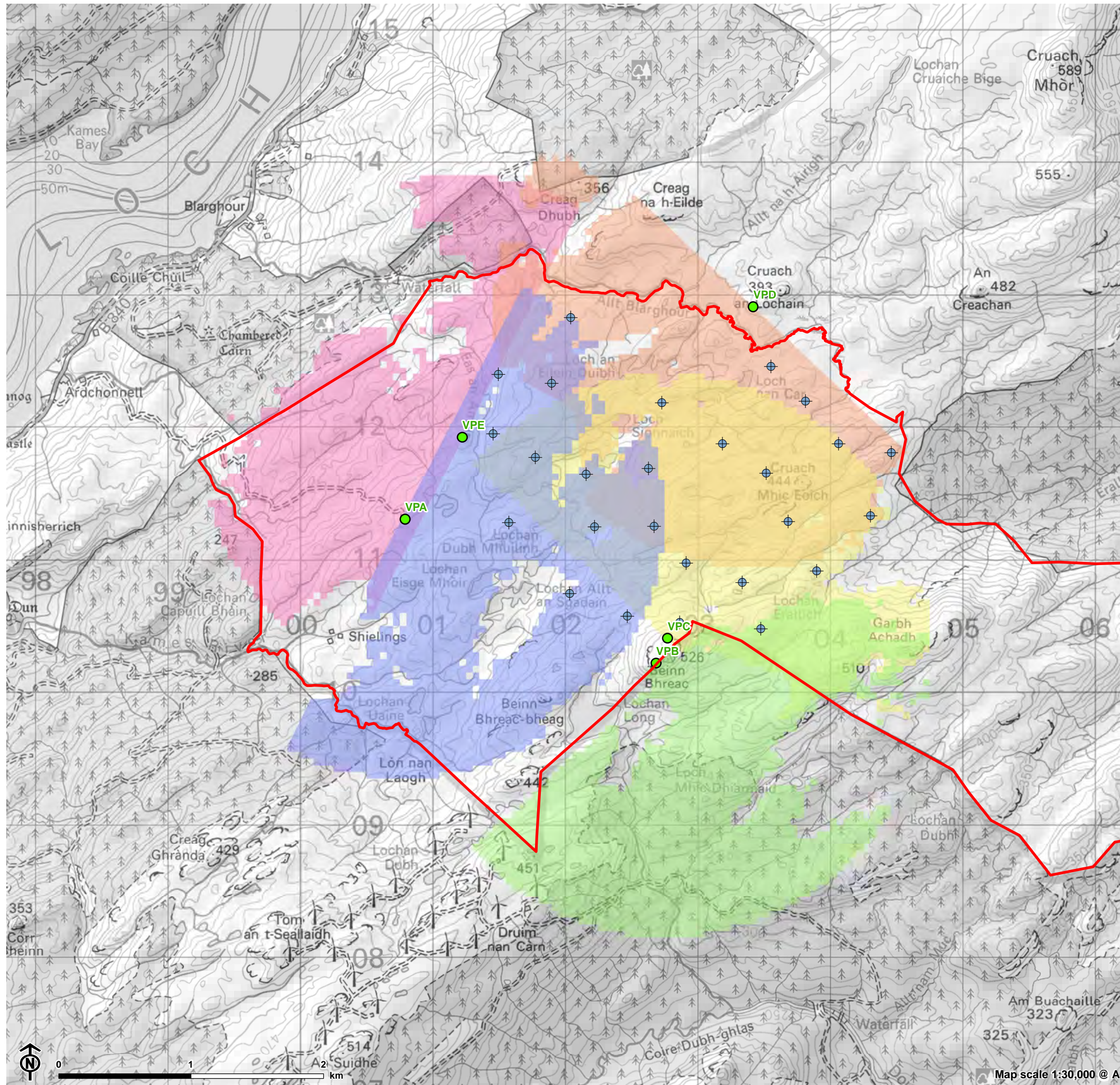
Map scale 1:110,000 @ A3

Figure 8.1: Ornithological Designations within 20km of the Site Boundary



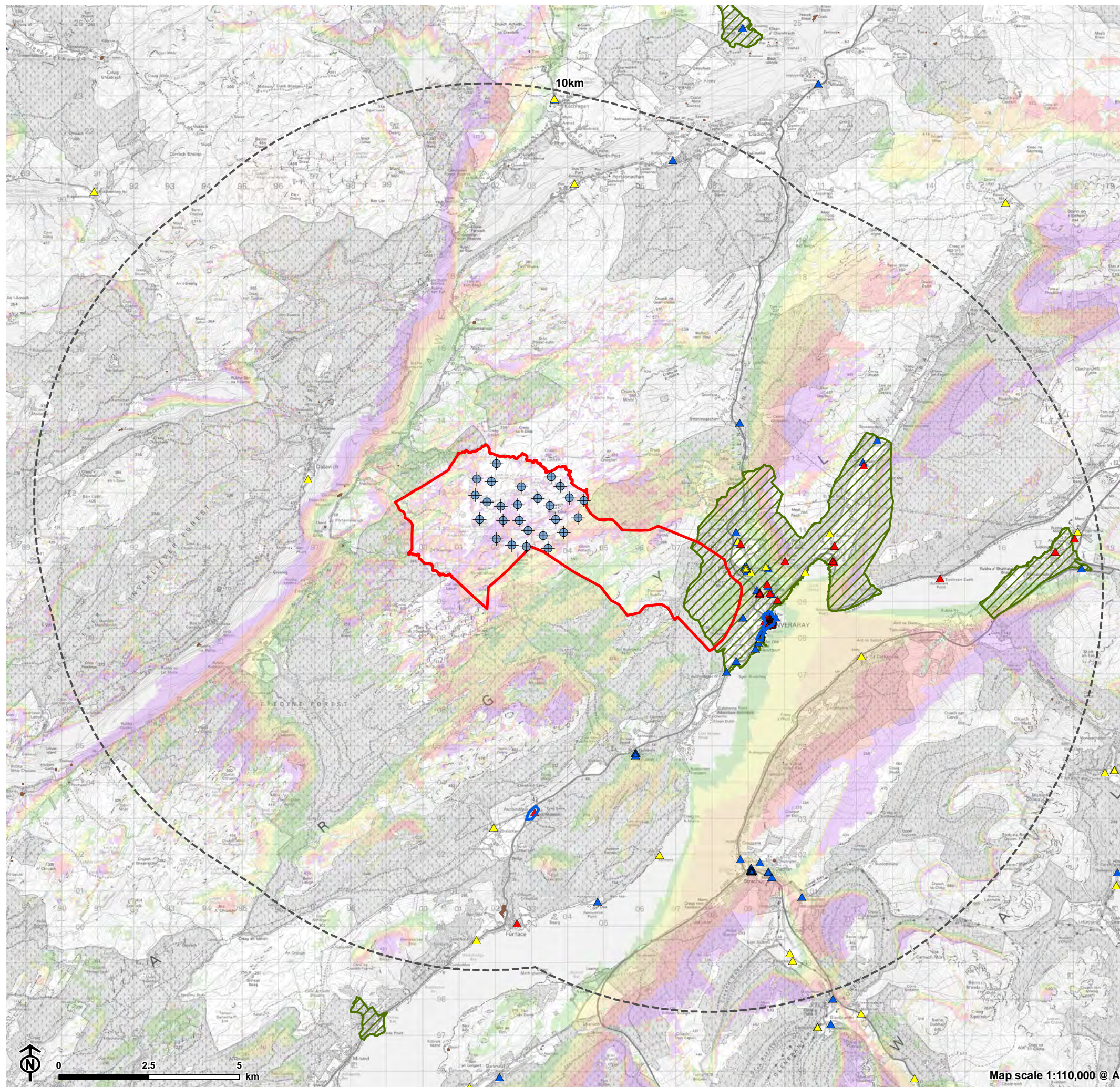
- Site boundary
- Turbine Layout (Scoping)
- 10km from site boundary
- 20km from site boundary
- Special Protection Area (SPA)

Figure 8.2: Vantage Points and Viewsheds



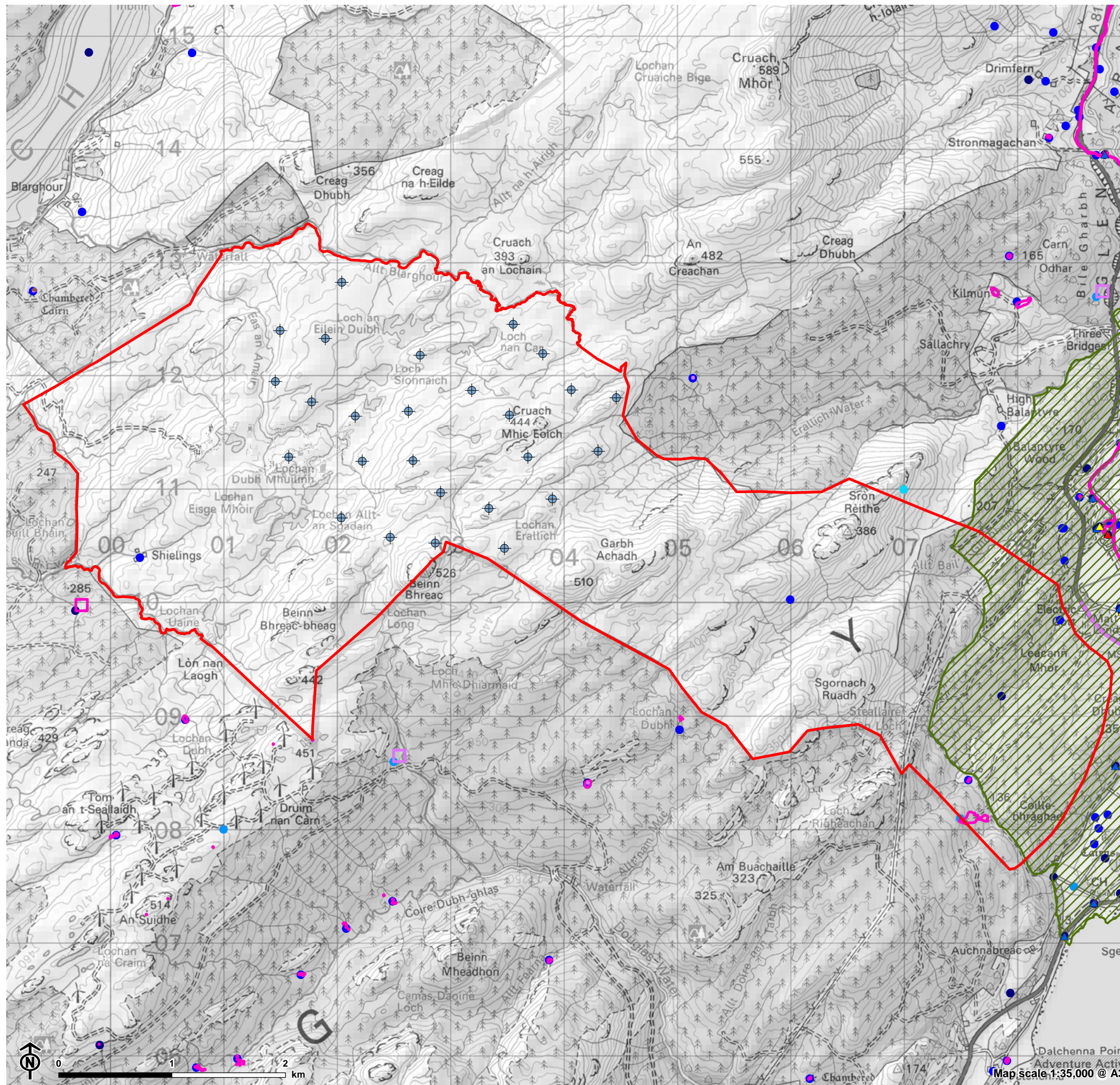
- Site boundary
- + Turbine Layout (Scoping)
- Vantage point
- Vantage point A 2km viewshed
- Vantage point B 2km viewshed
- Vantage point C 2km viewshed
- Vantage point D 2km viewshed
- Vantage point E 2km viewshed

Figure 9.1: ZTV (200m tip height) with designated assets



- Site boundary
- ⊕ Turbine Layout (Scoping)
- 10km from site boundary
- Listed Building**
- ▲ Category A
- ▲ Category B
- ▲ Category C
- Garden and Designed Landscape
- Conservation Area
- Scheduled Monument
- Theoretical turbine visibility (200m)**
- 1-6 turbines visible
- 7-11 turbines visible
- 12-16 turbines visible
- 17-21 turbines visible
- 22-26 turbines visible

Figure 9.2: Designated and non-designated assets with site boundary



- Site boundary
- + Turbine Layout (Scoping)
- 10km from site boundary
- Garden and Designed Landscape
- Scheduled Monument
- Listed Building**
- ▲ Category A
- ▲ Category B
- ▲ Category C
- Canmore (NRHE) points**
- Accuracy of asset location**
- 1km Precision
- 100m Precision
- 10m Precision
- 1m Precision
- Canmore (NRHE) polygons**
- Asset type**
- Known site extent
- Discovery area