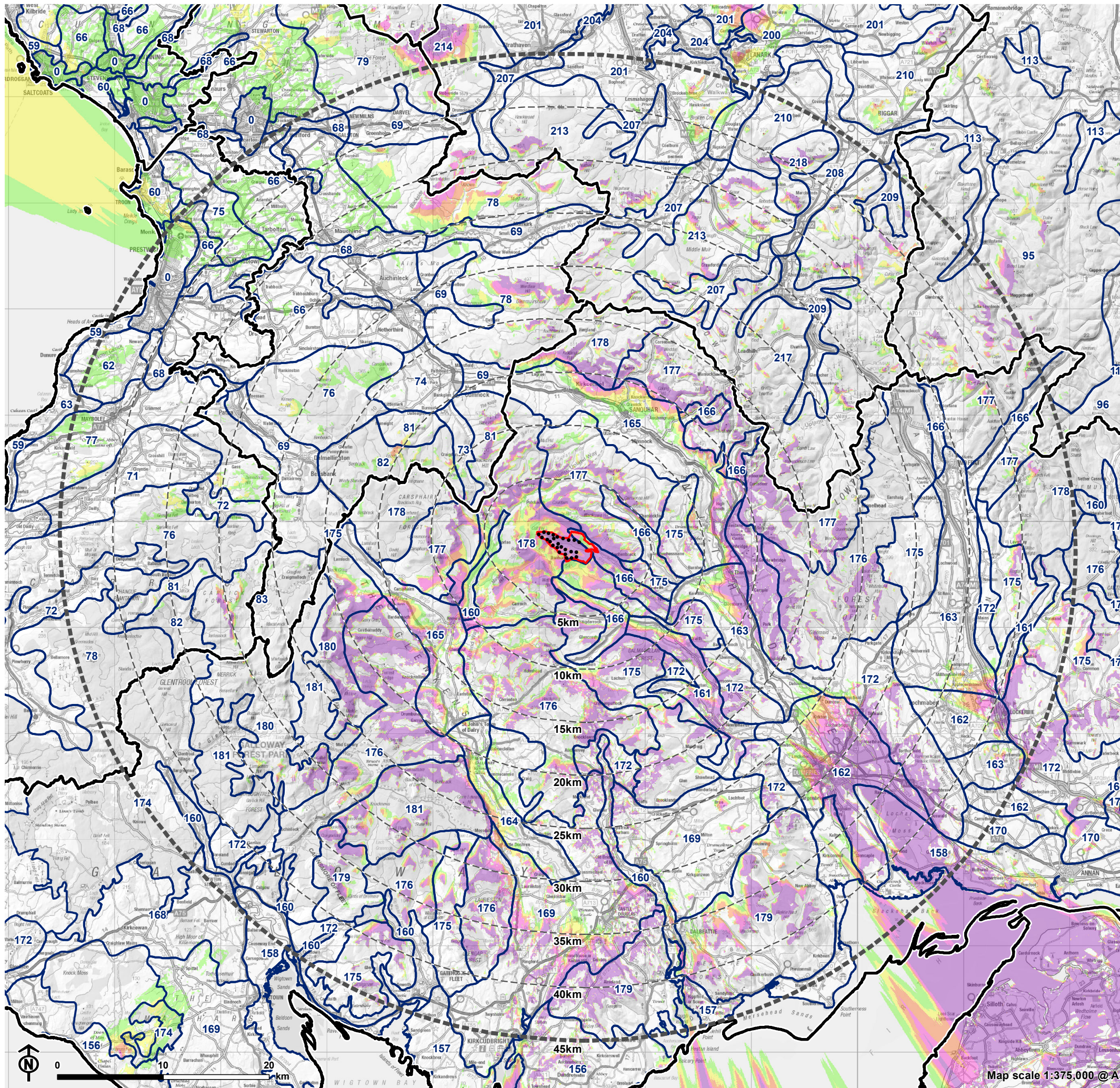


Figure 4.2: Zone of Theoretical Visibility (Scoping Layout [Tip Height]) with Landscape Character Types



- Turbines (Scoping Layout)
- ▭ Site boundary
- - - 5km buffer intervals from the Site boundary
- - - 45km buffer from the Site boundary
- Theoretical Visibility**
- ▭ 1 - 5 Turbines Visible
- ▭ 6 - 10 Turbines Visible
- ▭ 11 - 15 Turbines Visible
- ▭ 16 - 20 Turbines Visible
- ▭ 21 - 25 Turbines Visible
- ▭ Landscape Character Type

- 59: Raised Beach Coast and Cliffs
- 60: Low-Lying Coast
- 62: Coastal Headlands
- 63: Coastal Valley with Policies
- 66: Agricultural Lowlands - Ayrshire
- 68: Lowland River Valleys - Ayrshire
- 69: Upland River Valleys - Ayrshire
- 71: Middle Dale - Ayrshire
- 72: Pastoral Valleys - Ayrshire
- 73: Upland Glen - Ayrshire
- 74: Upland Basin - Ayrshire
- 75: Lowland Hills - Ayrshire
- 76: Foothills - Ayrshire
- 77: Low Hills - Ayrshire
- 78: Plateau Moorland - Ayrshire
- 79: Plateau Moorland with Windfarms - Ayrshire
- 81: Southern Uplands - Ayrshire
- 82: Southern Uplands with Forest - Ayrshire
- 83: Rugged Upland - Ayrshire
- 95: Southern Uplands - Borders
- 96: Southern Uplands with Forest - Borders
- 113: Upland Valley with Pastoral Floor
- 156: Peninsula
- 157: Peninsula with Gorse Knolls
- 158: Coastal Flats - Dumfries & Galloway
- 160: Narrow Wooded River Valley - Dumfries & Galloway
- 161: Pastoral Valley - Dumfries & Galloway
- 162: Lower Dale - Dumfries & Galloway
- 163: Middle Dale - Dumfries & Galloway
- 164: Flooded Valley
- 165: Upper Dale - Dumfries & Galloway
- 166: Upland Glens - Dumfries & Galloway
- 168: Drumlin Pasture in Moss and Moor Lowland
- 169: Drumlin Pastures
- 170: Coastal Plateau - Dumfries & Galloway
- 172: Upland Fringe - Dumfries & Galloway
- 174: Plateau Moorland with Forest - Dumfries & Galloway
- 175: Foothills - Dumfries & Galloway
- 176: Foothills with Forest - Dumfries & Galloway
- 177: Southern Uplands - Dumfries & Galloway
- 178: Southern Uplands with Forest - Dumfries & Galloway
- 179: Coastal Uplands
- 180: Rugged Uplands - Dumfries & Galloway
- 181: Rugged Uplands with Forest - Dumfries & Galloway
- 200: Rolling Farmland - Glasgow & Clyde Valley
- 201: Plateau Farmland - Glasgow & Clyde Valley
- 204: Incised River Valleys
- 207: Upland River Valley - Glasgow & Clyde Valley
- 208: Broad Valley Upland
- 209: Upland Glen - Glasgow & Clyde Valley
- 210: Undulating Farmland and Hills
- 213: Plateau Moorlands - Glasgow & Clyde Valley
- 214: Plateau Moorland with Windfarms - Glasgow & Clyde Valley
- 217: Southern Uplands - Glasgow & Clyde Valley
- 218: Rounded Landmark Hills

The ZTV is calculated to turbine tip height (230m). The terrain model assumes bare ground and is derived from OS Terrain 50 height data. Earth curvature and atmospheric refraction have been taken into account. The ZTV was calculated using ArcMap 10.8.1.