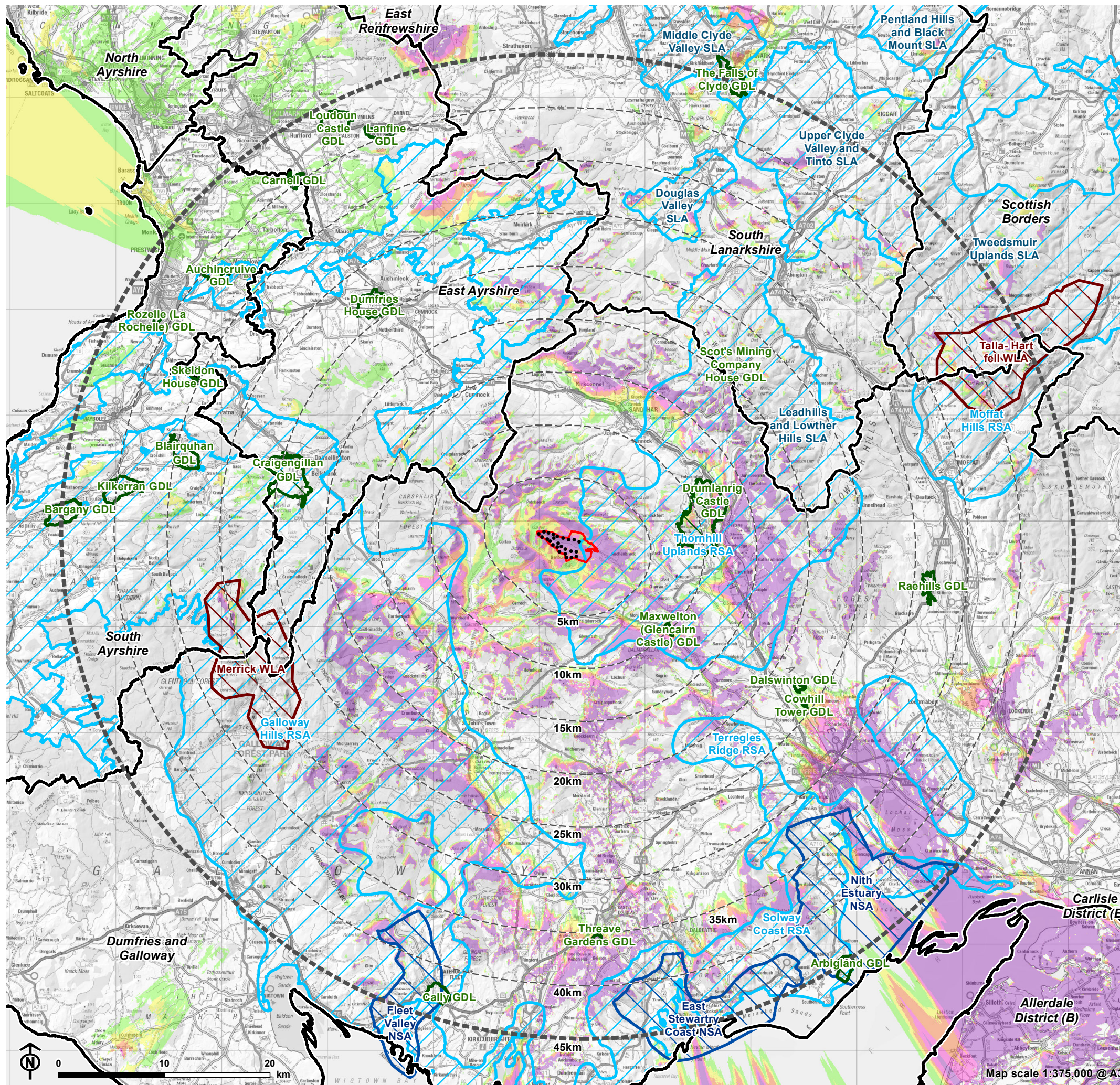


Figure 4.3: Zone of Theoretical Visibility [Tip Height] with Landscape Designations



- Turbines (Scoping Layout)
 - Site boundary
 - 5km buffer intervals from the Site boundary
 - 45km buffer from the Site boundary
 - National Scenic Area (NSA)
 - Local landscape designation*
 - Wild Land Area (WLA)
 - Garden and Designed Landscape (GDL)
- Theoretical Visibility**
- 1 - 5 Turbines Visible
 - 6 - 10 Turbines Visible
 - 11 - 15 Turbines Visible
 - 16 - 20 Turbines Visible
 - 21 - 25 Turbines Visible

The ZTV is calculated to turbine tip height (230m). The terrain model assumes bare ground and is derived from OS Terrain 50 height data. Earth curvature and atmospheric refraction have been taken into account. The ZTV was calculated using ArcMap 10.8.1.

* Local landscape designations are named differently by local authorities. They are named "Regional Scenic Areas (RSA)" in Dumfries and Galloway; "Special Landscape Areas (SLA)" in West Lothian, Scottish Borders, and East Ayrshire; and "Scenic Areas" in South Ayrshire.