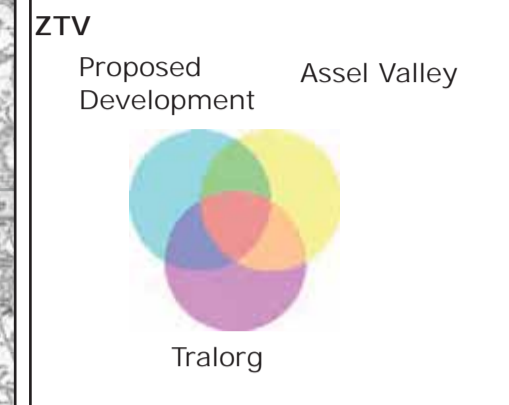


- Legend**
- Proposed Turbines
 - Assel Valley
 - Tralorg
 - ▭ Site Boundary
 - - - 10km Intervals From Outer Turbine
 - - - 45km Radius From Outer Turbine
 - 👁 Viewpoints

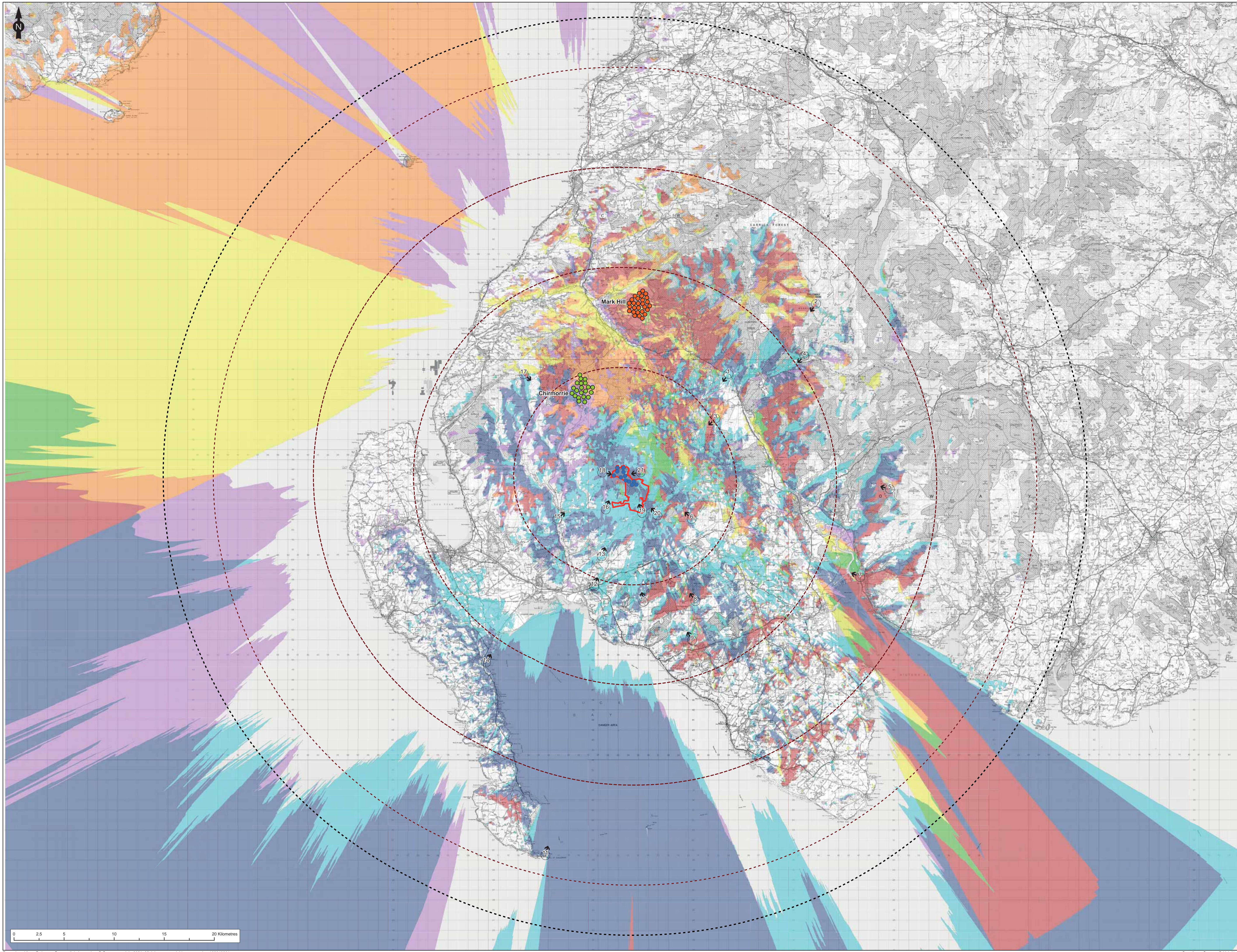


1. The ZTV analysis does not take into account the screening effect of vegetation, buildings and other surface features.
 2. Predicted visibility based on a viewer eye height 2m above ground.
 3. Visibility calculated using Proposed Restoration Profile and a mixture of Ordnance Survey Terrain 5 DTM on a 5m Grid and Ordnance Survey Terrain 50 DTM on a 50m Grid.
 4. Effect of earth's curvature and light refraction is included.

Figure Title
 Figure 5.7j: Cumulative ZTV Proposed development, Assel Valley and Tralorg

Project Name Artfield Forest Wind Farm EIA Report	
Project Number 1620008937	Figure No. 5.7j
Date January 2021	Prepared By GM
Scale 1:165,000 @ A1	Issue 1
Client Artfield Forest Wind Farm Ltd.	





- Legend**
- Proposed Turbines
 - Mark Hill
 - Chirmorrie
 - ▭ Site Boundary
 - - - 10km Intervals From Outer Turbine
 - - - 45km Radius From Outer Turbine
 - 👁 Viewpoints



1. The ZTV analysis does not take into account the screening effect of vegetation, buildings and other surface features.
 2. Predicted visibility based on a viewer eye height 2m above ground.
 3. Visibility calculated using Proposed Restoration Profile and a mixture of Ordnance Survey Terrain 5 DTM on a 5m Grid and Ordnance Survey Terrain 50 DTM on a 50m Grid.
 4. Effect of earth's curvature and light refraction is included.

Figure Title
 Figure 5.7k: Cumulative ZTV Proposed development, Mark Hill and Chirmorrie

Project Name Artfield Forest Wind Farm EIA Report	
Project Number 1620008937	Figure No. 5.7k
Date January 2021	Prepared By GM
Scale 1:165,000 @ A1	Issue 1
Client Artfield Forest Wind Farm Ltd.	

