



Artfield Forest Wind Farm

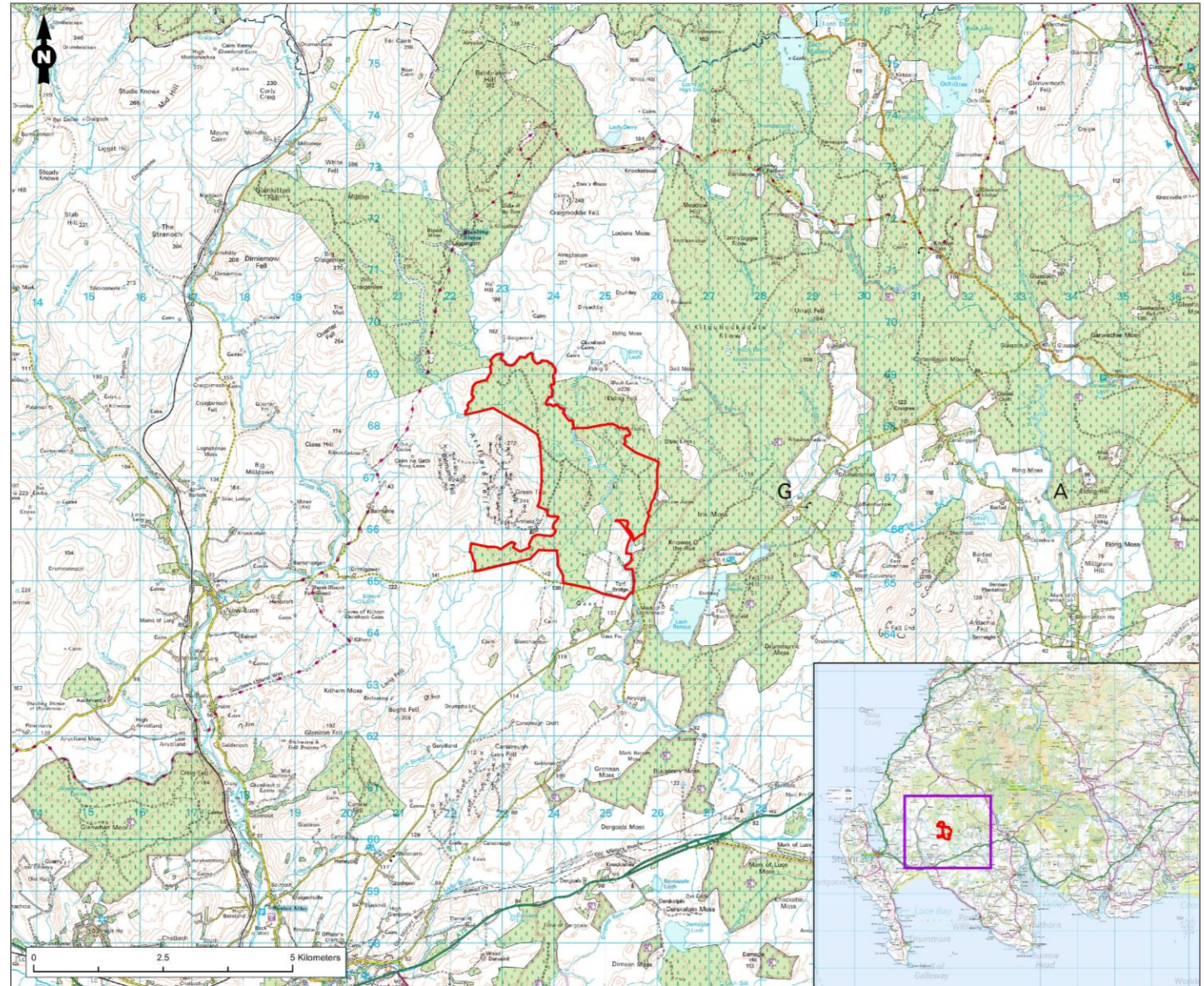
MAY 2020



About the Site

Site Location and Potential

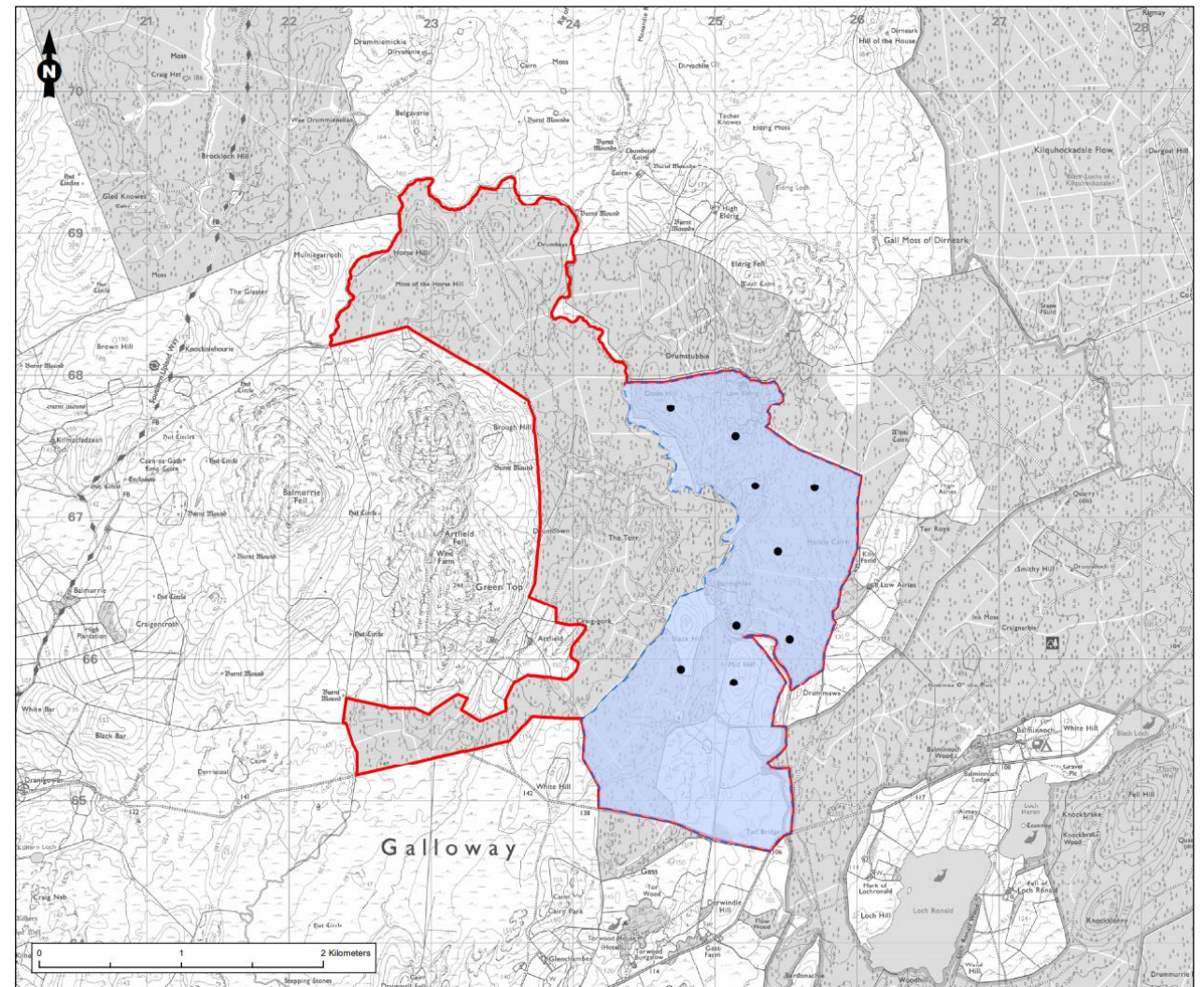
- A maximum of 20 wind turbines
- Considering up to 180 metres tip height
- Project size to be determined as studies are undertaken and consultation feedback received



About the Site

Site History

- Part of the site includes the previously consented Gass Wind Farm
- Gass Wind Farm was consented but its planning permission has expired
- Artfield Forest Wind Farm requires new assessments and a new application
- The previous developer has no involvement in Artfield Forest Wind Farm



Legend

- Gass Wind Farm Consented Layout
- Gass Wind Farm Site Boundary
- Site Boundary

Licence number: 100040631

Next Steps

- Ongoing studies to learn more about the site
- Project website launched
- Online exhibition & interactive consultation in Summer 2020
- Application submission expected late 2020/ early 2021
- Continue to follow Scottish Government advice in relation to Covid-19



Your comments and feedback help inform the final wind farm design.

Statkraft UK @StatkraftUK · Nov 22, 2019
A genuine thank you to all who came to our events this week to talk Slickly Wind Farm. We value your time and feedback. statkraft.co.uk/slickly #Caithness #renewables #windpower

Specialist Sessions
We will be able to discuss all aspects of the project throughout the exhibition. We have arranged for independent experts to be available at the following sessions:

Shared Ownership, with Local Energy Scotland:
Drop in between 11am - 12pm, Thursday 21 November, Edinkillie Community Hall

Broadband, with MonsterNet:
Drop in between 2pm - 4pm, Friday 22 November, Rafford Village Hall

Ecology Worksh with Avian Ecology:

Artfield Forest Project Timeline
Stage 2: Pre-Planning (6 - 12 months)
We request the view of the Scottish Government and Dumfries & Galloway

Statkraft UK @StatkraftUK · Nov 12, 2019
We're in #Caithness next week to discuss our proposal for Slickly Wind Farm, we hope to see you there! #Renewables statkraft.co.uk/media/news/2019-11-12

Consultation Events

Lyth Village Hall, Lyth, Caithness KW1 4UD Tuesday 19th November 2019, 10am to 2pm	Proposed Wind Farm Exhibition We will be able to discuss all aspects of the project throughout the exhibition. We have arranged for independent experts to be available at the following sessions:
Auckengill Village Hall, St Clare Hall, Auckengill, Caithness KW1 4XP	



The Artfield Forest Team

Tom Walker

tom.walker@statkraft.com

John Wallace

john.wallace@statkraft.com



statkraft.co.uk

