



# Artfield Forest Wind Farm

**S36 Planning Submission**

**ECU00003245**

---

APRIL 2021



# Content

- Planning Submission
- Project Overview
- How the Project Changed
- Project Timeline
- How to Make a Representation
- Ongoing Engagement



Baillie Wind Farm



# Planning Submission

- On 24 March 2021 a Section 36 Planning Application for Artfield Forest Wind Farm was submitted to the Energy Consents Unit (ECU)
- The application went live on the ECU website on 7 April 2021
- This presentation provides an overview of:
  - the project submitted to planning, and
  - the key changes during the development period.
- You can view the full Planning Application documents at:
  - [www.energyconsents.scot](http://www.energyconsents.scot) under the application reference ECU 00003245
  - [www.artfield-forest.co.uk](http://www.artfield-forest.co.uk)
  - All documents, including The Non Technical Summary (NTS) of the EIA report are available online and provides a summary of the EIAR documents.
- Thank you for engaging with us during the development period and helping shape the project.



Your comments and feedback help inform the final wind farm design.

Statkraft UK @StatkraftUK · Nov 22, 2019  
A genuine thank you to all who came to our events this week to talk Slickly Wind Farm. We value your time and feedback. [statkraft.co.uk/slickly](http://statkraft.co.uk/slickly) #Caithness #renewables #windpower

**Specialist Sessions**  
We will be able to discuss all aspects of the project throughout the exhibition. We have arranged for independent experts to be available at the following sessions:

**Shared Ownership, with Local Energy Scotland:**  
Drop in between 11am - 12pm, Thursday 21 November, EdinKille Community Hall

**Broadband, with MonsterNet:**  
Drop in between 2pm - 4pm, Friday 22 November, Rafford Village Hall

**Ecology Worksh with Avian Ecology:**

**Consultation Events**

**Lyth Village Hall, Lyth, Caithness KW1 4UD**  
Tuesday 19th November 2019, 10am to 2pm

**Auckengill Village Hall, St Claire Hall, Auckengill, Caithness KW1 4XP**

**Artfield Forest Project Timeline**  
Stage 2: Pre-Planning (6 - 12 months)  
We request the view of the Scottish Government and Dumfries & Galloway

**Proposed Wind Farm Exhibition**  
We would like to invite you to our public exhibition and to discuss the project in detail. The exhibition will be held at the following venues: Lyth Village Hall, Lyth, Caithness KW1 4UD (Tuesday 19th November 2019, 10am to 2pm) and Auckengill Village Hall, St Claire Hall, Auckengill, Caithness KW1 4XP (Tuesday 19th November 2019, 10am to 2pm).



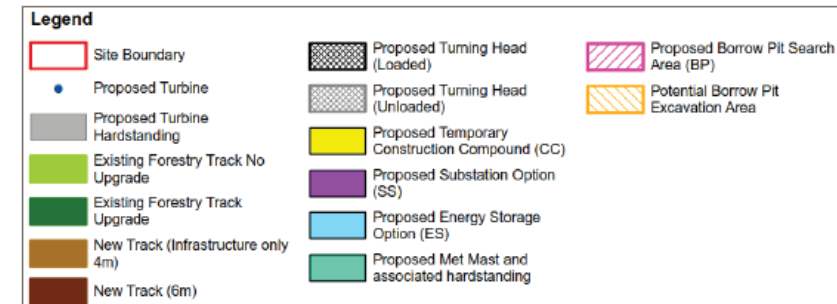
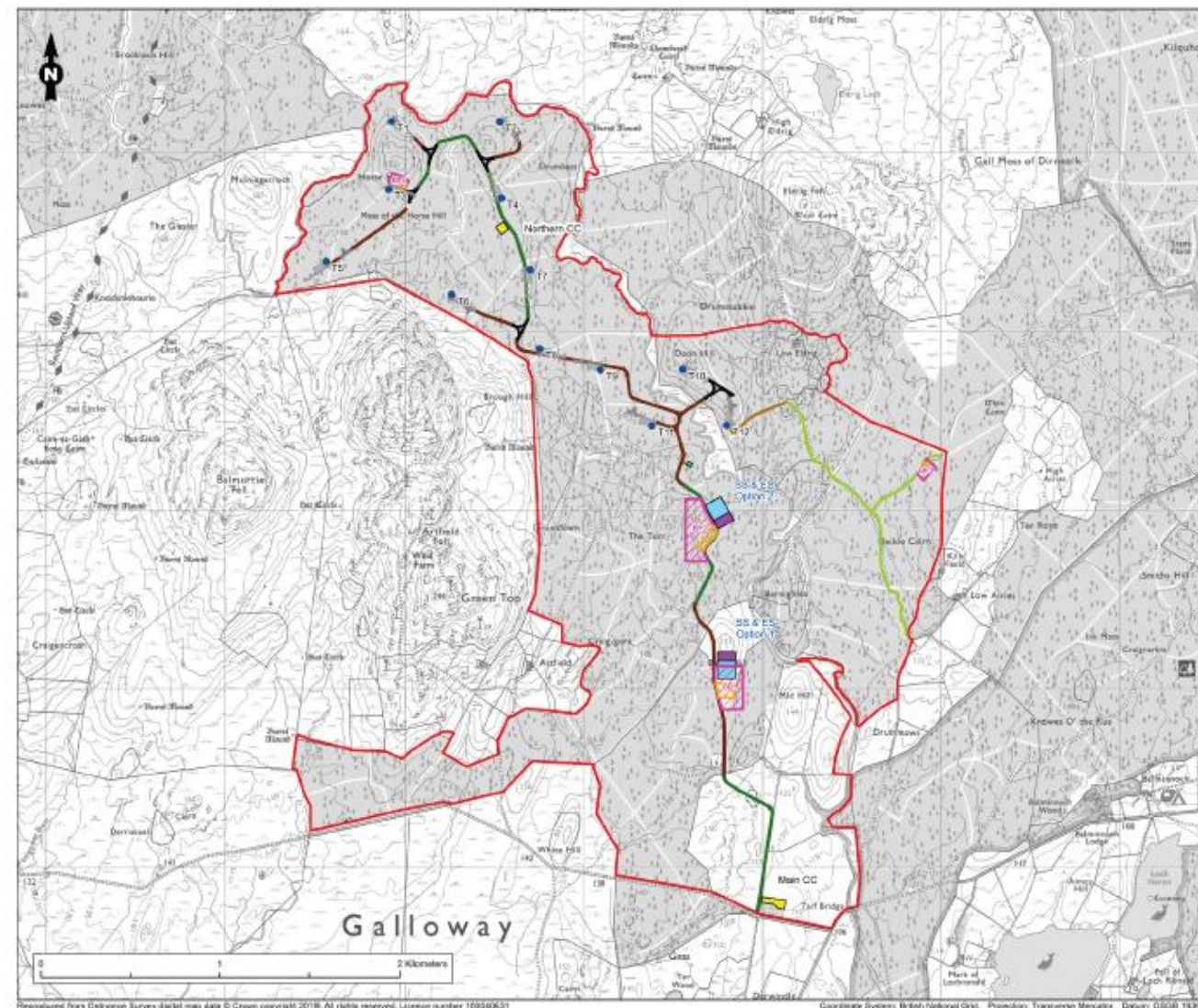
# Planning submission

The project we submitted is located:

- 8 km northwest of Kirkcowan and 15 km west of Newton Stewart.

The project we submitted comprises of:

- 12 wind turbines
- Up to 180 metres to blade tip height
- An installed capacity of over 50MW's, expected to be 67.2MW
- Energy storage opportunity
- 30 year operating period





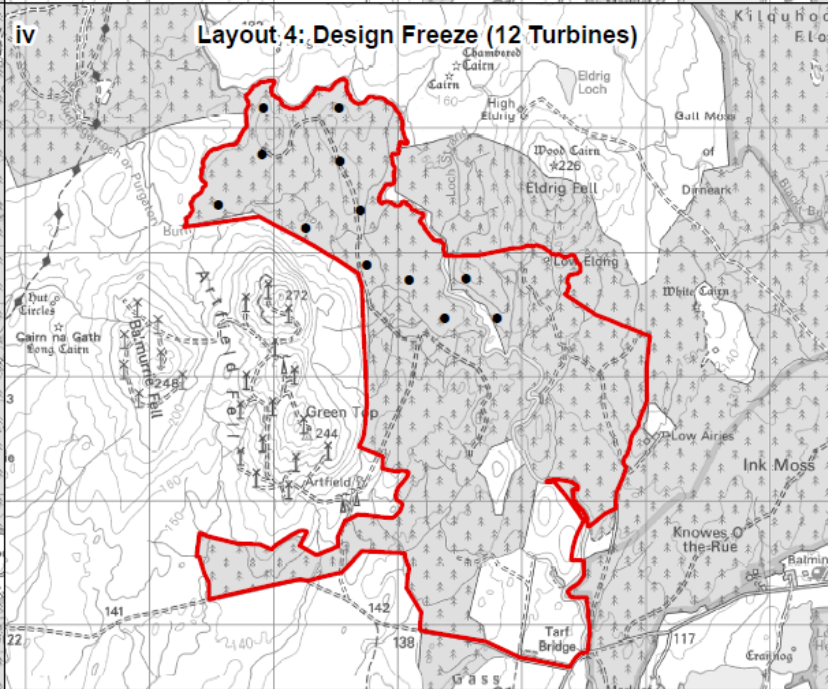
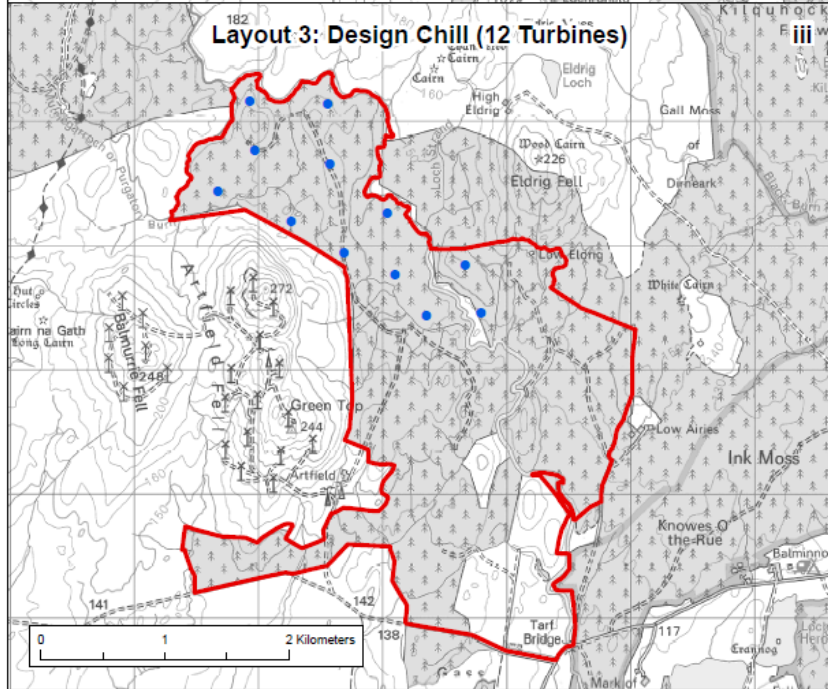
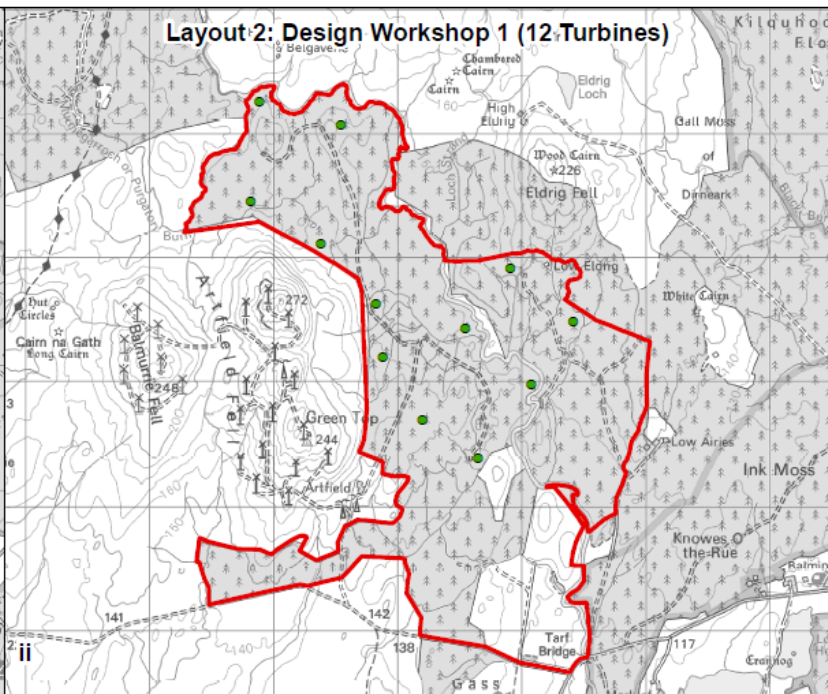
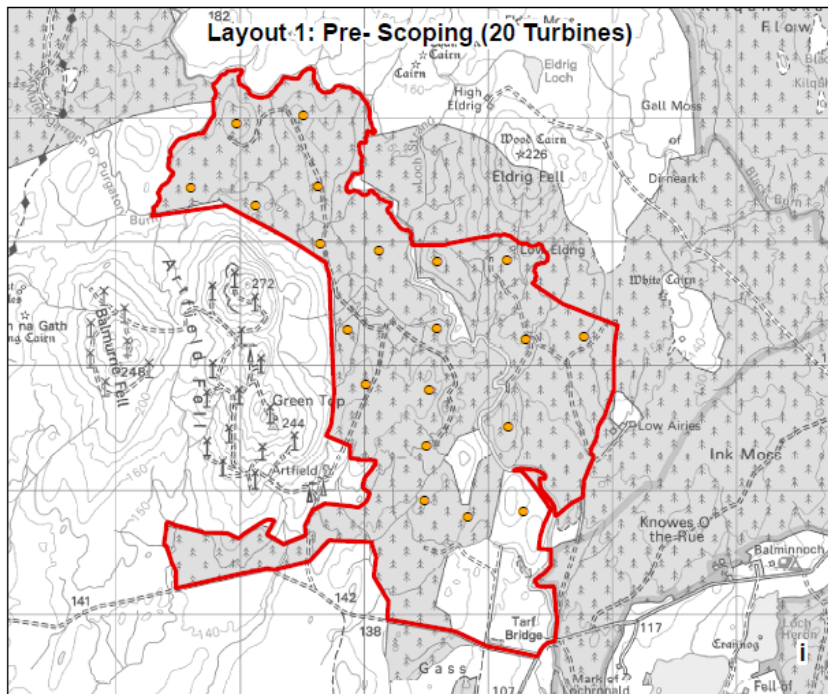
# Why the site was chosen

- Located in area with good wind speeds
  - The site includes the location of the previously consented Gass Wind Farm. There was no economically viable route to market for their proposal.
  - Statkraft have developed this entirely new application, a larger scheme across a wider land holding.
- Existing site use
  - The site is currently used primarily for commercial forestry.
  - The management of the forest, by periodic felling and replanting, means the site is considered of limited nature conservation value.
- Identified by Local Authority as an Area with potential for wind farm development
  - The site is not within any formal landscape designations and has been identified as an area with potential for wind farm development by Dumfries and Galloway (October 2019).
- Surrounding area
  - The site has good access for turbine deliveries and is relatively distant from settlements.

# How the site has changed over the development period

- Reduction in the number of turbines
  - The scheme has reduced from 20 to 12 turbines
- Turbine locations amended:
  - Located further north within the site, further away from residential properties and local roads
  - Easterly turbines have been removed to reduce the cultural heritage impact on Wood Cairn

These changes have been made following environmental studies and consultation feedback and are illustrated on the next slide.



- Legend**
- Site Boundary
  - Proposed Turbine (Pre-Scoping)
  - Proposed Turbine (Design Workshop 1)
  - Proposed Turbines (Design Chill)
  - Proposed Turbines (Design Freeze)

Figure Title  
**Figure 3.2: Turbine Layout Evolution**

Project Name  
**Artfield Forest Wind Farm EIA Report**

Project Number <b>1620008937</b>	Figure No. <b>3.2</b>
Date <b>November 2020</b>	Prepared By <b>AC</b>
Scale <b>1:40,000 @A3</b>	Issue <b>1</b>

Client  
**Artfield Forest Wind Farm Ltd**

**RAMBOLL**

# Project Timeline





# Making a Representation

- Representations for the project can now be made to the Energy Consents Unit (ECU)
- Representations can be made through the ECU website:
- [www.energyconsents.scot/Register.aspx](http://www.energyconsents.scot/Register.aspx);
- email to [representations@gov.scot](mailto:representations@gov.scot);
- post to the Scottish Government Energy Consents Unit, 4<sup>th</sup> Floor, 5 Atlantic Quay, 150 Broomielaw, Glasgow G2 8LU
- See the website for more information on the detail to include in any representation.
- Members of the public and interested groups can submit a representation until 19 May 2021, although Ministers may consider representations received after this date.



A collage of social media posts and project information cards. At the top left, a tweet from Statkraft UK dated Nov 22, 2019, says: "Your comments and feedback help inform the final wind farm design." Below this is a card titled "Specialist Sessions" with text: "We will be able to discuss all aspects of the project throughout the exhibition. We have arranged for independent experts to be available at the following sessions: Shared Ownership, with Local Energy Scotland: Drop in between 11am - 12pm, Thursday 21 November, EdinKille Community Hall". To the right is a photo of an exhibition hall with people. Below the "Specialist Sessions" card is another card titled "Broadband, with MonsterNet:" with text: "Drop in between 2pm - 4pm, Friday 22 November, Rairford Village Hall". At the bottom left is a card titled "Artfield Forest Project Timeline" with text: "Stage 2: Pre-Planning (6 - 12 months) We request the view of the Scottish Government and Dumfries &amp; Galloway". At the bottom right is a card titled "Consultation Events" with text: "Lyth Village Hall, Lyth, Caithness KW1 4UD Tuesday 19th November 2019, 10am to 2pm" and "Auckengill Village Hall, St Clare Hall, Auckengill, Caithness KW1 4XP".



# Ongoing Engagement

- If you have any questions or queries on the project please do get in touch.
  - [Ruth.semple@statkraft.com](mailto:Ruth.semple@statkraft.com)
  - [John.wallace@statkraft.com](mailto:John.wallace@statkraft.com)
- As the project is in the Planning Process, we hope to progress discussions on other aspects of the project:
  - Community Benefit Fund
  - Shared Ownership opportunity
  - Potential for improved Broadband
- Potential local suppliers for the project are encouraged to register their interest on our [website](#).



A collage of social media posts and project information cards. At the top, a tweet from Statkraft UK (@StatkraftUK) dated Nov 22, 2019, thanks attendees for their feedback on the Slicky Wind Farm. Below it, a card titled 'Specialist Sessions' lists 'Shared Ownership, with Local Energy Scotland' on Thursday 21 November at EdinKille Community Hall. Another card promotes 'Broadband, with MonsterNet' on Friday 22 November at Ralford Village Hall. A third card mentions 'Ecology Worksh with Avian Ecology'. To the right, another tweet from Statkraft UK dated Nov 12, 2019, mentions a consultation event at Lyth Village Hall, Lyth, Caithness KW1 4UD on Tuesday 19th November 2019, 10am to 2pm. A map of the proposed wind farm exhibition area is also visible.





## The Artfield Forest Team

Ruth Semple

Ruth.Semple@statkraft.com

John Wallace

john.wallace@statkraft.com

---

[www.artfield-forest.co.uk](http://www.artfield-forest.co.uk)



---

[statkraft.co.uk](http://statkraft.co.uk)

