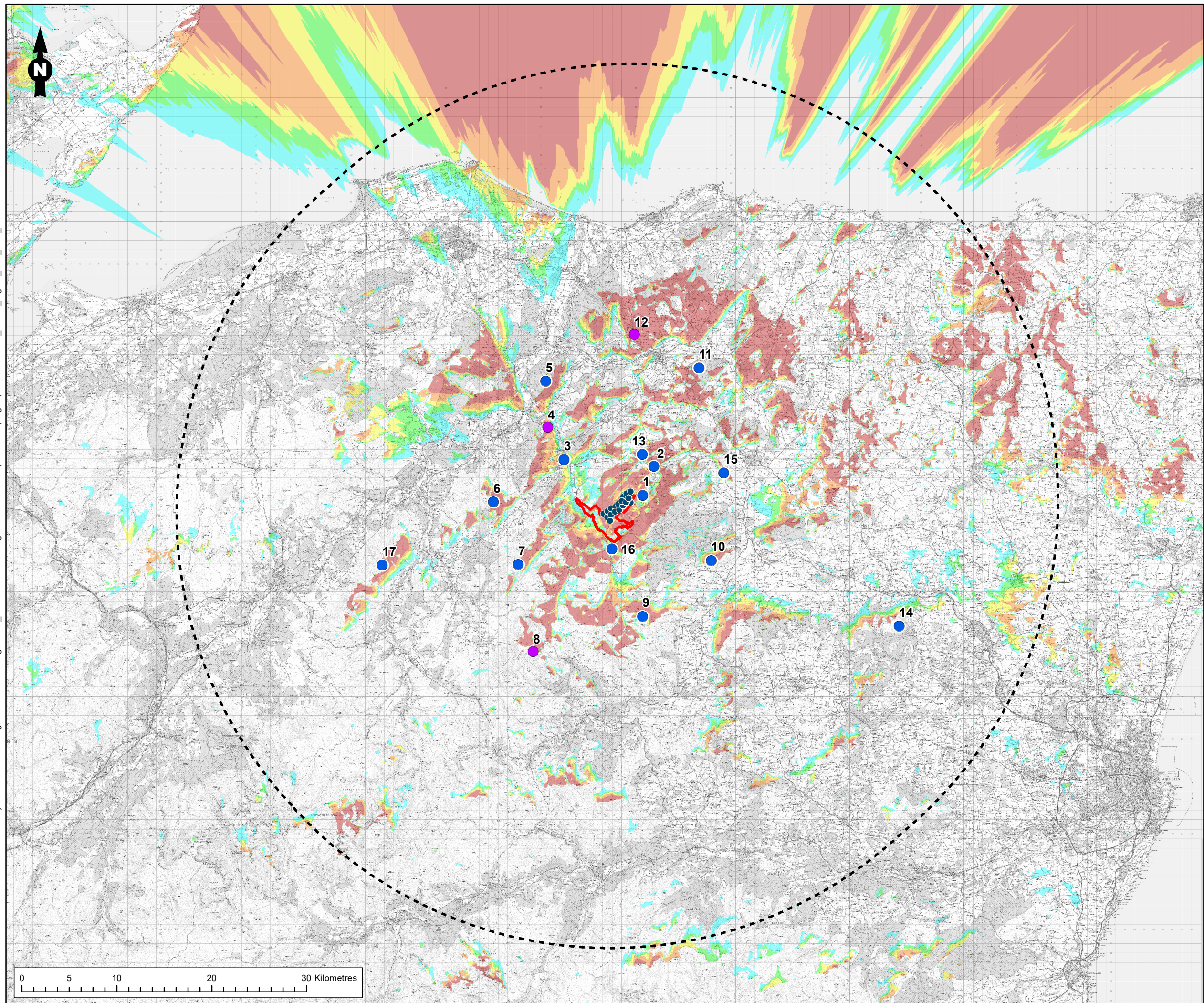


C:\Users\GMCLACHLAN\OneDrive - Ramboll\Projects\RemoteWorking\1620010178 Craig Watch - Wind Farm Planning Services\GIS\MapFiles\ScopingReport\LVIA\162\_10178\_Fig3.5\_VPs\_ZTV\_C.mxd



**Legend**

- Site Boundary
- 45 km Buffer from the outer turbines of the Proposed Development
- Preliminary Turbine Location (Scoping Stage) (200m tip height)

**Viewpoint Type**

- Daytime
- Daytime and Night time

**Number of turbines visible at blade tip level (200m)**

- 1 - 4
- 5 - 8
- 9 - 12
- 13 - 16
- 17 - 18

1. The ZTV analysis does not take into account the screening effect of vegetation, buildings and other surface features.  
 2. Predicted visibility based on a viewer eye height 2m above ground.  
 3. Visibility calculated using Ordnance Survey Terrain 5 DTM on a 5m Grid.  
 4. Effect of earth curvature and light refraction is included.

Figure Title  
**Figure 3.5: LVIA Viewpoints with 200m ZTV**

Project Name <b>Craig Watch Wind Farm Scoping Report</b>	
Project Number 1620010178	Figure No. 3.5
Date November 2020	Prepared By CF/GM
Scale 1:380,000 @A3	Issue 1
Client <b>Craig Watch Wind Farm Limited</b>	

**RAMBOLL**

