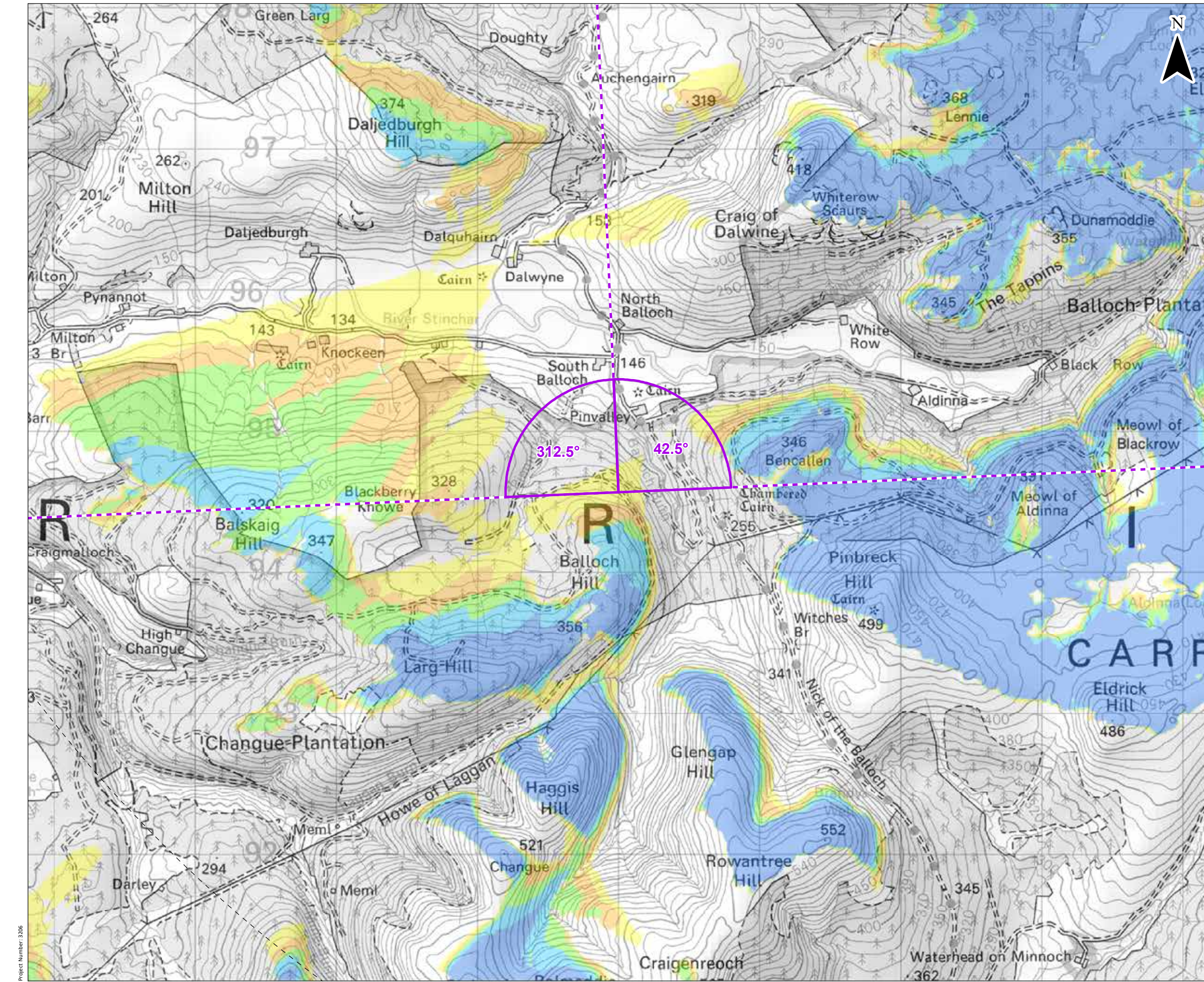


© Crown copyright and database rights 2021. Ordnance Survey 0100013673. Contains OS data © Crown copyright and database right (2021).



© Crown copyright and database rights 2021. Ordnance Survey 0100013673. Contains OS data © Crown copyright and database right (2021).

KEY

- Site Boundary
- Proposed Turbine
- 10 km Radii
- 45 km LVIA Study Area
- Viewpoint Location
- Cumulative Wireline (90°HFOV)

Blade Tip ZTV

No. of Turbines Theoretically Visible

- 1 - 2
- 3 - 4
- 5 - 6
- 7 - 8
- 9

Blade tip: 180 / 200m | Observer height: 2m
 DTM: OS T5/T50 DTM | Surface features: Excluded
 DTM resolution: 10m | Earth curvature: Included

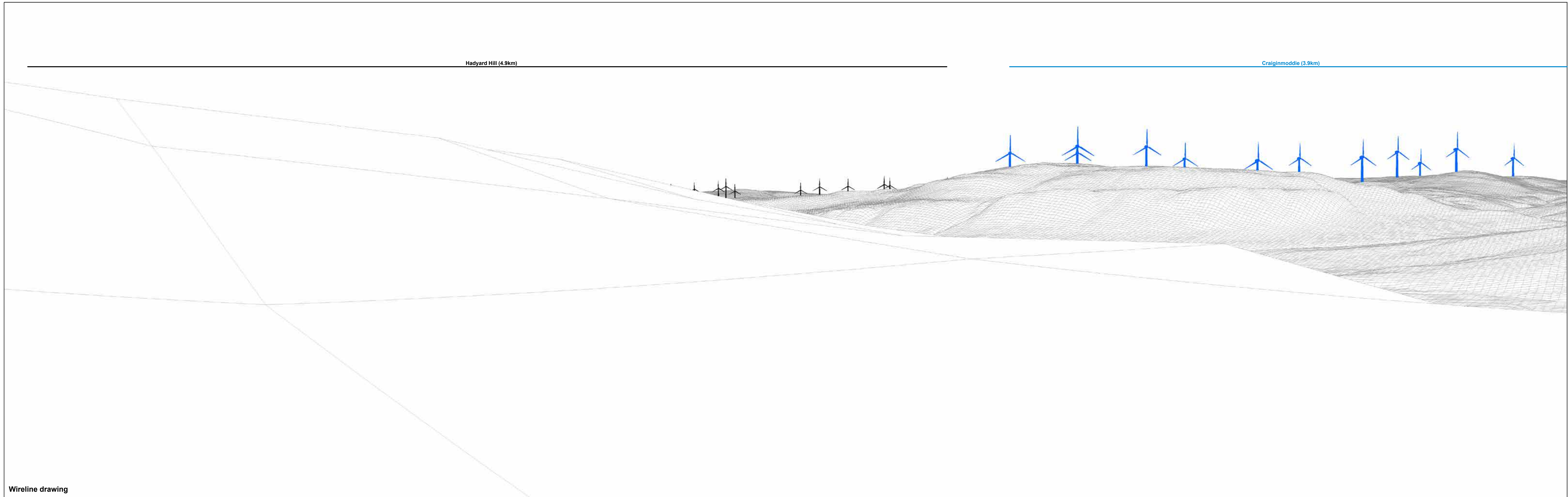
0 0.5 1 km
Scale 1:25,000 @ A3

Statkraft **open**
 optimised environments

Knockcronal Wind Farm
 Environmental Impact Assessment Report
 Figure 6.45a

Viewpoint B: Barr Trails

Date: 08/11/2021 | Drawn by: JM | Checked by: SG | Version: V1



Wireline drawing

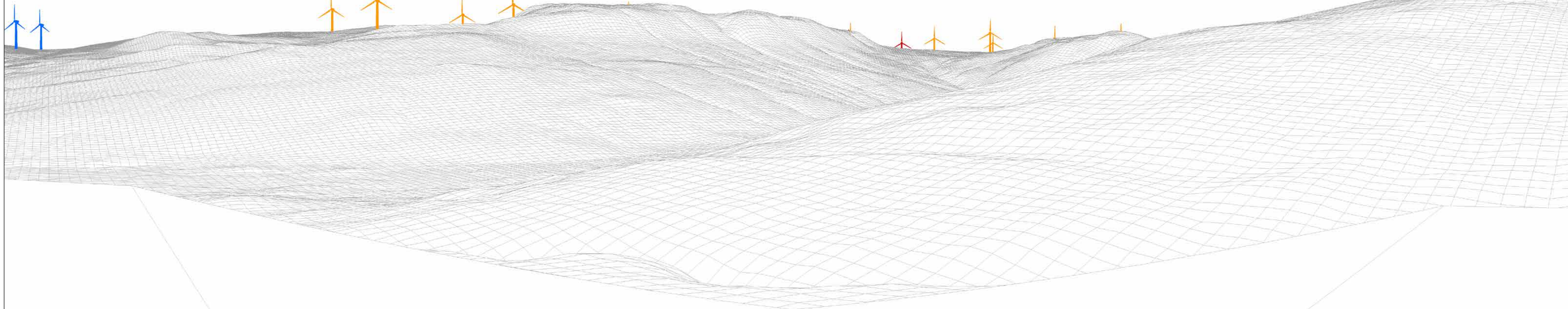
OS reference:	232999 E 594568 N	Horizontal field of view:	90° (cylindrical projection)
Eye level:	255.5 mAOD	Principal distance:	522 mm
Direction of view:	312.5°	Paper size:	841 x 297 mm (half A1)
Nearest turbine:	5977 m	Correct printed image size:	820 x 130 mm

Figure 6.45b
Viewpoint B: Barr Trails
Knockcronal

Craiginmoddie (3.9km)

Proposed Development (6km)

Carrick (4km)



Wireline drawing

OS reference: 232999 E 594568 N
 Eye level: 255.5 mAOD
 Direction of view: 42.5°
 Nearest turbine: 5977 m

Horizontal field of view: 90° (cylindrical projection)
 Principal distance: 522 mm
 Paper size: 841 x 297 mm (half A1)
 Correct printed image size: 820 x 130 mm

Figure 6.45c
 Viewpoint B: Barr Trails
 Knockcronal