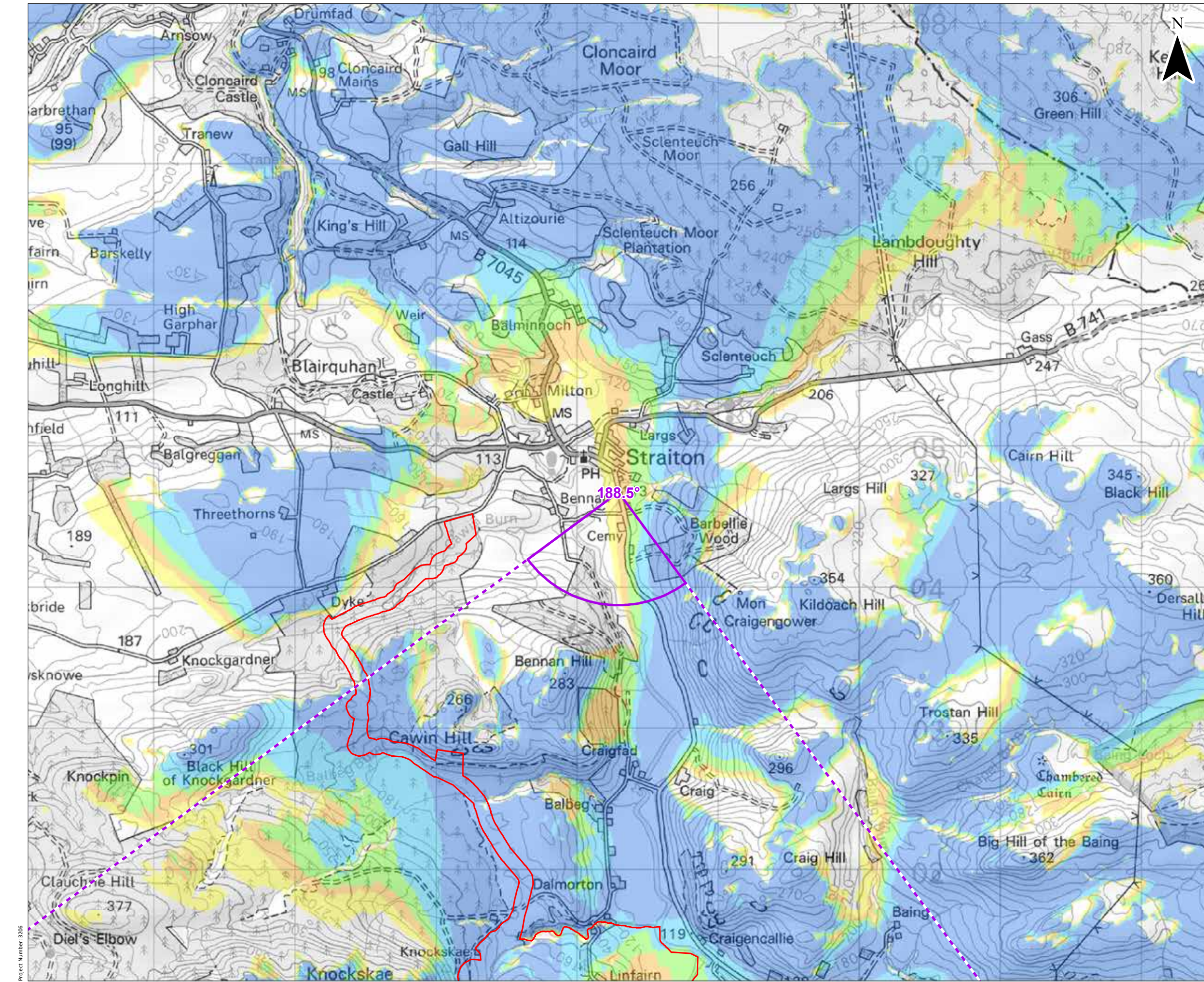


© Crown copyright and database rights 2021. Ordnance Survey 0100031673. Contains OS data © Crown copyright and database right (2021).



© Crown copyright and database rights 2021. Ordnance Survey 0100031673. Contains OS data © Crown copyright and database right (2021).

KEY

- Site Boundary
- Proposed Turbine
- 10 km Radii
- 45 km LVIA Study Area
- Viewpoint Location
- Cumulative Wireline (90°HFOV)

Blade Tip ZTV

No. of Turbines Theoretically Visible

- 1 - 2
- 3 - 4
- 5 - 6
- 7 - 8
- 9

Blade tip: 180 / 200m | Observer height: 2m
 DTM: OS T5/T50 DTM | Surface features: Excluded
 DTM resolution: 10m | Earth curvature: Included

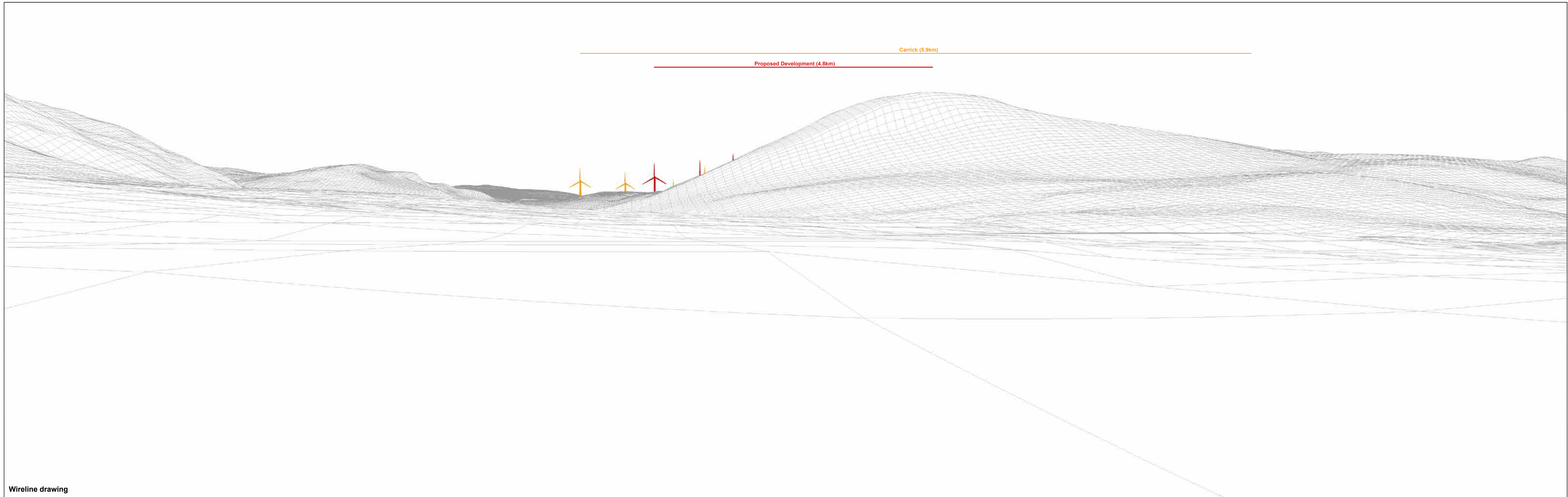
0 0.5 1 km
 Scale 1:25,000 @ A3

ITENERGISED

Knockcraon Wind Farm
 Environmental Impact Assessment Report
 Figure 6.46a

Viewpoint C: Core path SA47 / Bannan Walk
 - Minor Road South of Straiton (LVIA)

Date: 08/11/2021 | Drawn by: JM | Checked by: SG | Version: V1



Wireline drawing

OS reference: 238293 E 604673 N
 Eye level: 110.8 mAOD
 Direction of view: 188.5°
 Nearest turbine: 4771 m

Horizontal field of view: 90° (cylindrical projection)
 Principal distance: 522 mm
 Paper size: 841 x 297 mm (half A1)
 Correct printed image size: 820 x 130 mm

Viewpoint C: Core path SA47 / Bennan Walk - Minor Road South of Straiton (LVIA Viewpoint 6)

Figure 6.46b

Knockcronal

© Crown copyright, All rights reserved (2021). Licence number 0100031673