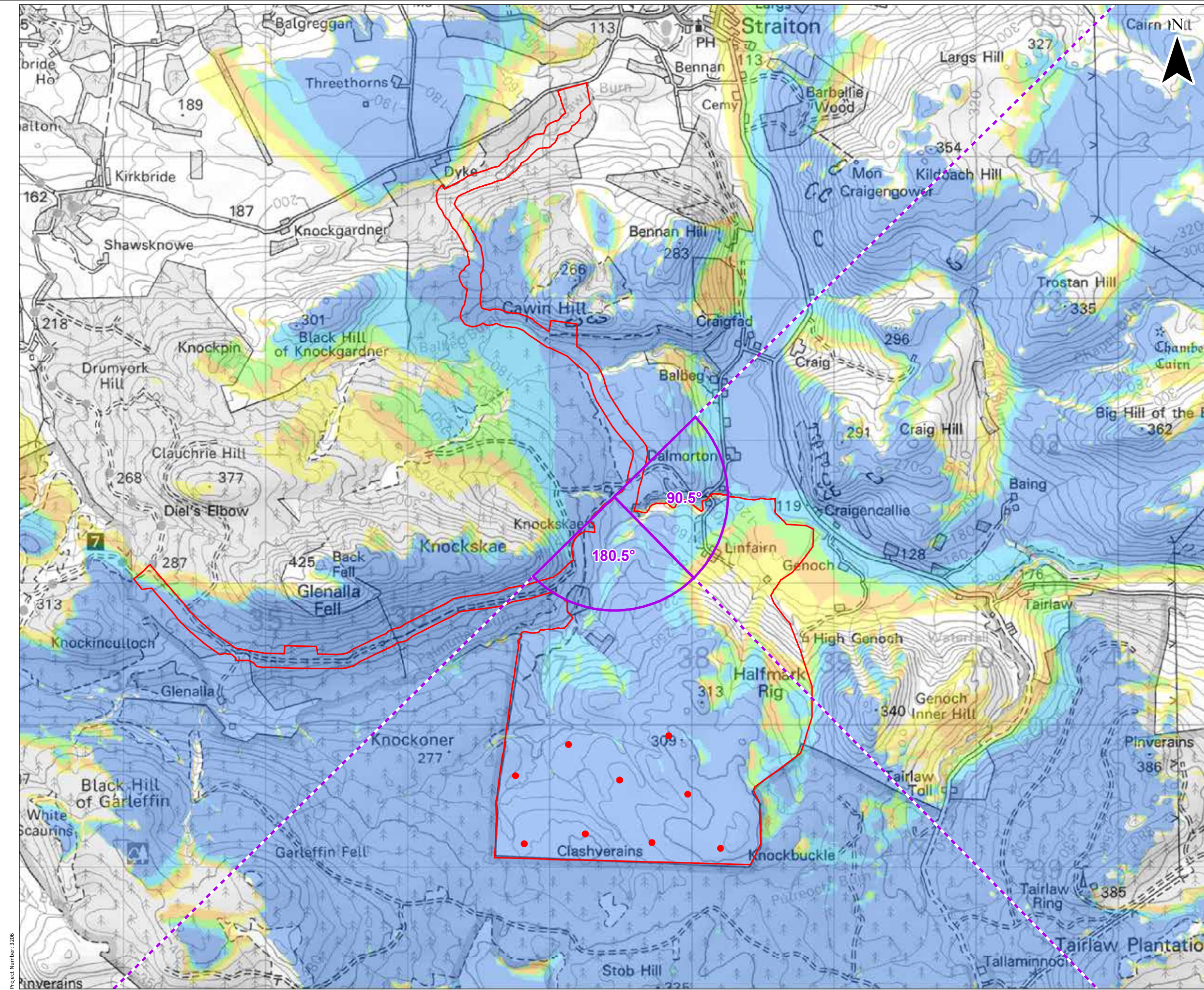


© Crown copyright and database rights 2021. Ordnance Survey 0100031673. Contains OS data © Crown copyright and database right (2021).



© Crown copyright and database rights 2021. Ordnance Survey 0100031673. Contains OS data © Crown copyright and database right (2021).

KEY

- Site Boundary
- Proposed Turbine
- 10 km Radii
- 45 km LVIA Study Area
- Viewpoint Location
- Cumulative Wireline (90°HFOV)

Blade Tip ZTV

No. of Turbines Theoretically Visible

	1 - 2
	3 - 4
	5 - 6
	7 - 8
	9

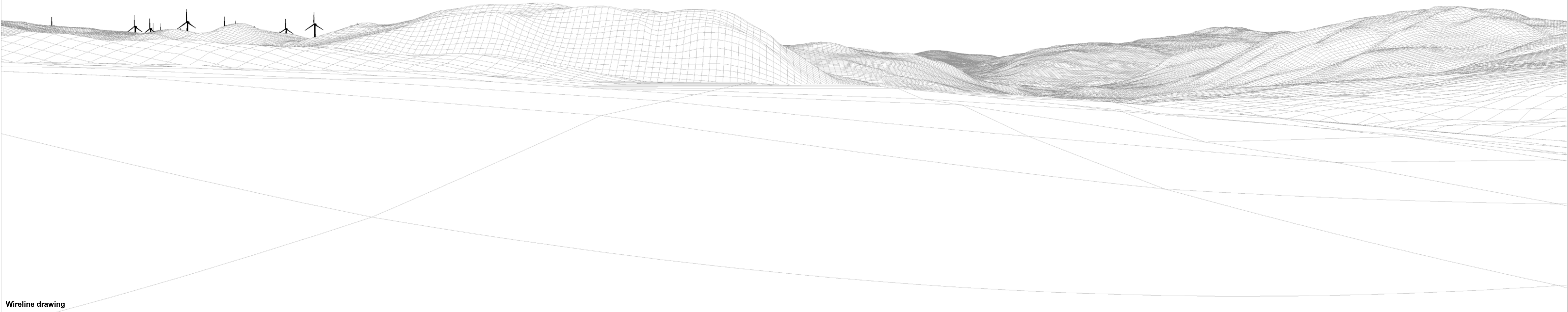
Blade tip: 180 / 200m | **Observer height:** 2m
DTM: OS T5/T50 DTM | **Surface features:** Excluded
DTM resolution: 10m | **Earth curvature:** Included

0 0.5 1 km
 Scale 1:25,000 @ A3

Knockcraigh Wind Farm
 Environmental Impact Assessment Report
 Figure 6.48a
 Viewpoint E: Core path SA47 / Bannockburn
 – Track near Knockcraigh

Date: 08/11/2021 | Drawn by: JM | Checked by: SG | Version: V1

Dersalloch (3.5km)



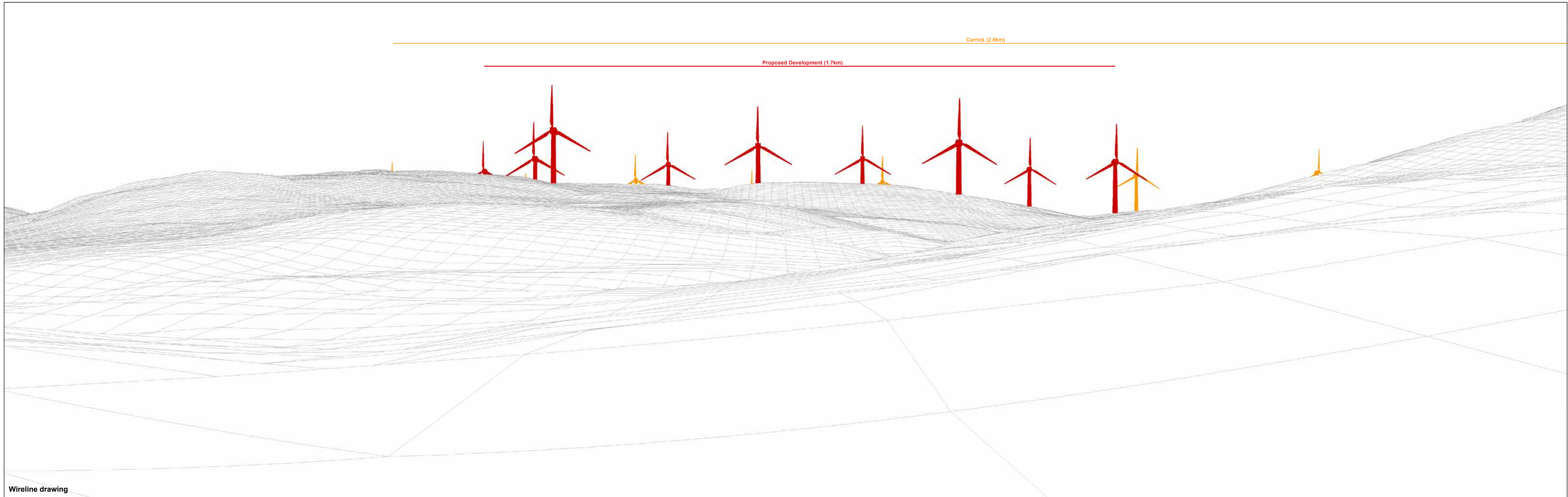
Wireline drawing

OS reference: 237453 E 601607 N
Eye level: 171.6 mAOD
Direction of view: 90.5°
Nearest turbine: 1727 m

Horizontal field of view: 90° (cylindrical projection)
Principal distance: 522 mm
Paper size: 841 x 297 mm (half A1)
Correct printed image size: 820 x 130 mm

Figure 6.48b
Viewpoint E: Core path SA47 / Bennan Walk – Track near Knockskae

Knockcronal



Wireline drawing

OS reference:	237453 E 601607 N	Horizontal field of view:	90° (cylindrical projection)
Eye level:	171.6 mAOD	Principal distance:	522 mm
Direction of view:	180.5°	Paper size:	841 x 297 mm (half A1)
Nearest turbine:	1727 m	Correct printed image size:	820 x 130 mm

Figure 6.48c
Viewpoint E: Core path SA47 / Bennan Walk – Track near Knockskae

Knockcronal