



Knockcronal Wind Farm

www.knockcronal.co.uk

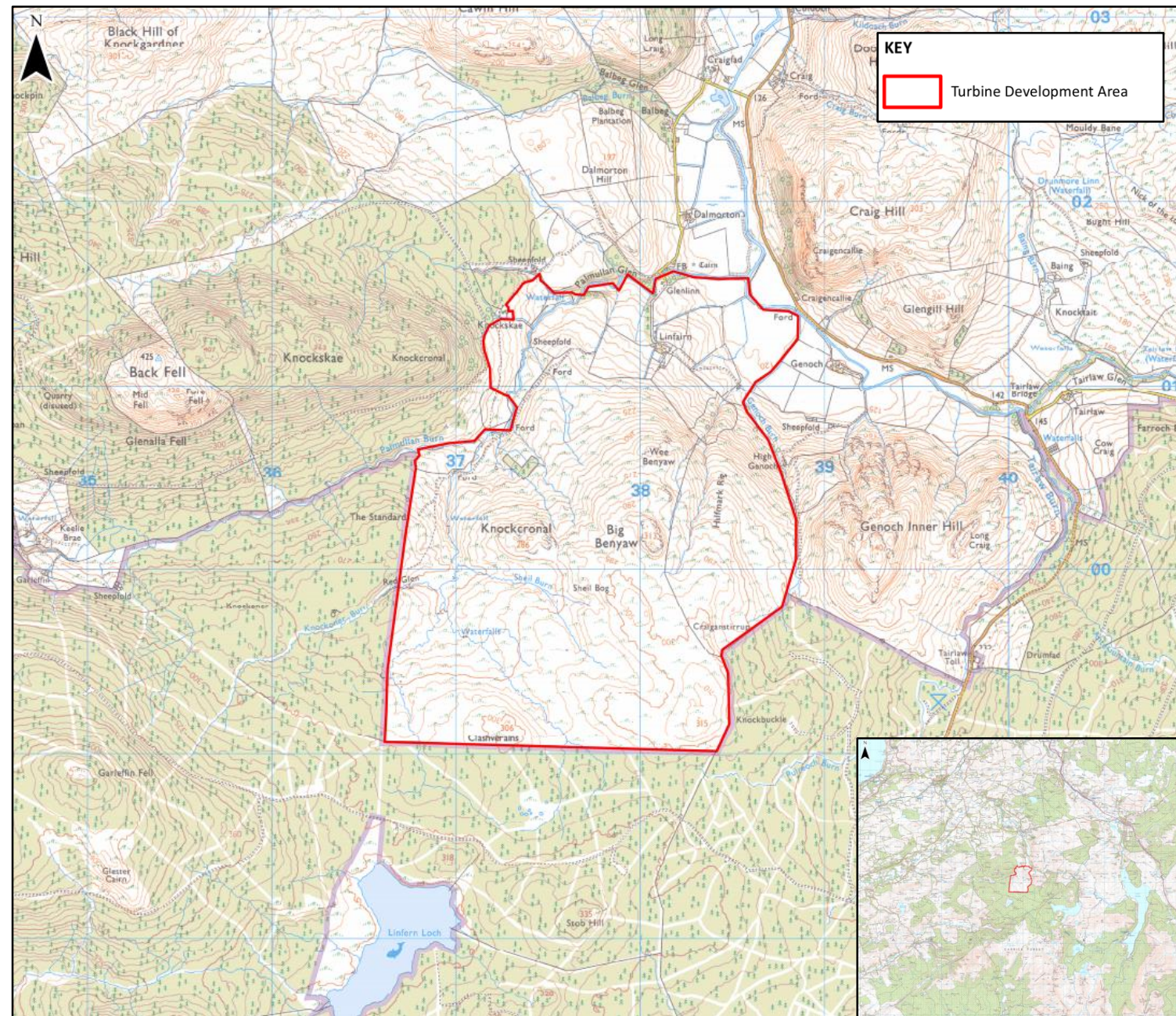
15 JANUARY 2021



About the Site

Site Location and Potential

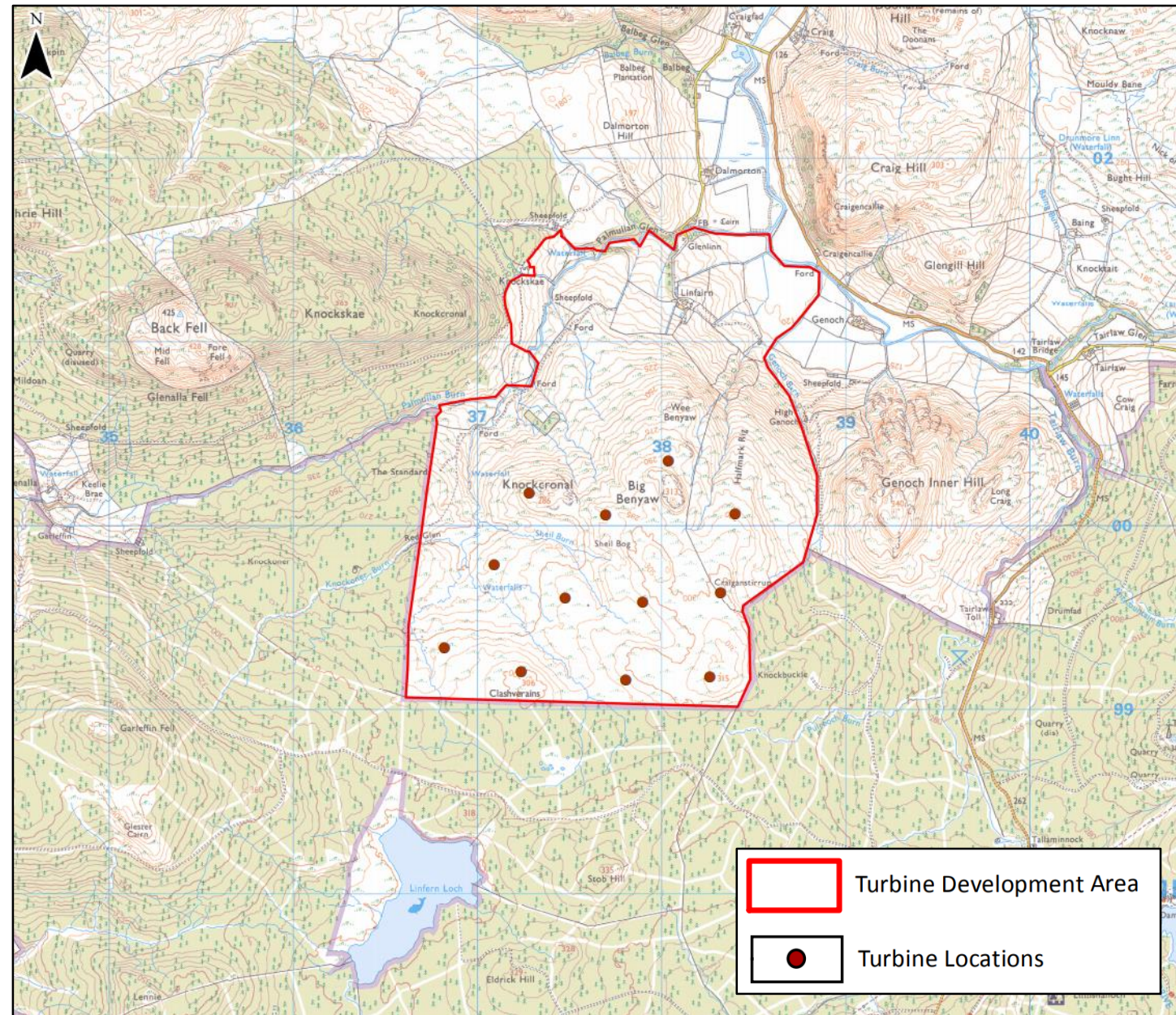
- A maximum of 12 wind turbines
- Considering up to 200 metres tip height
- Project size to be determined as studies are completed and consultation feedback received
- The site was previously developed as part of the Linfairn Wind Farm by Willowind Energy
- This is a new and separate application with no involvement from Willowind Energy



About the Site

Layout Design

- The project team are continuing to refine the design of the wind farm based on the findings of ongoing landscape and visual, noise, cultural heritage and other environmental assessments
- The proposed scoping layout for 12 turbines is shown on the right
- Turbine numbers, tip heights and locations are still to be fixed
- The layout will be finalised following community consultations



Licence number: 0100031673

Next Steps

- Ongoing site studies to arrive at the best layout for the site
- Launch of project website
- Online exhibition and interactive consultation in Q1/2 2021
- Application submission expected Q3 2021
- If consented, both a community benefit fund and investment opportunity will be made available for this project
- Throughout the development of the project we will continue to follow Scottish Government advice in relation to Covid-19



Your comments and feedback help inform the final wind farm design.

Statkraft UK @StatkraftUK · Nov 22, 2019
A genuine thank you to all who came to our events this week to talk Slickly Wind Farm. We value your time and feedback. statkraft.co.uk/slickly #Caithness #renewables #windpower

Specialist Sessions
We will be able to discuss all aspects of the project throughout the exhibition. We have arranged for independent experts to be available at the following sessions:

Shared Ownership, with Local Energy Scotland:
Drop in between 11am - 12pm, Thursday 21 November, Edinlilie Community Hall

Broadband, with MonsterNet:
Drop in between 2pm - 4pm, Friday 22 November, Rafford Village Hall

Ecology Workshop with Avian Ecology:
1 one hour session to be our work towards delivering a diversity gain.

Artfield Forest Project Timeline
Stage 2: Pre-Planning (6 - 12 months)
We request the view of the Scottish Government and Dumfries & Galloway Council on the level of study required (known as 'Scoping'). Scoping is sent

Statkraft UK @StatkraftUK · Nov 12, 2019
We're in #Caithness next week to discuss our proposal for Slickly Wind Farm, we hope to see you there! #Renewables statkraft.co.uk/media/news/2019-11-12

Consultation Events

Lyth Village Hall, Lyth, Caithness KW1 4UD
Tuesday 19th November 2019, 10am to 2pm

Auckengill Village Hall, St Clare Hall, Auckengill, Caithness KW1 4XP

Proposed Wind Farm Exhibition
We would like to open an on-site exhibition at a wind farm or other site related to the project. We are looking for a site to host an exhibition at the site.

A collage of images related to the project. It includes a wind turbine, a map of the project area, and people at an exhibition. The text is overlaid on the images.

The Knockcronal Team

Tom Walker

tom.walker@statkraft.com

John Wallace

john.wallace@statkraft.com

www.knockcronal.co.uk



statkraft.co.uk

