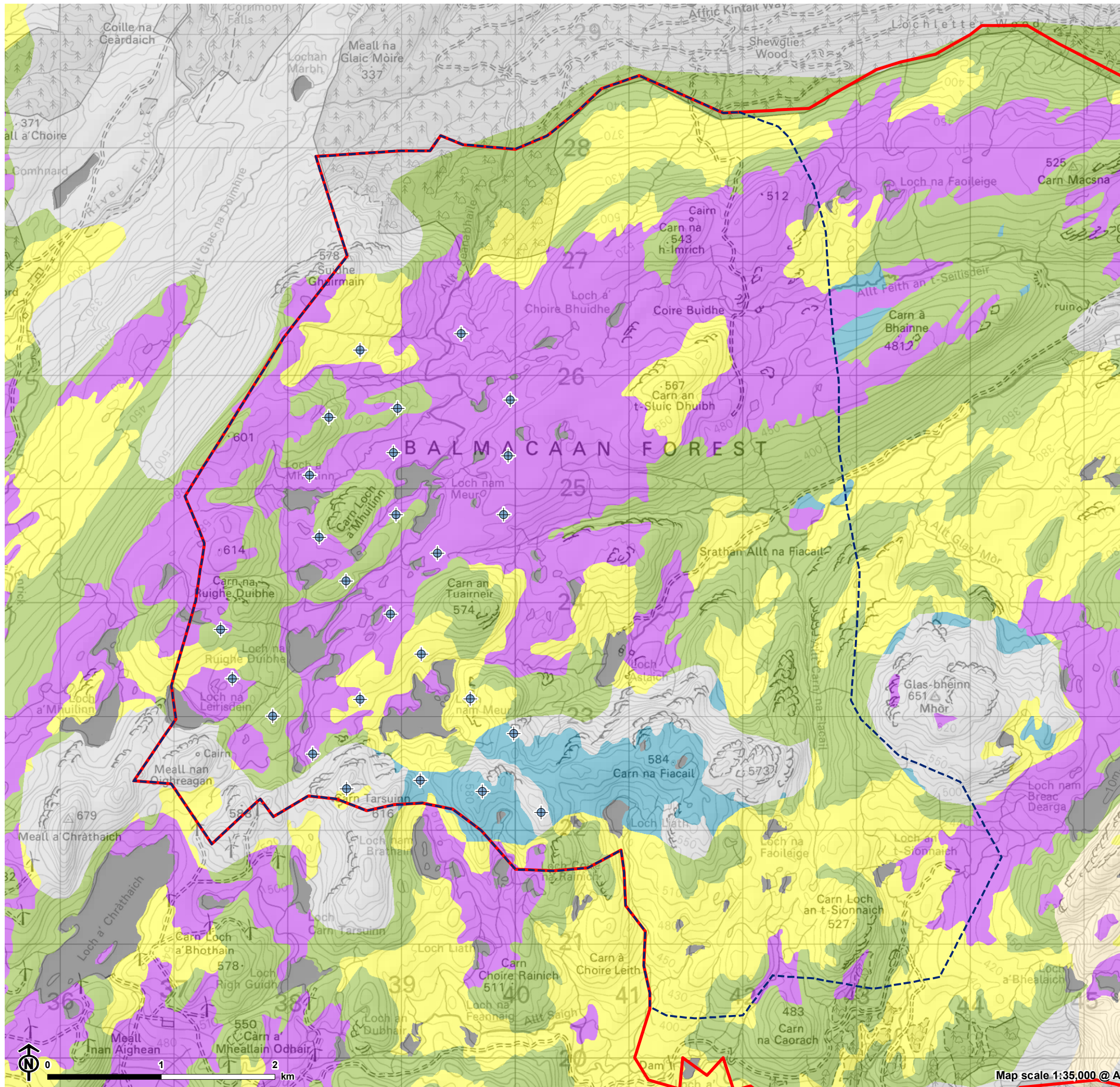


Figure 6.3: SNH Carbon and Peatland Map 2016



- Turbine
- Site boundary
- Developable area

SNH Peat and Carbon Rich Soil (2016)

- CLASS 1: Nationally important carbon-rich soils, deep peat and priority peatland habitat
- CLASS 2: Nationally important carbon-rich soils, deep peat and priority peatland habitat
- CLASS 3: Dominant vegetation cover is not priority peatland habitat but associated with wet and acidic type
- CLASS 4: Area unlikely to be associated with peatland habitats or wet and acidic type
- CLASS 5: Soil information takes precedence over vegetation data. No peatland habitat
- Mineral Soil: Peatland habitats are not typically found on such soils
- Non Soil: Indicative soil - No soil. Indicative vegetation - Not applicable.