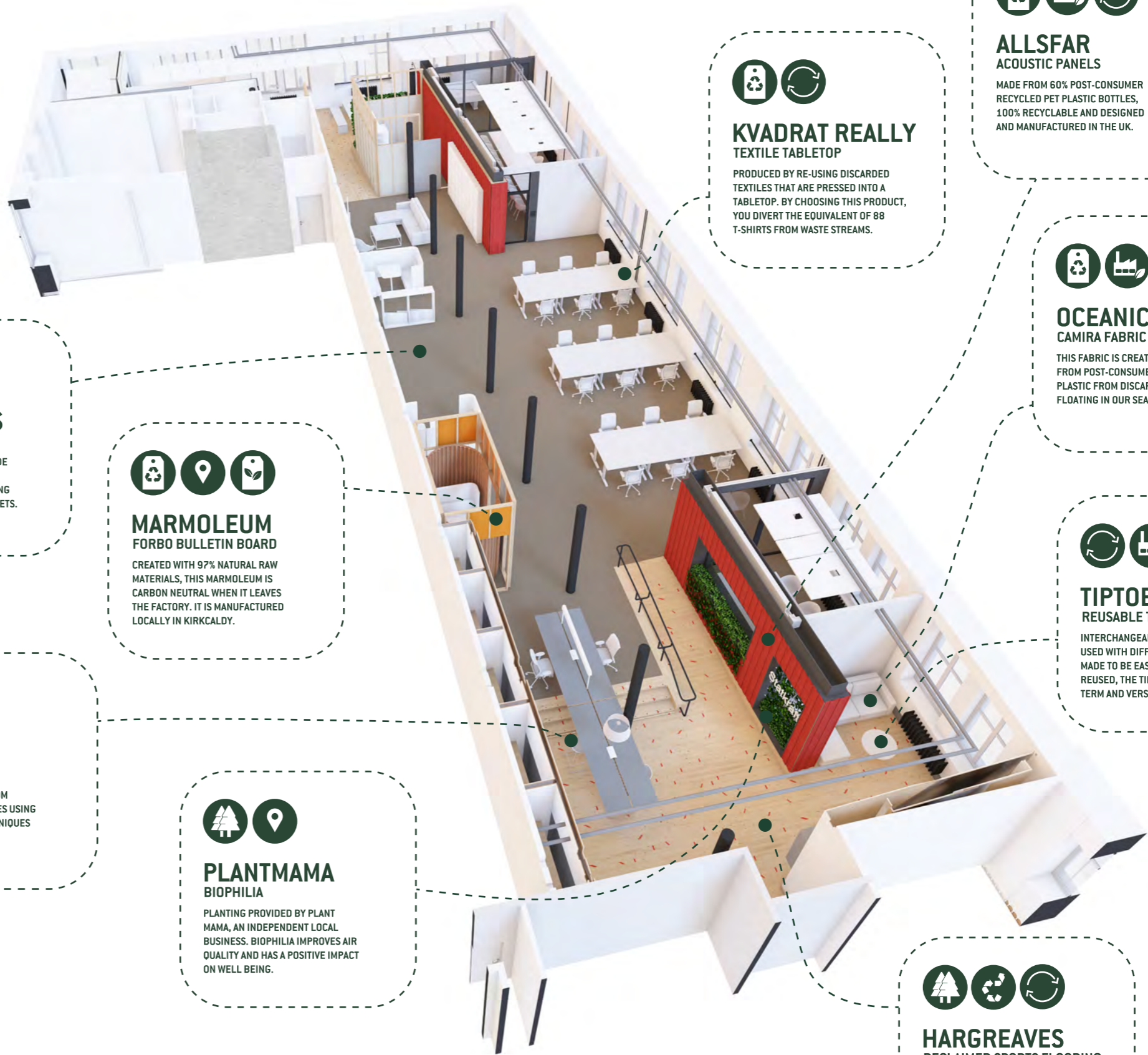


STATKRAFT GLASGOW SUSTAINABILITY TRACKER



EDGE CARPETS
CARPET TILES

THE YARN AND BACKING ARE MADE EXCLUSIVELY OF RECYCLED AND RECYCLABLE MATERIAL INCLUDING PLASTIC BOTTLES AND FISHING NETS.

MARMOLEUM
FORBO BULLETIN BOARD

CREATED WITH 97% NATURAL RAW MATERIALS, THIS MARMOLEUM IS CARBON NEUTRAL WHEN IT LEAVES THE FACTORY. IT IS MANUFACTURED LOCALLY IN KIRKCALDY.

DEVORM
PET FELT STOOL

THE SEAT PAD IS MADE FROM RECYCLED PLASTIC BOTTLES USING SMART 3D PRESSING TECHNIQUES AND IS RECYCLABLE.

PLANTMAMA
BIOPHILIA

PLANTING PROVIDED BY PLANT MAMA, AN INDEPENDENT LOCAL BUSINESS. BIOPHILIA IMPROVES AIR QUALITY AND HAS A POSITIVE IMPACT ON WELL BEING.

KVADRAT REALLY
TEXTILE TABLETOP

PRODUCED BY RE-USING DISCARDED TEXTILES THAT ARE PRESSED INTO A TABLETOP. BY CHOOSING THIS PRODUCT, YOU DIVERT THE EQUIVALENT OF 88 T-SHIRTS FROM WASTE STREAMS.

ALLSFAR
ACOUSTIC PANELS

MADE FROM 60% POST-CONSUMER RECYCLED PET PLASTIC BOTTLES, 100% RECYCLABLE AND DESIGNED AND MANUFACTURED IN THE UK.

OCEANIC
CAMIRA FABRIC

THIS FABRIC IS CREATED ENTIRELY FROM POST-CONSUMER RECYCLED PLASTIC FROM DISCARDED DEBRIS FLOATING IN OUR SEAS.

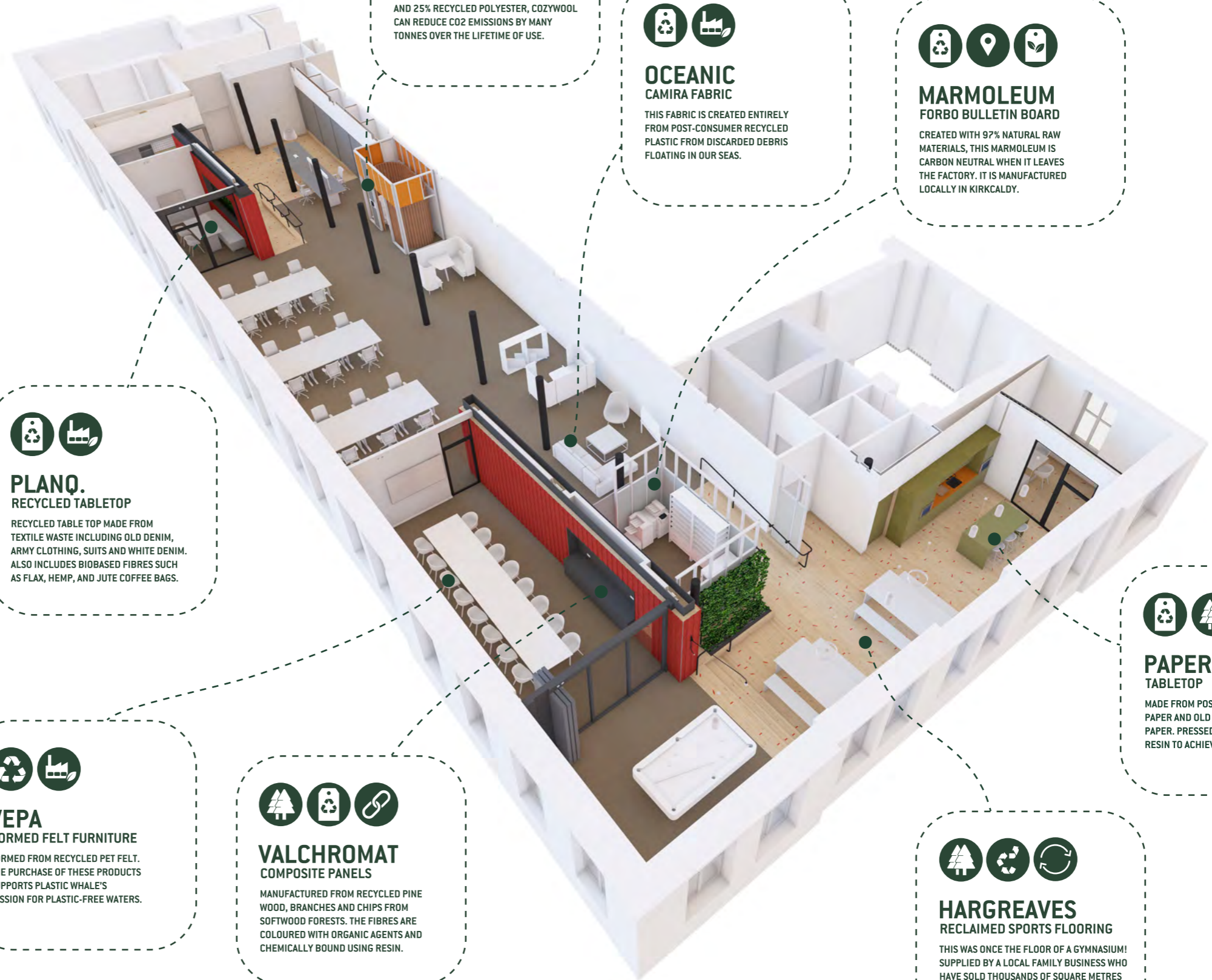
TIPTOE
REUSABLE TABLE LEG

INTERCHANGEABLE LEGS CAN BE USED WITH DIFFERENT TABLE TOPS. MADE TO BE EASILY DISMANTLED AND REUSED, THE TIP-TOE LEG IS A LONG TERM AND VERSATILE SOLUTION.

HARGREAVES
RECLAIMED SPORTS FLOORING

THIS WAS ONCE THE FLOOR OF A GYMNASIUM! SUPPLIED BY A LOCAL FAMILY BUSINESS WHO HAVE SOLD THOUSANDS OF SQUARE METRES OF RECLAIMED WOOD THROUGHOUT THE UK.

STATKRAFT GLASGOW SUSTAINABILITY TRACKER



**THERMAFLEECE
COZYWOOL**
MADE FROM 75% BRITISH SHEEP'S WOOL AND 25% RECYCLED POLYESTER, COZYWOOL CAN REDUCE CO2 EMISSIONS BY MANY TONNES OVER THE LIFETIME OF USE.

**OCEANIC
CAMIRA FABRIC**
THIS FABRIC IS CREATED ENTIRELY FROM POST-CONSUMER RECYCLED PLASTIC FROM DISCARDED DEBRIS FLOATING IN OUR SEAS.

**MARMOLEUM
FORBO BULLETIN BOARD**
CREATED WITH 97% NATURAL RAW MATERIALS, THIS MARMOLEUM IS CARBON NEUTRAL WHEN IT LEAVES THE FACTORY. IT IS MANUFACTURED LOCALLY IN KIRKCALDY.

**PLANQ.
RECYCLED TABLETOP**
RECYCLED TABLE TOP MADE FROM TEXTILE WASTE INCLUDING OLD DENIM, ARMY CLOTHING, SUITS AND WHITE DENIM. ALSO INCLUDES BIOBASED FIBRES SUCH AS FLAX, HEMP, AND JUTE COFFEE BAGS.

**PAPERSTONE
TABLETOP**
MADE FROM POST-CONSUMER RECYCLED PAPER AND OLD CARDBOARD CONTAINER PAPER. PRESSED TOGETHER WITH A CASHEW RESIN TO ACHIEVE A STONE-LIKE TEXTURE.

**VEPA
FORMED FELT FURNITURE**
FORMED FROM RECYCLED PET FELT. THE PURCHASE OF THESE PRODUCTS SUPPORTS PLASTIC WHALE'S MISSION FOR PLASTIC-FREE WATERS.

**VALCHROMAT
COMPOSITE PANELS**
MANUFACTURED FROM RECYCLED PINE WOOD, BRANCHES AND CHIPS FROM SOFTWOOD FORESTS. THE FIBRES ARE COLOURED WITH ORGANIC AGENTS AND CHEMICALLY BOUND USING RESIN.

**HARGREAVES
RECLAIMED SPORTS FLOORING**
THIS WAS ONCE THE FLOOR OF A GYMNASIUM! SUPPLIED BY A LOCAL FAMILY BUSINESS WHO HAVE SOLD THOUSANDS OF SQUARE METRES OF RECLAIMED WOOD THROUGHOUT THE UK.

STATKRAFT GLASGOW FINISHES

acoustic panels

partition/screens

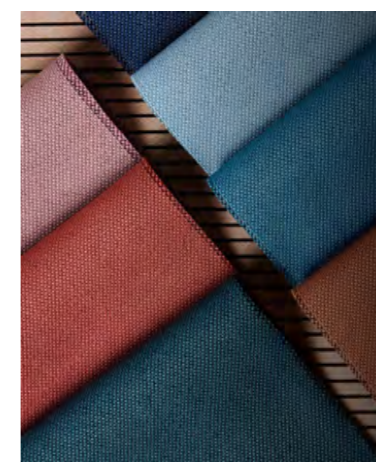
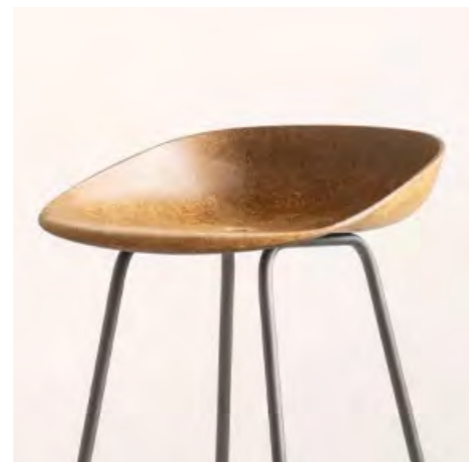
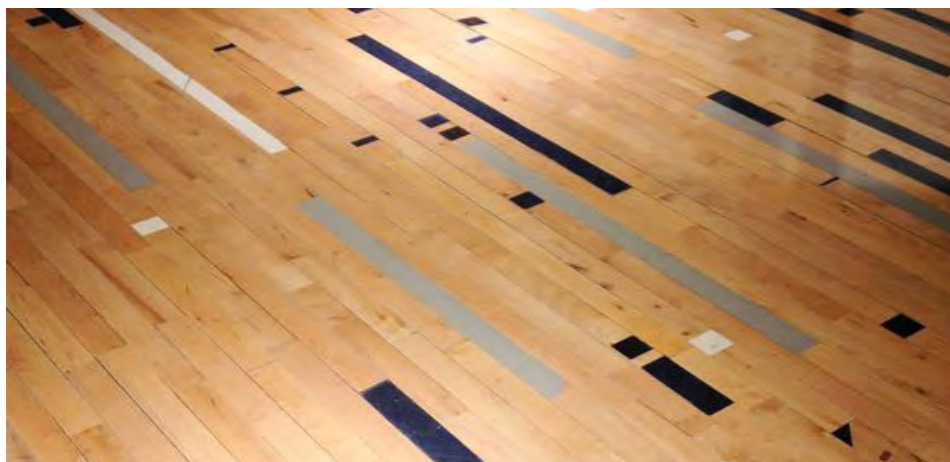
flooring



acoustic wall cladding	
board on board format	
recycled felt panels	



partition screens	
stud frame assembly	
wood wool acoustic panels	



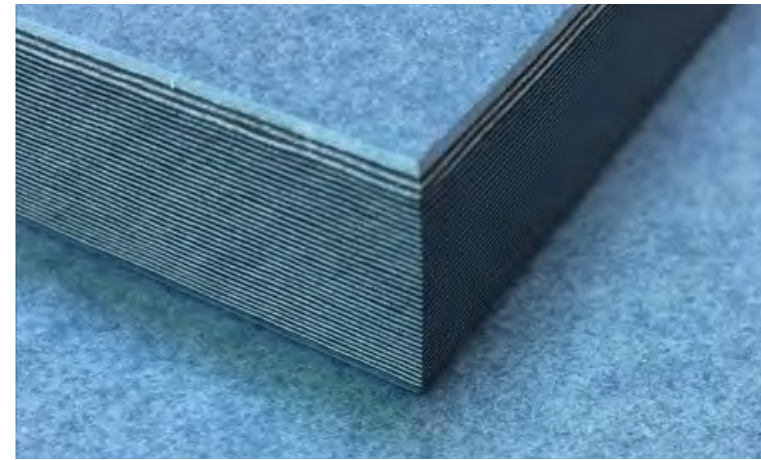
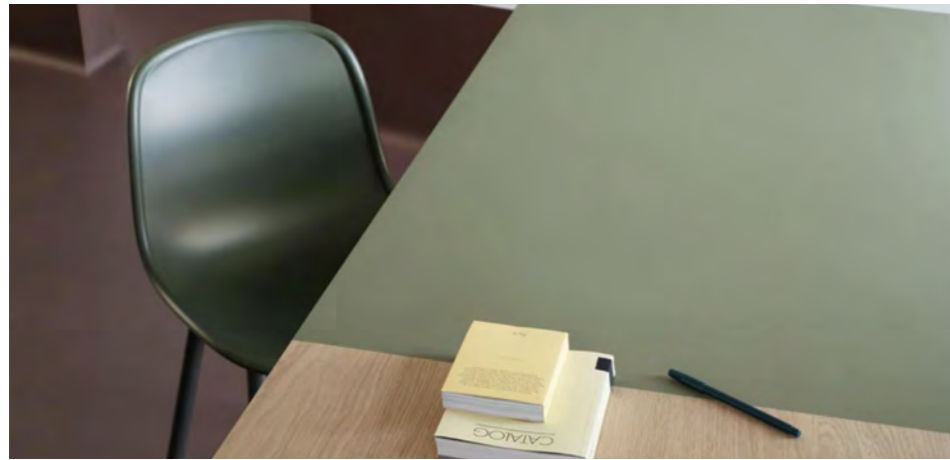
reclaimed flooring	
hemp & bioresin stools	
recycled plastic upholstery	







STATKRAFT GLASGOW FINISHES

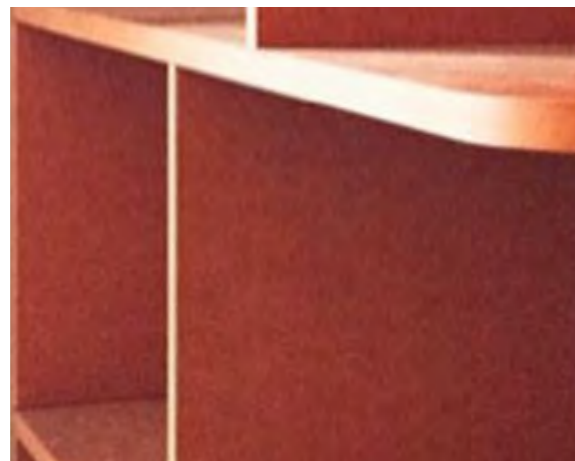
surfaces







substrates

furniture







furniture linoleum	 
recycled fabric table tops	 
paperstone worktops	 



pine furniture board	
valchromat panels	 
reclaimed timber	  



furniture clamp legs	
recycled steel + felt chair	
natural wool fabric	 

STATKRAFT GLASGOW FINISHES

ceiling

planting

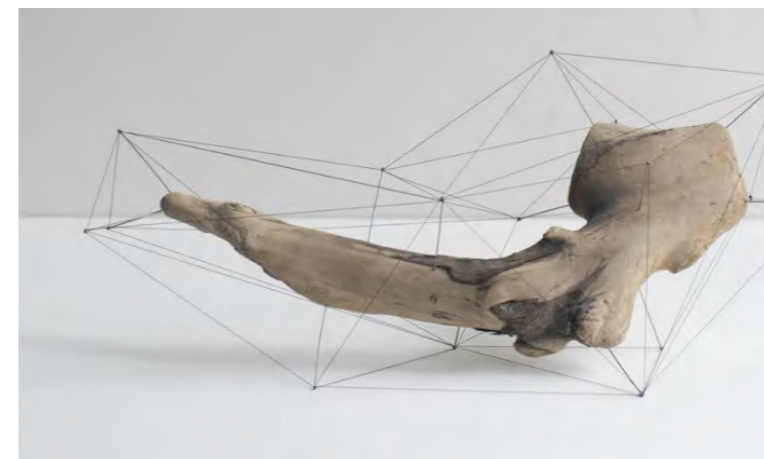
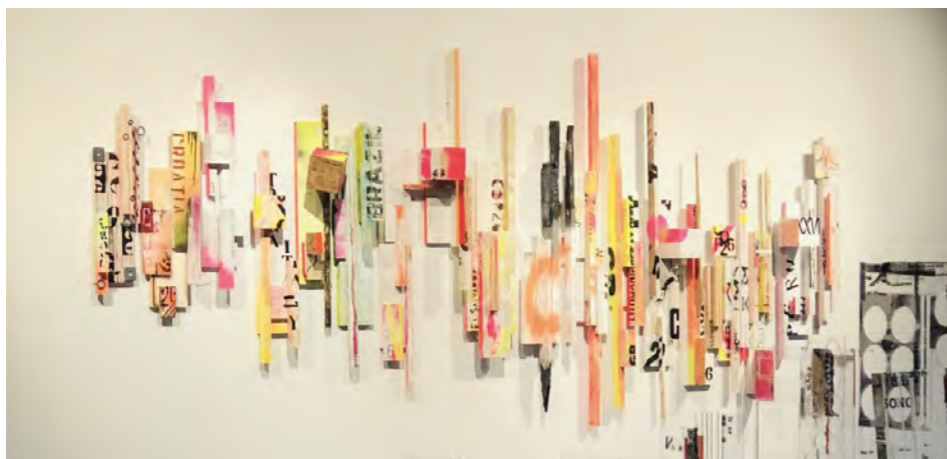
art



acoustic ceiling rafts	
recycled existing lighting	
cable basket mesh cover	



trailing plants	
plant shelf frame	
wire trellis	



COP 26 art	
conduit routes	
natural objects	

STATKRAFT GLASGOW LOOK & FEEL



